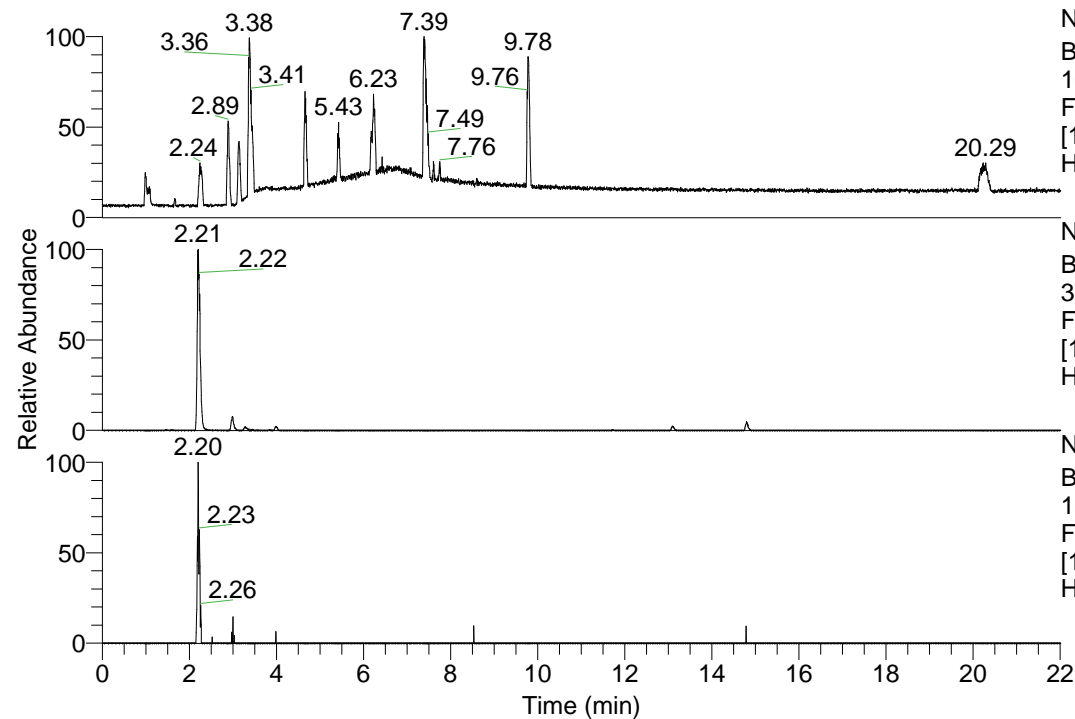


RT: 0.00 - 22.01



NL: 1.13E8
 Base Peak m/z=
 100.00000-1500.00000 F:
 FTMS + p ESI Full ms
 [100.00-1500.00] MS
 Hcurta_HDX

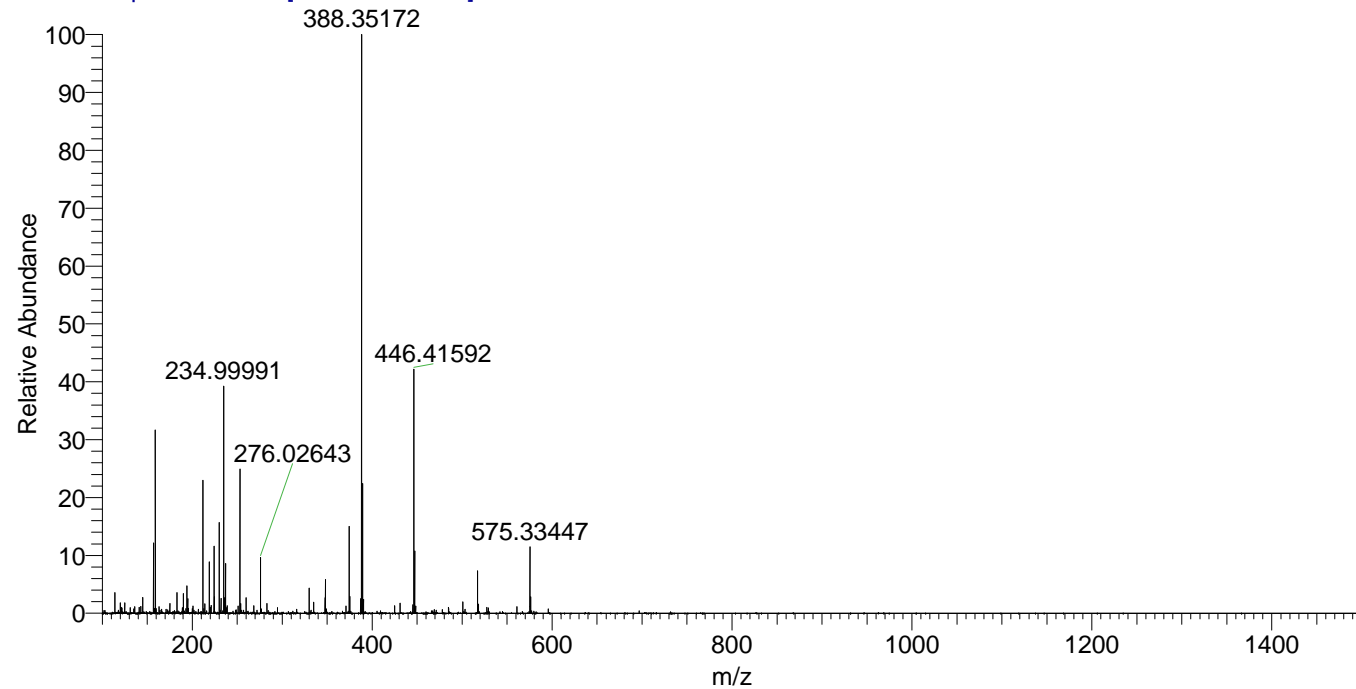
NL: 2.76E6
 Base Peak m/z=
 374.33525-374.33899 F:
 FTMS + p ESI Full ms
 [100.00-1500.00] MS
 Hcurta_HDX

NL: 5.36E4
 Base Peak m/z=
 188.17467-188.17655 F:
 FTMS + p ESI Full ms
 [100.00-1500.00] MS
 Hcurta_HDX

Hcurta_HDX#336 RT: 2.21
 T: FTMS + p ESI Full ms [100.00-1500.00]
 m/z= 374.00000-375.00000

m/z	Intensity	Relative	Delta (ppm)	Composition
374.33621	2758314.8	100.00	-0.94	C ₁₉ H ₂₈ ² H ₈ O ₂ N ₅
			3.19	C ₁₉ H ₂₆ ² H ₉ O ₂ N ₅

Hcurta_HDX #336 RT: 2.21 AV: 1 NL: 1.84E7
 T: FTMS + p ESI Full ms [100.00-1500.00]



Hcurta_HDX #336 RT: 2.21 AV: 1 NL: 2.76E6
 T: FTMS + p ESI Full ms [100.00-1500.00]

