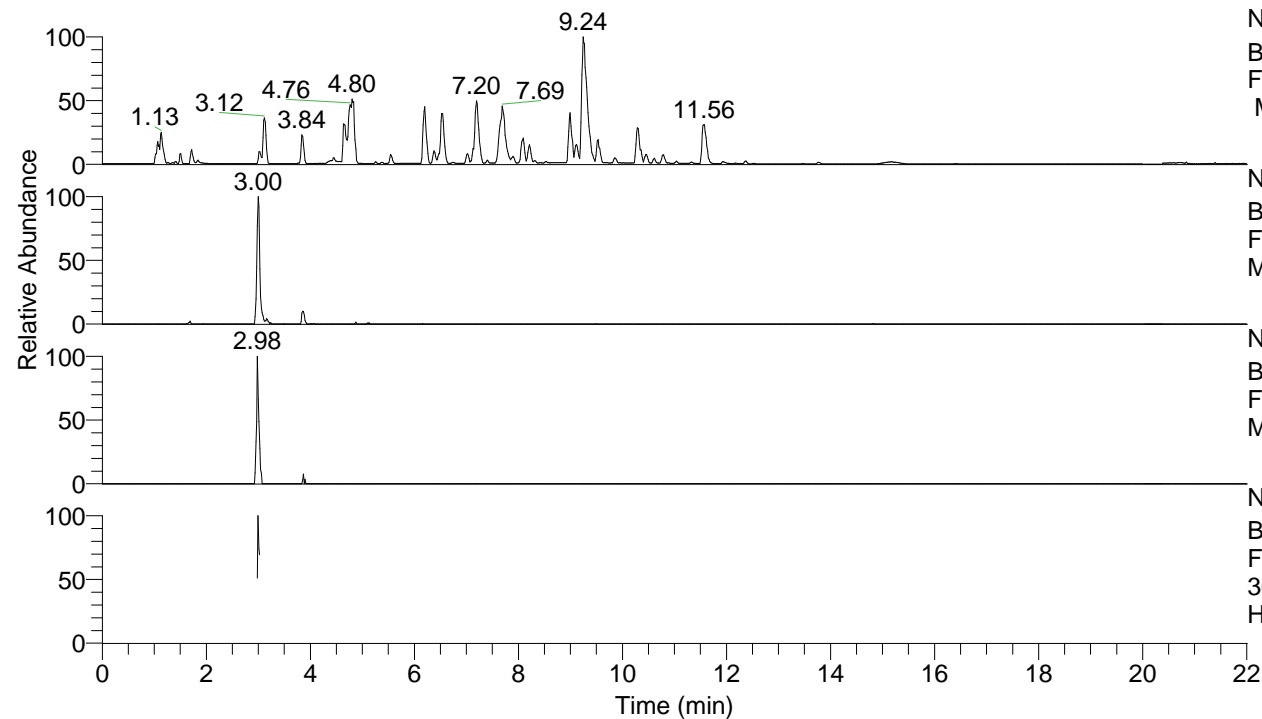


RT: 0.00 - 22.01



NL: 8.52E7  
 Base Peak m/z= 100.00000-1500.00000  
 F: FTMS + p ESI Full ms [100.00-1500.00]  
 MS Hcurta

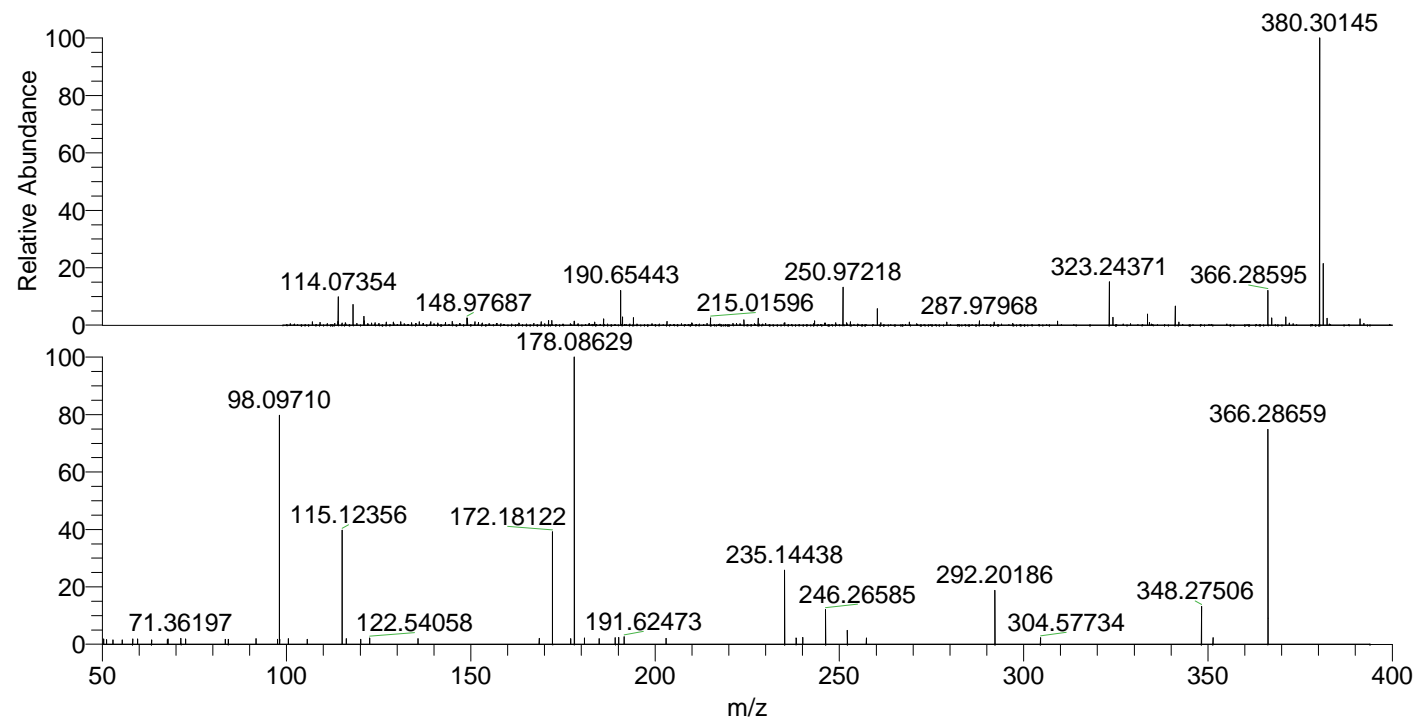
NL: 4.95E5  
 Base Peak m/z= 366.28507-366.28873 F:  
 FTMS + p ESI Full ms [100.00-1500.00]  
 MS Hcurta

NL: 6.49E4  
 Base Peak m/z= 183.64644-183.64828 F:  
 FTMS + p ESI Full ms [100.00-1500.00]  
 MS Hcurta

NL: 6.23E4  
 Base Peak m/z= 50.00000-1500.00000 F:  
 FTMS + p ESI d Full ms2  
 366.29@hcd35.00 [50.00-390.00] MS  
 Hcurta

Hcurta#1193-1212 RT: 2.98-3.03 AV: 4  
 F: FTMS + p ESI d Full ms2 366.29 ...  
 m/z= 50.00000-1000.00000

m/z	Intensity	Relative
50.41470	813.6	1.86
51.13279	714.7	1.64
52.88628	648.3	1.48
55.39046	667.2	1.53
58.25289	816.6	1.87
59.61611	790.0	1.81
63.37594	658.1	1.51
67.67520	708.9	1.62
67.83804	799.0	1.83
71.36197	924.3	2.12
72.65459	799.1	1.83
83.41296	758.5	1.74
84.21885	780.6	1.79
91.75788	890.2	2.04
97.53345	790.9	1.81
98.09710	35454.4	81.17
98.17350	762.6	1.75
100.47098	846.9	1.94
105.63479	759.9	1.74
115.12356	17403.6	39.84
116.18829	880.2	2.02
120.15049	741.3	1.70
122.54058	929.0	2.13
135.64662	876.3	2.01
168.55973	888.0	2.03
172.18122	17305.7	39.62
177.10364	869.0	1.99
178.08629	43680.8	100.00
178.09953	1310.2	3.00
180.85331	932.1	2.13
184.86245	876.9	2.01
189.20564	1040.5	2.38
190.15883	1034.2	2.37
191.62473	1139.8	2.61
202.97438	891.3	2.04
235.14438	11316.4	25.91
238.28692	958.4	2.19
240.08423	1063.8	2.44
246.26585	5312.8	12.16
252.16936	2098.3	4.80
257.33108	953.8	2.18
292.20186	8342.9	19.10
304.57734	989.6	2.27
348.27506	5835.4	13.36
351.38917	991.9	2.27
366.28659	32929.8	75.39



NL: 4.03E6  
 Hcurta#1201 RT: 3.00  
 AV: 1 T: FTMS + p ESI  
 Full lock ms  
 [100.00-1500.00]

NL: 4.37E4  
 Hcurta#1147-1277 RT:  
 2.98-3.03 AV: 4 F: FTMS  
 + p ESI d Full ms2  
 366.29@hcd35.00  
 [50.00-390.00]