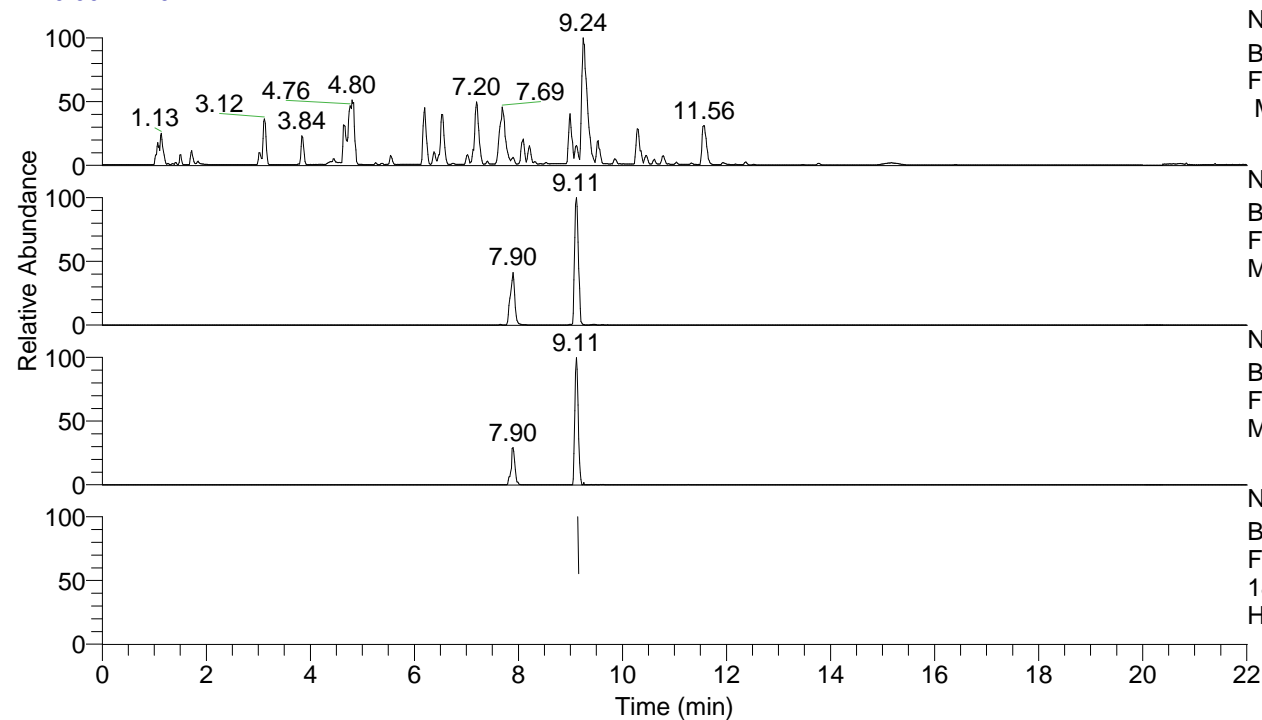


RT: 0.00 - 22.01



NL: 8.52E7
 Base Peak m/z= 100.00000-1500.00000
 F: FTMS + p ESI Full ms [100.00-1500.00]
 MS Hcurta

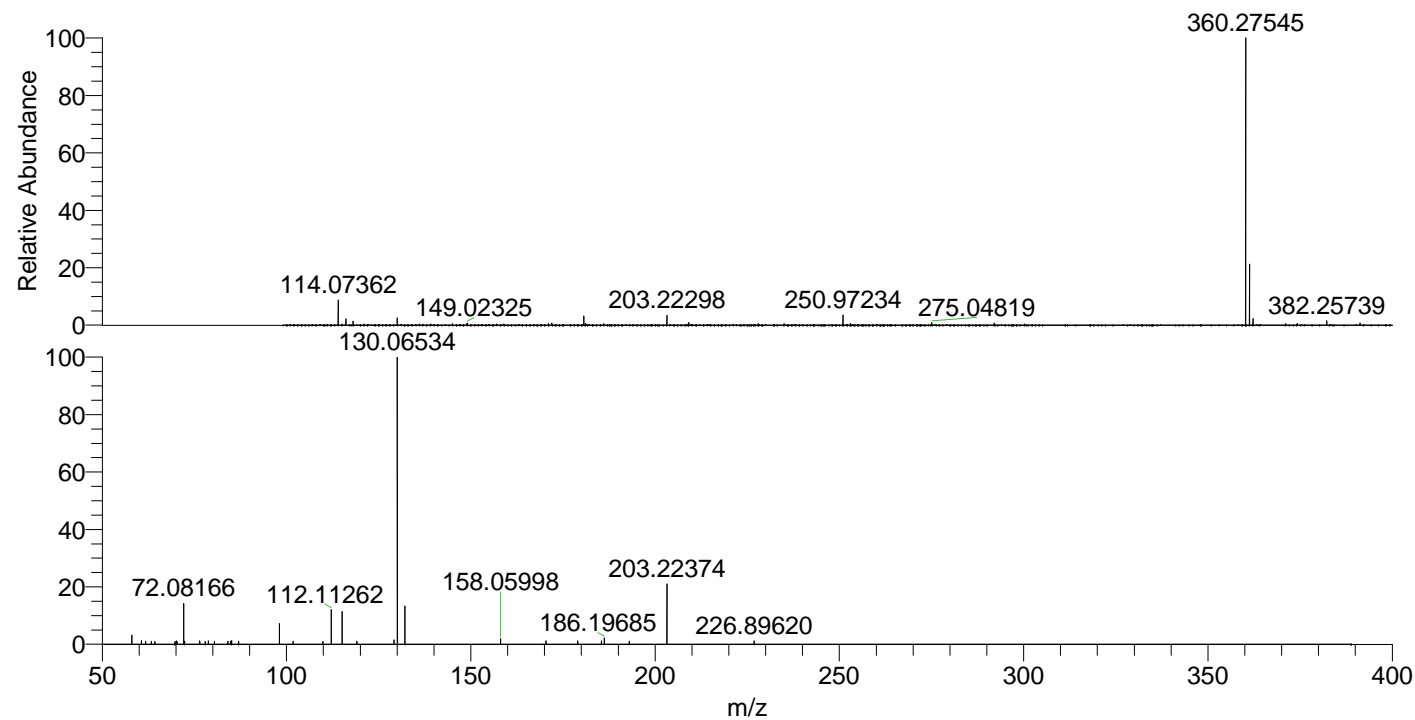
NL: 1.33E7
 Base Peak m/z= 360.27454-360.27814 F:
 FTMS + p ESI Full ms [100.00-1500.00]
 MS Hcurta

NL: 4.28E5
 Base Peak m/z= 180.64118-180.64298 F:
 FTMS + p ESI Full ms [100.00-1500.00]
 MS Hcurta

NL: 1.52E5
 Base Peak m/z= 50.00000-1500.00000 F:
 FTMS + p ESI d Full ms2
 180.64@hcd35.00 [50.00-385.00] MS
 Hcurta

Hcurta#3666-3672 RT: 9.14-9.16 AV: 2
 F: FTMS + p ESI d Full ms2 180.64 ...
 m/z= 50.00000-1000.00000

m/z	Intensity	Relative
58.06602	3586.8	3.17
60.64382	1422.3	1.26
61.75362	1175.8	1.04
63.35771	1133.3	1.00
64.31033	1070.7	0.95
69.71583	1098.1	0.97
70.06579	1233.7	1.09
70.28890	997.8	0.88
72.08166	15841.2	14.02
72.32138	1165.3	1.03
76.40972	1297.8	1.15
77.96452	1000.3	0.89
78.81108	1235.0	1.09
80.46070	1151.2	1.02
84.08176	1152.5	1.02
84.81062	1222.3	1.08
85.08885	1428.0	1.26
86.99745	1180.4	1.04
98.09713	8002.9	7.08
101.82103	1231.2	1.09
109.87820	1107.6	0.98
112.11262	13363.3	11.83
115.12360	12644.8	11.19
119.11316	1223.4	1.08
129.13880	1648.3	1.46
130.05552	2193.9	1.94
130.06534	113001.3	100.00
132.14969	14683.3	12.99
158.05998	2194.3	1.94
170.39457	1387.3	1.23
179.02412	1269.5	1.12
185.42322	1352.4	1.20
186.19685	2346.5	2.08
193.00766	1269.0	1.12
203.22374	23205.0	20.54
226.89620	1269.5	1.12



NL: 1.33E7
 Hcurta#3655 RT: 9.11
 AV: 1 T: FTMS + p ESI
 Full lock ms
 [100.00-1500.00]

NL: 1.10E5
 Hcurta#3615-3728 RT:
 9.14-9.16 AV: 2 F: FTMS
 + p ESI d Full ms2
 180.64@hcd35.00
 [50.00-385.00]