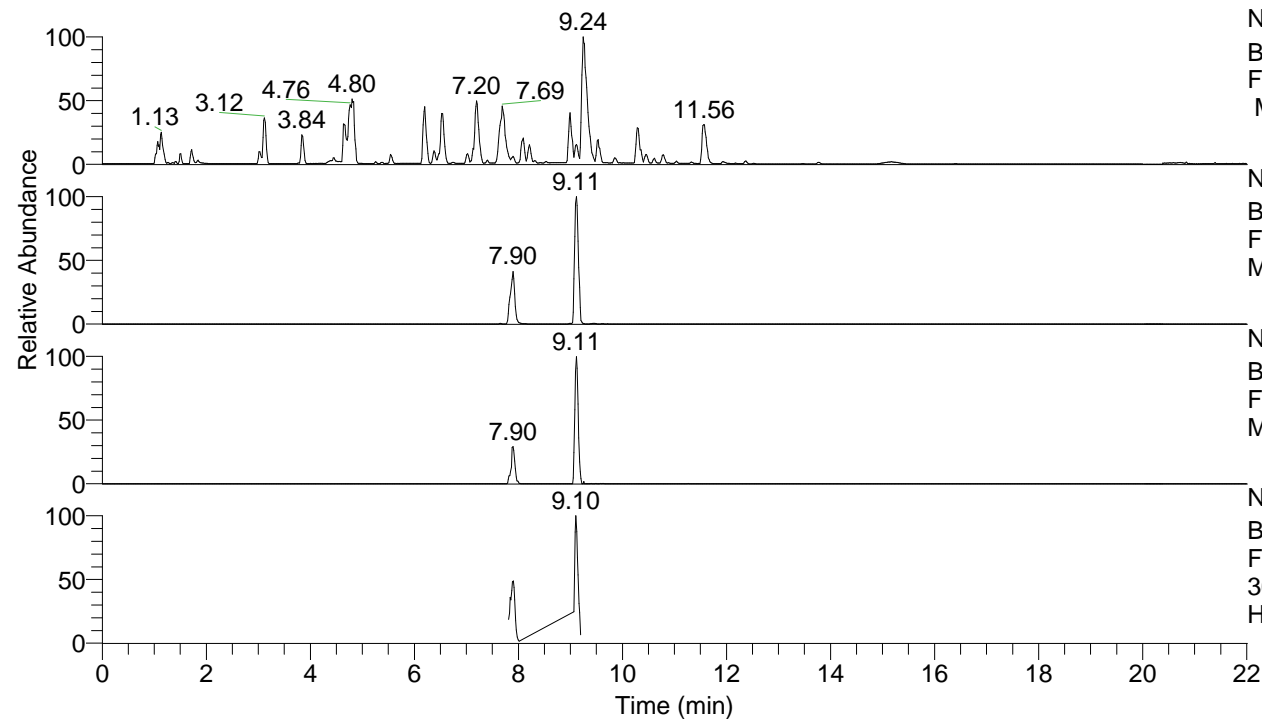


RT: 0.00 - 22.01



NL: 8.52E7  
 Base Peak m/z= 100.00000-1500.00000  
 F: FTMS + p ESI Full ms [100.00-1500.00]  
 MS Hcurta

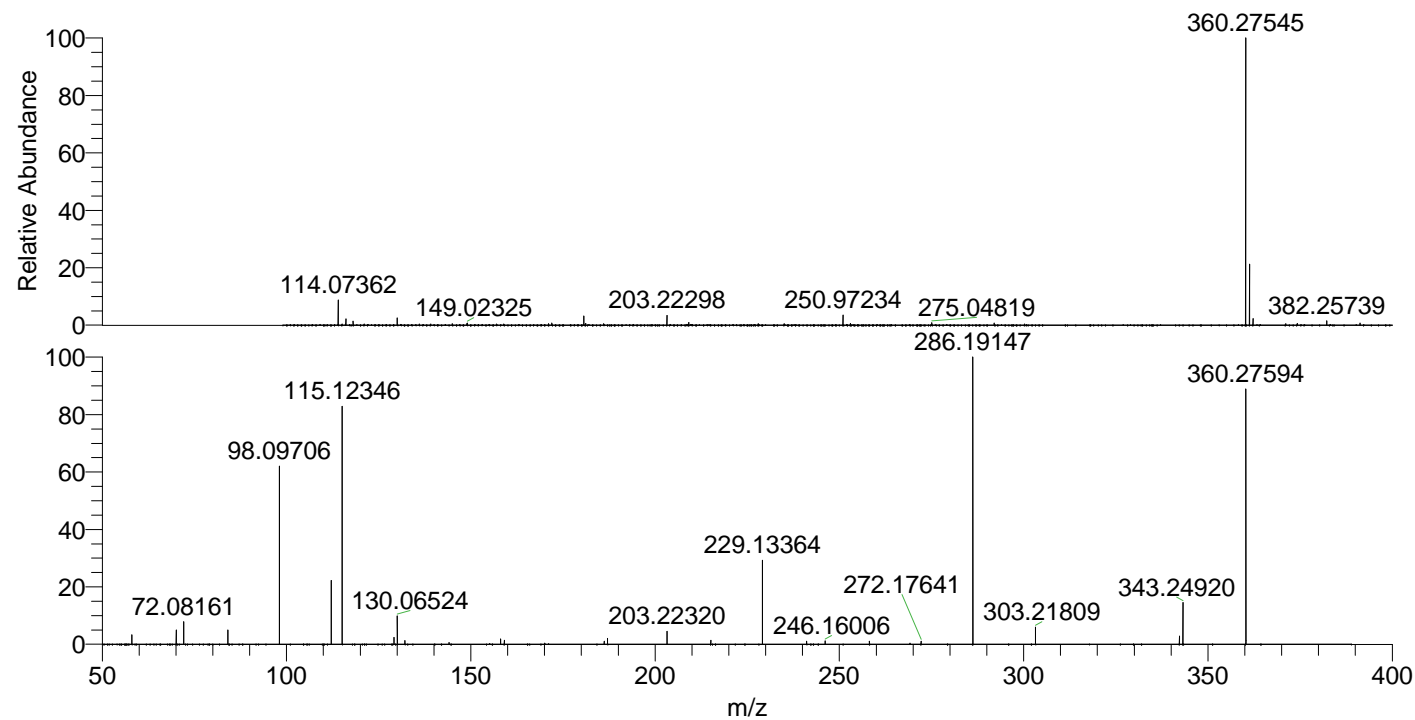
NL: 1.33E7  
 Base Peak m/z= 360.27454-360.27814 F:  
 FTMS + p ESI Full ms [100.00-1500.00]  
 MS Hcurta

NL: 4.28E5  
 Base Peak m/z= 180.64118-180.64298 F:  
 FTMS + p ESI Full ms [100.00-1500.00]  
 MS Hcurta

NL: 1.92E6  
 Base Peak m/z= 50.00000-1500.00000 F:  
 FTMS + p ESI d Full ms2  
 360.28@hcd35.00 [50.00-385.00] MS  
 Hcurta

Hcurta#3636-3686 RT: 9.07-9.19 AV: 10  
 F: FTMS + p ESI d Full ms2 360.28 ...  
 m/z= 50.00000-1000.00000

m/z	Intensity	Relative
58.06596	31609.7	3.24
70.06593	48486.0	4.97
72.08161	77188.2	7.91
84.08150	49169.1	5.04
98.09706	613163.1	62.87
112.11259	216944.8	22.24
115.12346	811302.6	83.19
129.13890	23534.5	2.41
130.06524	98907.9	10.14
132.14978	12882.8	1.32
144.08081	5580.6	0.57
158.06015	17735.2	1.82
159.09191	13209.4	1.35
186.19664	10428.6	1.07
187.08690	20403.1	2.09
203.22320	42993.4	4.41
215.11815	13832.6	1.42
229.13365	290922.0	29.83
241.13345	10223.0	1.05
246.16006	11673.0	1.20
258.16047	10016.4	1.03
272.17641	10094.1	1.04
286.19148	975269.4	100.00
303.21809	59500.7	6.10
342.26614	27833.1	2.85
343.24920	144678.8	14.83
360.27595	872696.9	89.48



NL: 1.33E7  
 Hcurta#3655 RT: 9.11  
 AV: 1 T: FTMS + p ESI  
 Full lock ms  
 [100.00-1500.00]

NL: 1.07E6  
 Hcurta#3632-3685 RT:  
 9.07-9.18 AV: 9 F: FTMS  
 + p ESI d Full ms2  
 360.28@hcd35.00  
 [50.00-385.00]