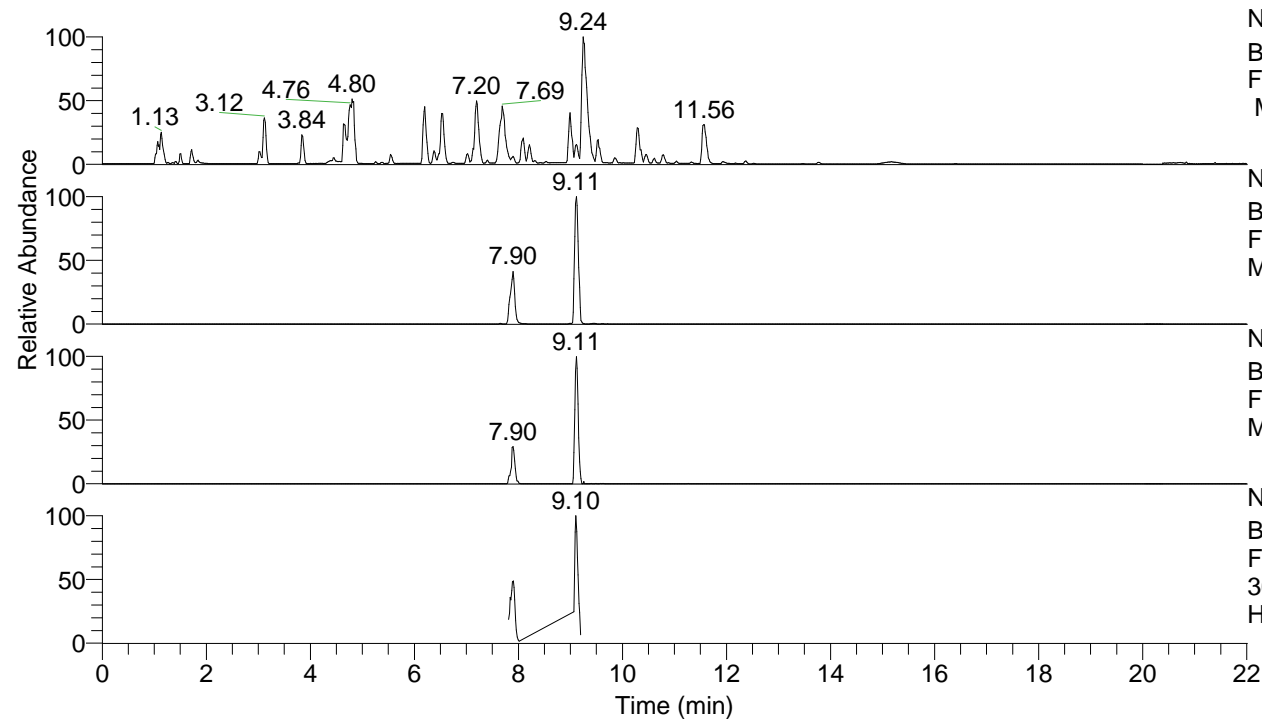


RT: 0.00 - 22.01



NL: 8.52E7  
 Base Peak m/z= 100.00000-1500.00000  
 F: FTMS + p ESI Full ms [100.00-1500.00]  
 MS Hcurta

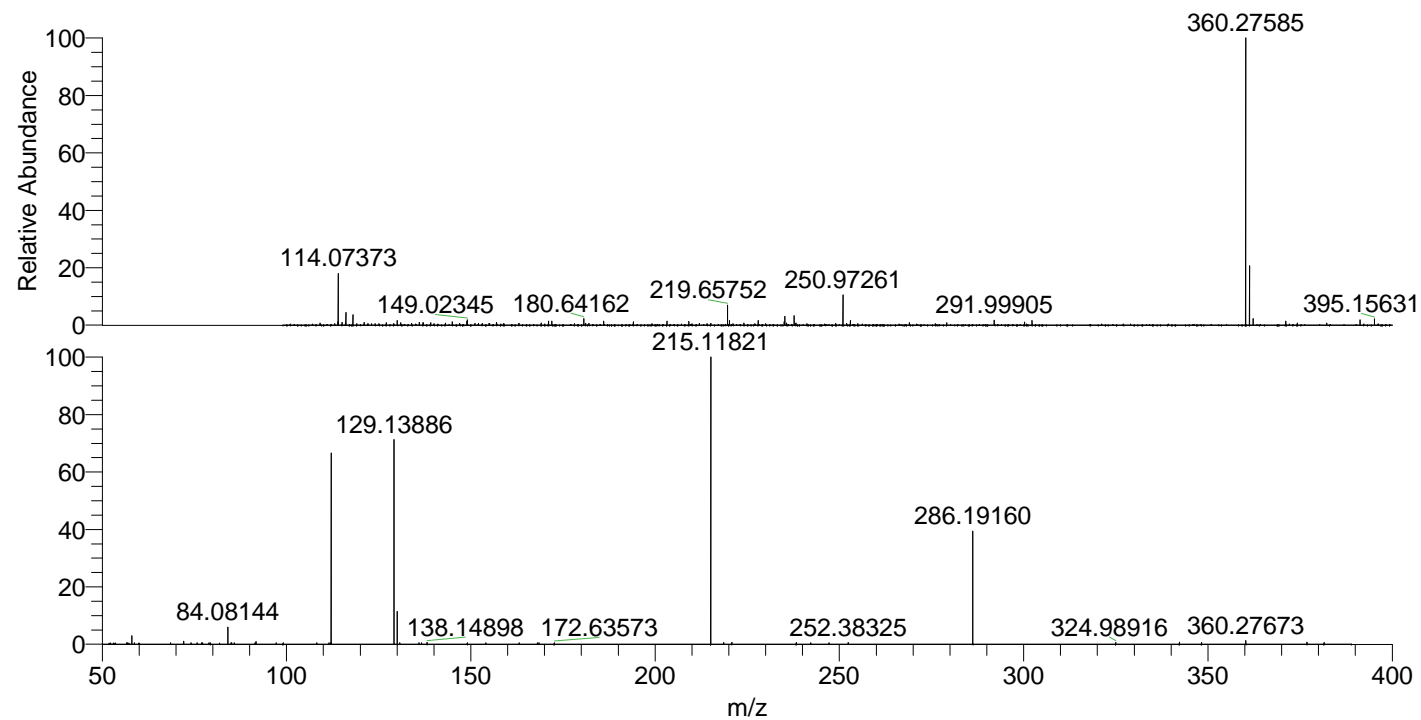
NL: 1.33E7  
 Base Peak m/z= 360.27454-360.27814 F:  
 FTMS + p ESI Full ms [100.00-1500.00]  
 MS Hcurta

NL: 4.28E5  
 Base Peak m/z= 180.64118-180.64298 F:  
 FTMS + p ESI Full ms [100.00-1500.00]  
 MS Hcurta

NL: 1.92E6  
 Base Peak m/z= 50.00000-1500.00000 F:  
 FTMS + p ESI d Full ms2  
 360.28@hcd35.00 [50.00-385.00] MS  
 Hcurta

Hcurta#3188-3209 RT: 7.95-8.00 AV: 4  
 F: FTMS + p ESI d Full ms2 360.28 ...  
 m/z= 50.00000-1000.00000

m/z	Intensity	Relative
58.06604	5018.5	3.01
72.08164	1815.2	1.09
75.74693	913.8	0.55
84.08144	9769.1	5.87
85.81414	886.1	0.53
91.49256	888.7	0.53
91.75845	1672.9	1.00
99.07365	860.7	0.52
111.51548	868.2	0.52
112.06432	998.0	0.60
112.11253	110417.6	66.33
129.13886	120860.4	72.61
130.06565	19215.0	11.54
135.95864	894.1	0.54
136.64247	900.3	0.54
138.14898	948.6	0.57
149.08442	841.4	0.51
154.08761	852.8	0.51
163.11344	881.7	0.53
168.04021	839.1	0.50
172.63573	905.3	0.54
215.11821	166460.8	100.00
218.64258	971.2	0.58
220.83440	952.5	0.57
238.29926	965.3	0.58
252.38325	1006.0	0.60
286.19160	64553.6	38.78
324.98916	1037.2	0.62
342.27104	1249.6	0.75
348.25961	1071.6	0.64
360.27673	2182.5	1.31
376.88517	1134.2	0.68
381.52479	1056.6	0.63



NL: 5.49E6  
 Hcurta#3169 RT: 7.90  
 AV: 1 T: FTMS + p ESI  
 Full lock ms  
 [100.00-1500.00]

NL: 1.64E5  
 Hcurta#3188-3209 RT:  
 7.95-8.00 AV: 4 F: FTMS  
 + p ESI d Full ms2  
 360.28@hcd35.00  
 [50.00-385.00]