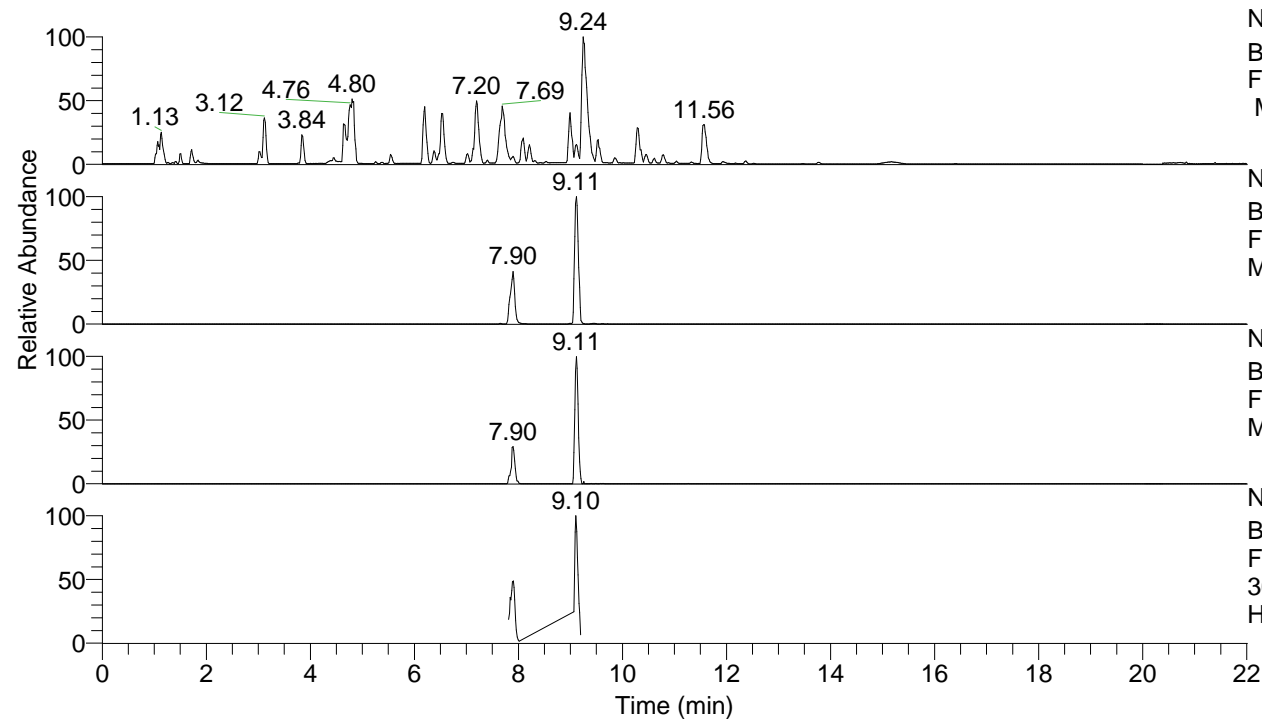


RT: 0.00 - 22.01



NL: 8.52E7
 Base Peak m/z= 100.00000-1500.00000
 F: FTMS + p ESI Full ms [100.00-1500.00]
 MS Hcurta

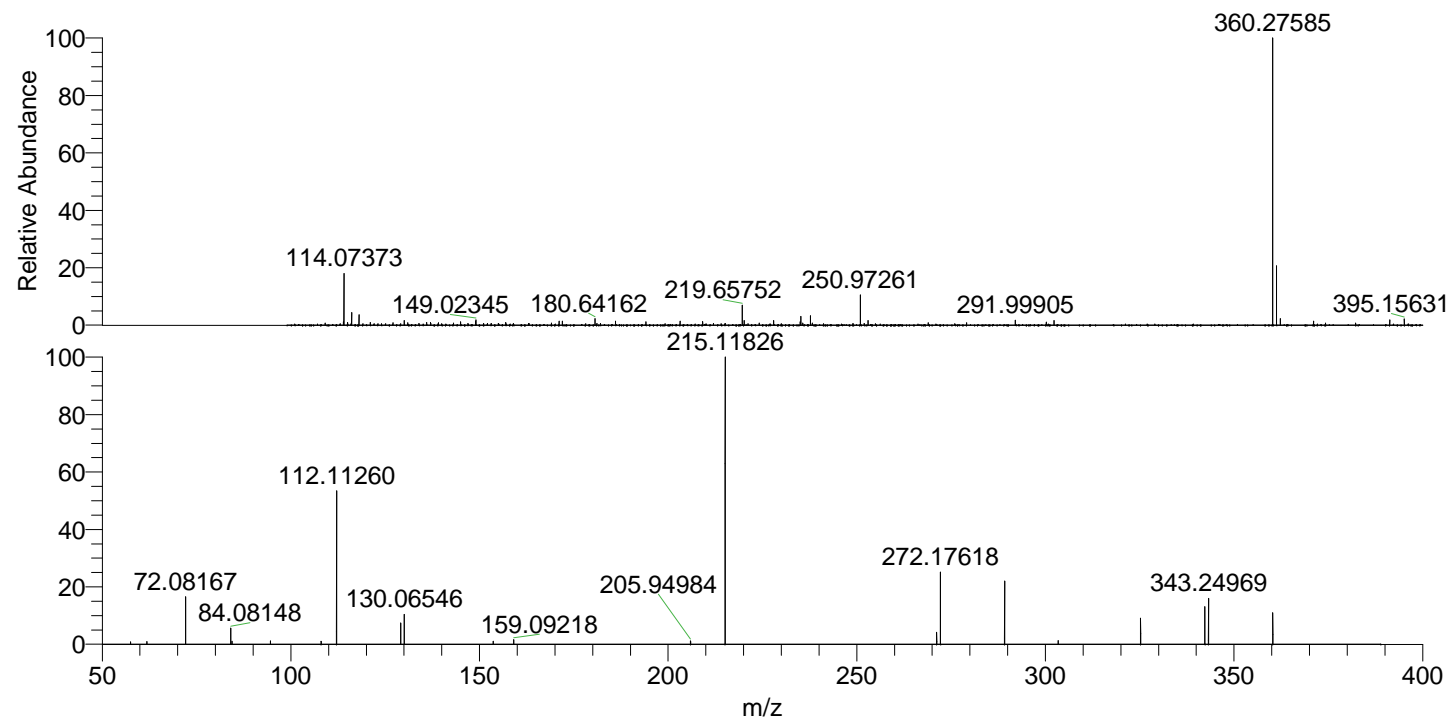
NL: 1.33E7
 Base Peak m/z= 360.27454-360.27814 F:
 FTMS + p ESI Full ms [100.00-1500.00]
 MS Hcurta

NL: 4.28E5
 Base Peak m/z= 180.64118-180.64298 F:
 FTMS + p ESI Full ms [100.00-1500.00]
 MS Hcurta

NL: 1.92E6
 Base Peak m/z= 50.00000-1500.00000 F:
 FTMS + p ESI d Full ms2
 360.28@hcd35.00 [50.00-385.00] MS
 Hcurta

Hcurta#3136 RT: 7.81
 F: FTMS + p ESI d Full ms2 360.28 ...
 m/z= 50.00000-1000.00000

m/z	Intensity	Relative
57.50084	3012.2	0.84
61.82045	3214.7	0.89
72.08167	56372.3	15.67
84.08148	20339.4	5.65
84.39436	3696.3	1.03
94.57111	3950.5	1.10
108.03537	3532.4	0.98
112.11260	190132.3	52.84
129.13911	25671.6	7.13
130.06546	36172.2	10.05
153.63506	3668.6	1.02
159.09218	5604.3	1.56
205.94984	4047.7	1.12
215.11826	359839.8	100.00
271.19193	14749.1	4.10
272.17618	88887.4	24.70
272.20331	4993.4	1.39
289.20258	76101.2	21.15
303.40158	4505.3	1.25
325.23892	30861.6	8.58
342.26572	45957.6	12.77
343.24969	54864.2	15.25
360.27658	39493.6	10.98



NL: 5.49E6
 Hcurta#3169 RT: 7.90
 AV: 1 T: FTMS + p
 ESI Full lock ms
 [100.00-1500.00]

NL: 3.39E5
 Hcurta#3136 RT: 7.81
 AV: 1 F: FTMS + p
 ESI d Full ms2
 360.28@hcd35.00
 [50.00-385.00]