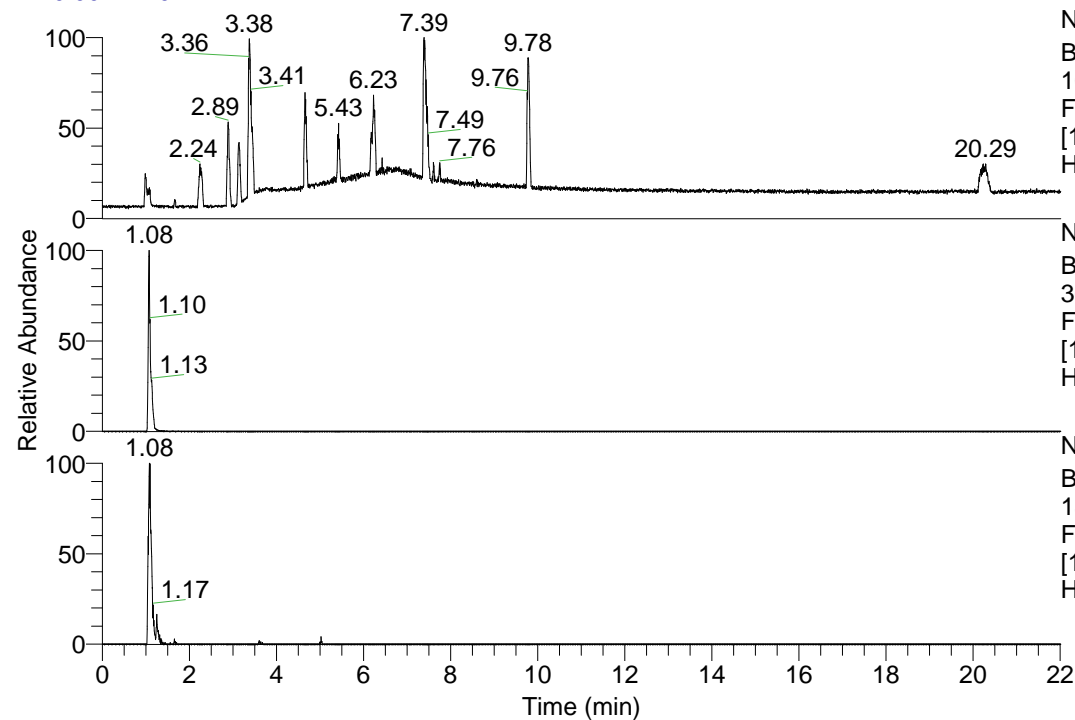


RT: 0.00 - 22.01



NL: 1.13E8
 Base Peak m/z=
 100.00000-1500.00000 F:
 FTMS + p ESI Full ms
 [100.00-1500.00] MS
 Hcurta_HDX

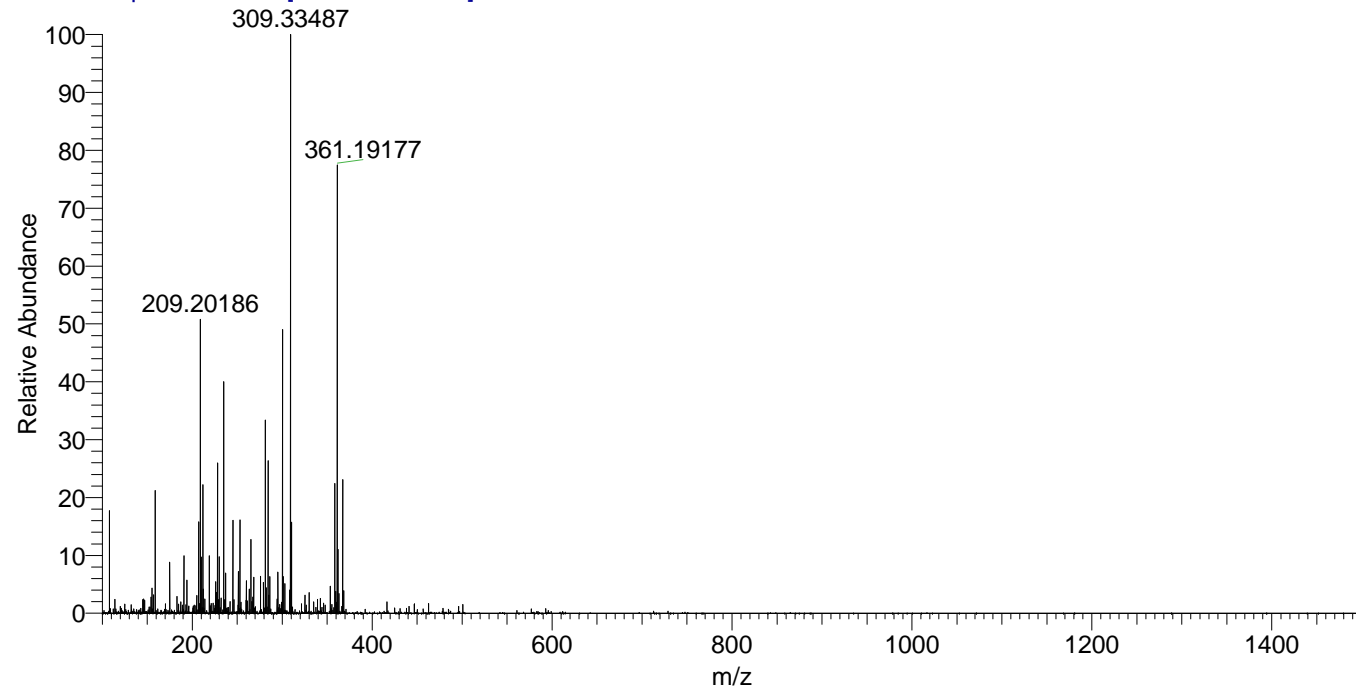
NL: 4.57E6
 Base Peak m/z=
 367.39821-367.40189 F:
 FTMS + p ESI Full ms
 [100.00-1500.00] MS
 Hcurta_HDX

NL: 3.17E5
 Base Peak m/z=
 184.70616-184.70800 F:
 FTMS + p ESI Full ms
 [100.00-1500.00] MS
 Hcurta_HDX

Hcurta_HDX#164 RT: 1.08
 T: FTMS + p ESI Full ms [100.00-1500.00]
 m/z= 367.00000-368.00000

m/z	Intensity	Relative	Delta (ppm)	Composition
367.39893	4441093.5	100.00	-1.56	C ₁₈ H ₃₅ ² H ₈ ON ₆
			2.65	C ₁₈ H ₃₃ ² H ₉ ON ₆

Hcurta_HDX #164 RT: 1.08 AV: 1 NL: 1.91E7
 T: FTMS + p ESI Full ms [100.00-1500.00]



Hcurta_HDX #164 RT: 1.08 AV: 1 NL: 1.48E7
 T: FTMS + p ESI Full ms [100.00-1500.00]

