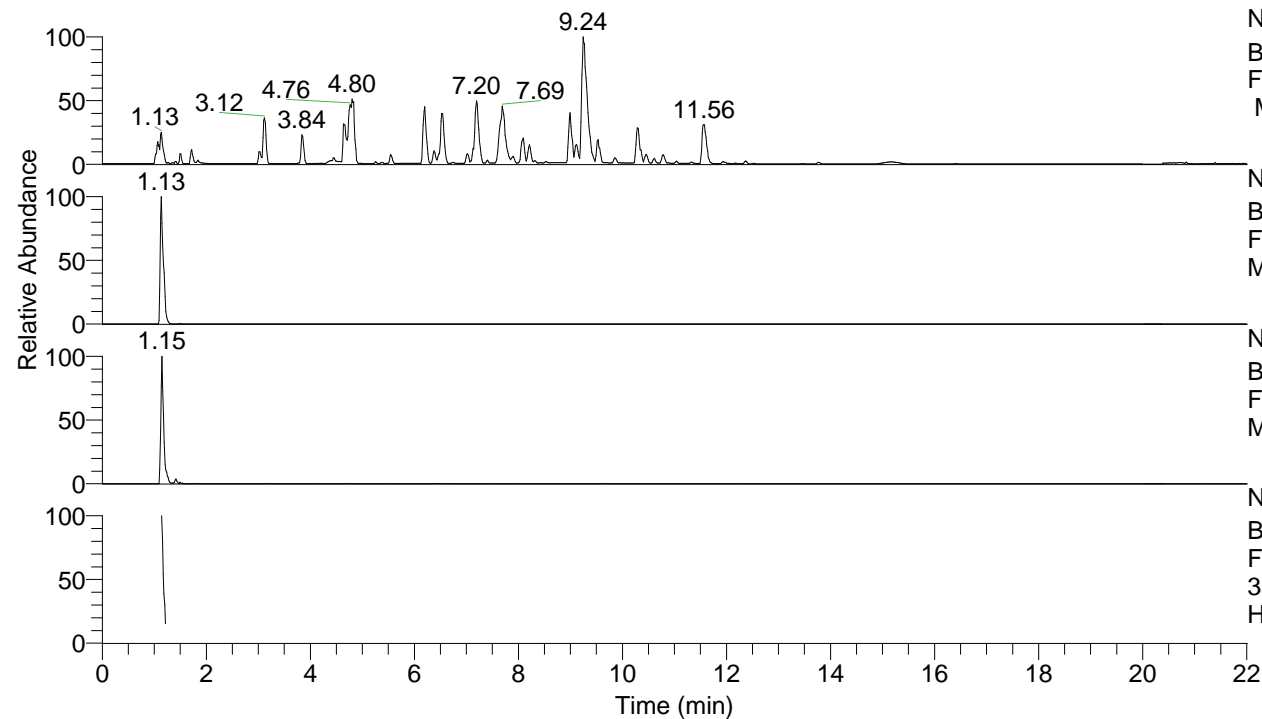


RT: 0.00 - 22.01



NL: 8.52E7
 Base Peak m/z= 100.00000-1500.00000
 F: FTMS + p ESI Full ms [100.00-1500.00]
 MS Hcurta

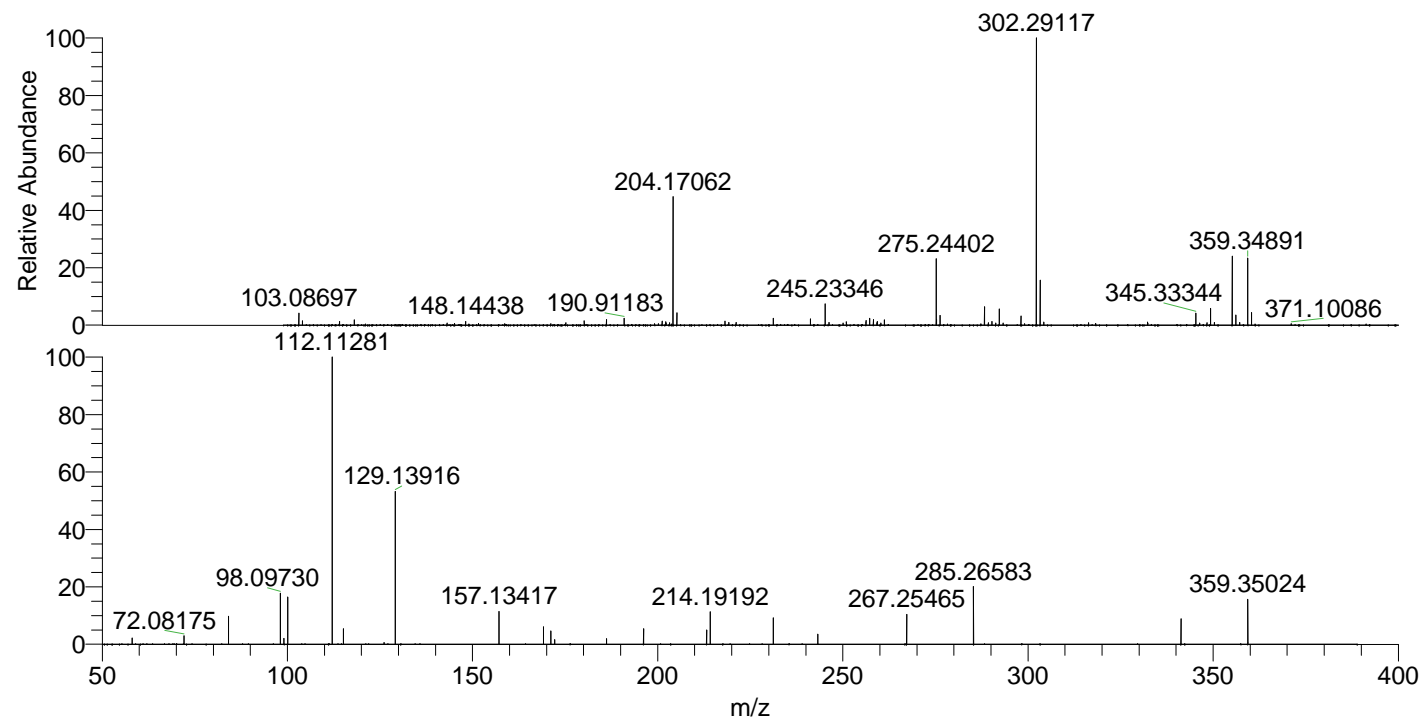
NL: 5.27E6
 Base Peak m/z= 359.34804-359.35164 F:
 FTMS + p ESI Full ms [100.00-1500.00]
 MS Hcurta

NL: 4.17E5
 Base Peak m/z= 180.17793-180.17973 F:
 FTMS + p ESI Full ms [100.00-1500.00]
 MS Hcurta

NL: 8.88E5
 Base Peak m/z= 50.00000-1500.00000 F:
 FTMS + p ESI d Full ms2
 359.35@hcd35.00 [50.00-385.00] MS
 Hcurta

Hcurta#460-491 RT: 1.14-1.22 AV: 6
 F: FTMS + p ESI d Full ms2 359.35 ...
 m/z= 50.00000-1000.00000

m/z	Intensity	Relative
58.06612	9528.6	2.17
72.08175	13090.3	2.97
84.08164	43085.6	9.79
98.09730	79101.2	17.97
99.09248	9106.9	2.07
100.07646	71982.6	16.36
112.11281	440093.1	100.00
115.12376	23668.8	5.38
126.12815	2902.2	0.66
129.13916	241877.0	54.96
157.13417	50808.3	11.54
169.17041	26868.9	6.11
171.14996	20891.8	4.75
172.18159	7352.7	1.67
186.19729	8582.7	1.95
196.18127	23939.5	5.44
213.20808	22132.5	5.03
214.19192	49999.2	11.36
231.21873	41786.8	9.49
243.25491	15384.3	3.50
267.25465	46378.9	10.54
285.26583	88731.7	20.16
341.33903	39080.1	8.88
359.35024	70083.6	15.92



NL: 2.15E7
 Hcurta#457 RT: 1.13
 AV: 1 T: FTMS + p ESI
 Full ms [100.00-1500.00]

NL: 4.39E5
 Hcurta#403-537 RT:
 1.14-1.22 AV: 6 F:
 FTMS + p ESI d Full ms2
 359.35@hcd35.00
 [50.00-385.00]