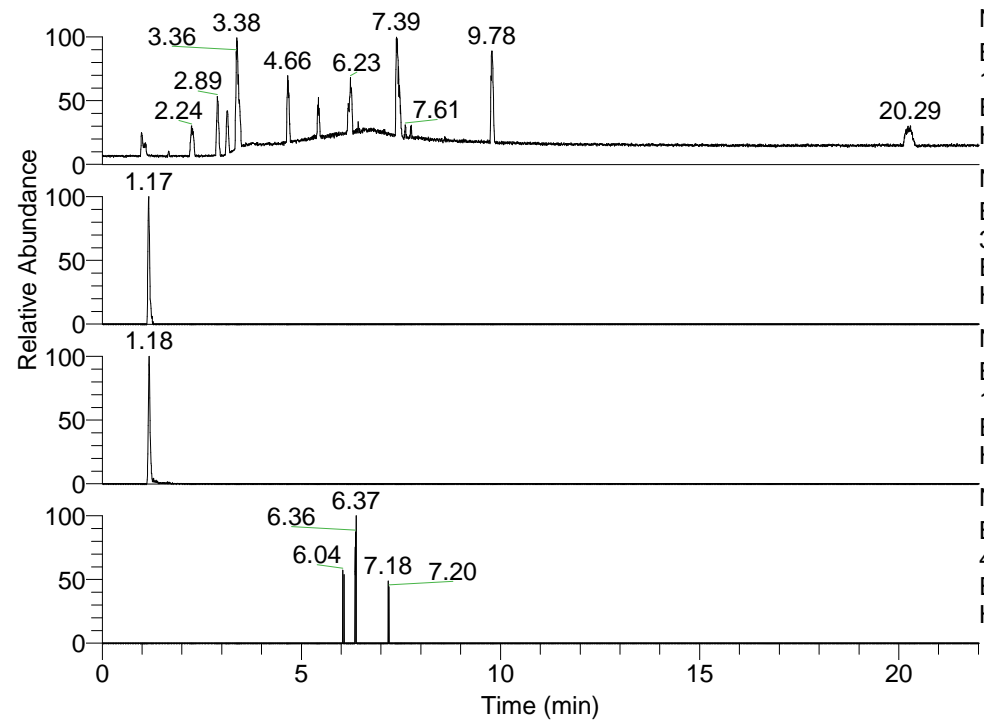


RT: 0.00 - 22.01



NL: 1.13E8  
Base Peak m/z=  
100.00000-1500.00000 F: FTMS + p  
ESI Full ms [100.00-1500.00] MS  
Hcurta\_HDX

NL: 2.28E5  
Base Peak m/z=  
362.37788-362.38150 F: FTMS + p  
ESI Full ms [100.00-1500.00] MS  
Hcurta\_HDX

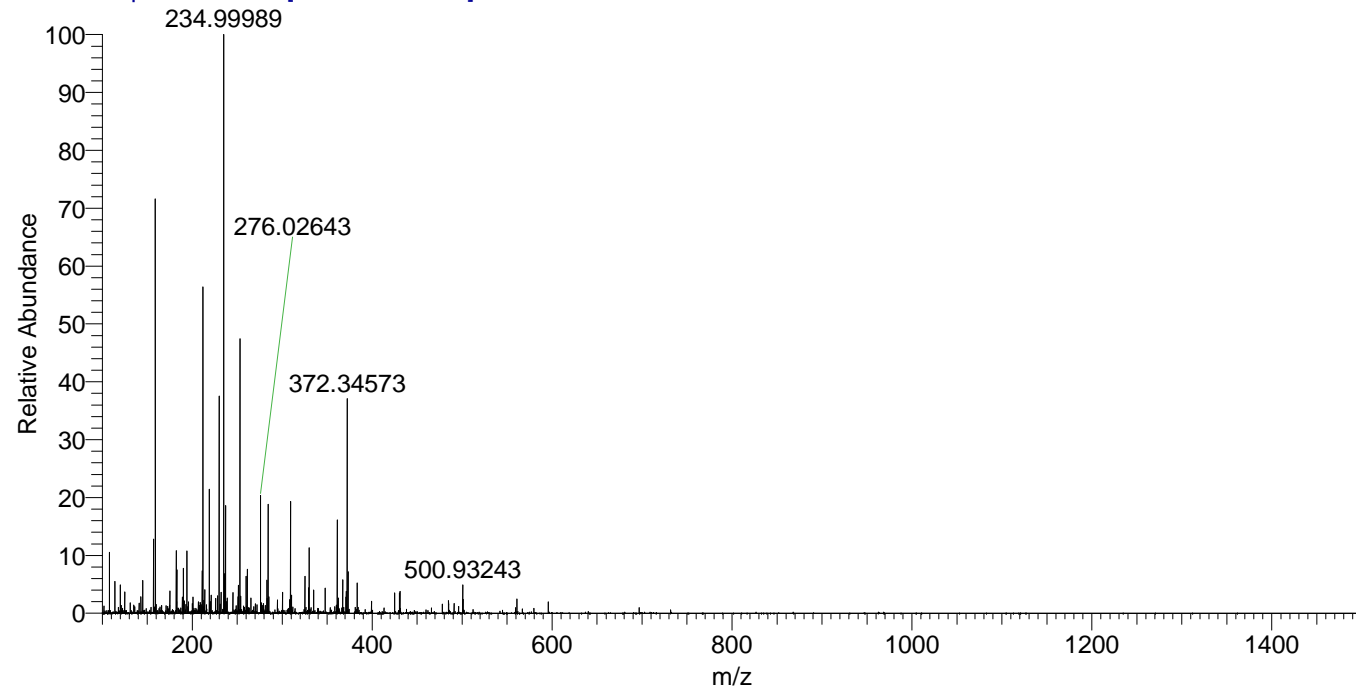
NL: 9.10E5  
Base Peak m/z=  
182.19599-182.19781 F: FTMS + p  
ESI Full ms [100.00-1500.00] MS  
Hcurta\_HDX

NL: 9.33E3  
Base Peak m/z=  
477.37644-477.38122 F: FTMS + p  
ESI Full ms [100.00-1500.00] MS  
Hcurta\_HDX

Hcurta\_HDX#179 RT: 1.17  
T: FTMS + p ESI Full ms [100.00-1500.00]  
m/z = 362.00000-363.00000

m/z	Intensity	Relative	Delta (ppm)	Composition
362.37869	206189.5	100.00	-1.25	C <sub>19</sub> H <sub>40</sub> <sup>2</sup> H <sub>4</sub> ON <sub>5</sub>
			3.03	C <sub>19</sub> H <sub>38</sub> <sup>2</sup> H <sub>5</sub> ON <sub>5</sub>

Hcurta\_HDX #179 RT: 1.17 AV: 1 NL: 7.81E6  
T: FTMS + p ESI Full ms [100.00-1500.00]



Hcurta\_HDX #179 RT: 1.17 AV: 1 NL: 1.26E6  
T: FTMS + p ESI Full ms [100.00-1500.00]

