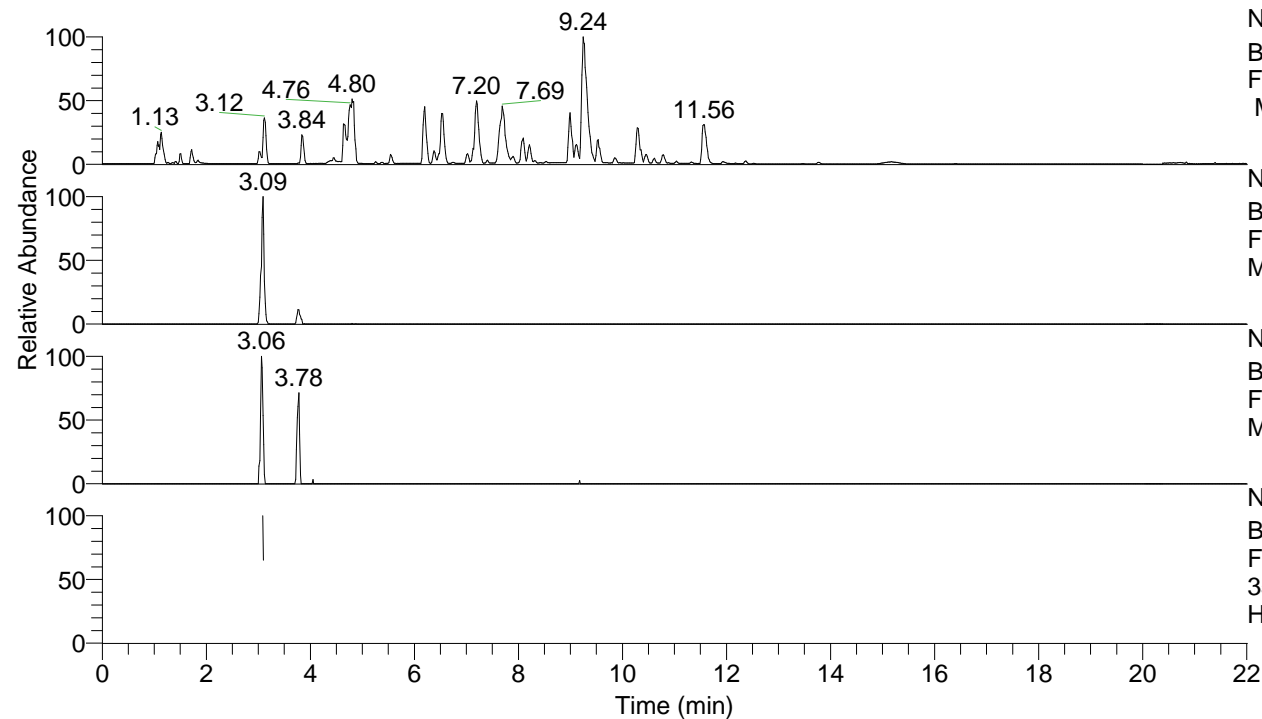


RT: 0.00 - 22.01



NL: 8.52E7
 Base Peak m/z= 100.00000-1500.00000
 F: FTMS + p ESI Full ms [100.00-1500.00]
 MS Hcurta

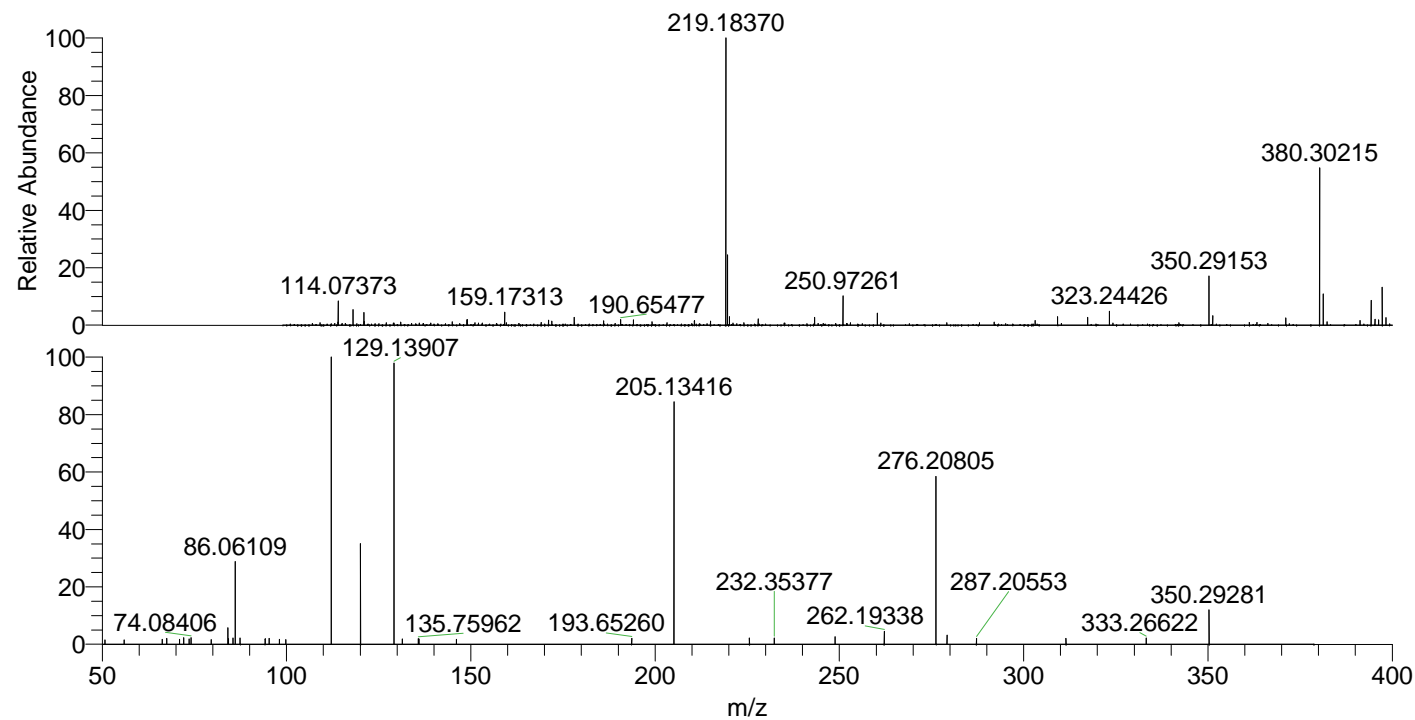
NL: 8.88E5
 Base Peak m/z= 350.29024-350.29374 F:
 FTMS + p ESI Full ms [100.00-1500.00]
 MS Hcurta

NL: 3.92E4
 Base Peak m/z= 175.64903-175.65079 F:
 FTMS + p ESI Full ms [100.00-1500.00]
 MS Hcurta

NL: 1.12E5
 Base Peak m/z= 50.00000-1500.00000 F:
 FTMS + p ESI d Full ms2
 350.29@hcd35.00 [50.00-375.00] MS
 Hcurta

Hcurta#1236-1241 RT: 3.09-3.10 AV: 2
 F: FTMS + p ESI d Full ms2 350.29 ...
 m/z= 50.00000-1000.00000

| m/z | Intensity | Relative |
|-----------|-----------|----------|
| 50.76341 | 1270.6 | 1.45 |
| 55.93700 | 1347.0 | 1.53 |
| 66.27464 | 1522.9 | 1.73 |
| 67.46286 | 1789.2 | 2.04 |
| 70.97435 | 1482.4 | 1.69 |
| 72.08159 | 2017.3 | 2.30 |
| 73.60075 | 1588.2 | 1.81 |
| 74.08406 | 2066.2 | 2.35 |
| 79.53412 | 1438.5 | 1.64 |
| 84.08170 | 5053.9 | 5.75 |
| 84.24456 | 1719.4 | 1.96 |
| 85.51408 | 1856.6 | 2.11 |
| 86.06109 | 25110.5 | 28.59 |
| 87.42848 | 1913.1 | 2.18 |
| 94.20594 | 1673.5 | 1.91 |
| 95.26601 | 1819.3 | 2.07 |
| 98.03810 | 1520.6 | 1.73 |
| 99.79546 | 1397.8 | 1.59 |
| 112.11274 | 86560.5 | 98.57 |
| 120.07368 | 1996.4 | 2.27 |
| 120.08140 | 30421.5 | 34.64 |
| 129.13907 | 87817.6 | 100.00 |
| 131.44997 | 1605.8 | 1.83 |
| 135.75962 | 1658.1 | 1.89 |
| 135.93072 | 1591.4 | 1.81 |
| 146.10705 | 1544.4 | 1.76 |
| 193.65260 | 1797.6 | 2.05 |
| 205.13416 | 73505.4 | 83.70 |
| 225.59930 | 1898.7 | 2.16 |
| 232.35377 | 1904.2 | 2.17 |
| 248.85960 | 2226.8 | 2.54 |
| 262.19338 | 3966.6 | 4.52 |
| 276.20805 | 51159.9 | 58.26 |
| 279.21888 | 2845.0 | 3.24 |
| 287.20553 | 1789.0 | 2.04 |
| 311.48051 | 1794.4 | 2.04 |
| 333.26622 | 1887.6 | 2.15 |
| 350.29281 | 10309.4 | 11.74 |



NL: 5.00E6
 Hcurta#1237 RT: 3.09
 AV: 1 T: FTMS + p ESI
 Full lock ms
 [100.00-1500.00]

NL: 8.62E4
 Hcurta#1158-1306 RT:
 3.09-3.10 AV: 2 F: FTMS
 + p ESI d Full ms2
 350.29@hcd35.00
 [50.00-375.00]