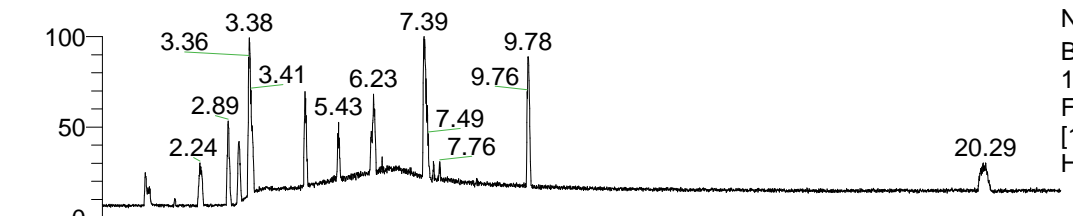


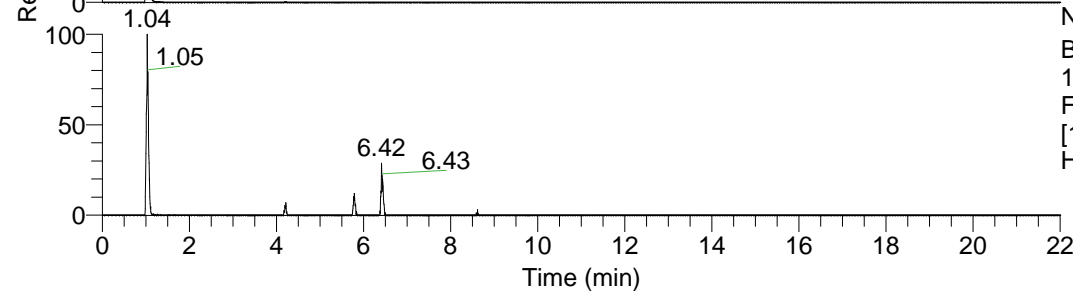
RT: 0.00 - 22.01



NL: 1.13E8
 Base Peak m/z=
 100.00000-1500.00000 F:
 FTMS + p ESI Full ms
 [100.00-1500.00] MS
 Hcurta_HDX



NL: 9.12E6
 Base Peak m/z=
 358.38380-358.38738 F:
 FTMS + p ESI Full ms
 [100.00-1500.00] MS
 Hcurta_HDX

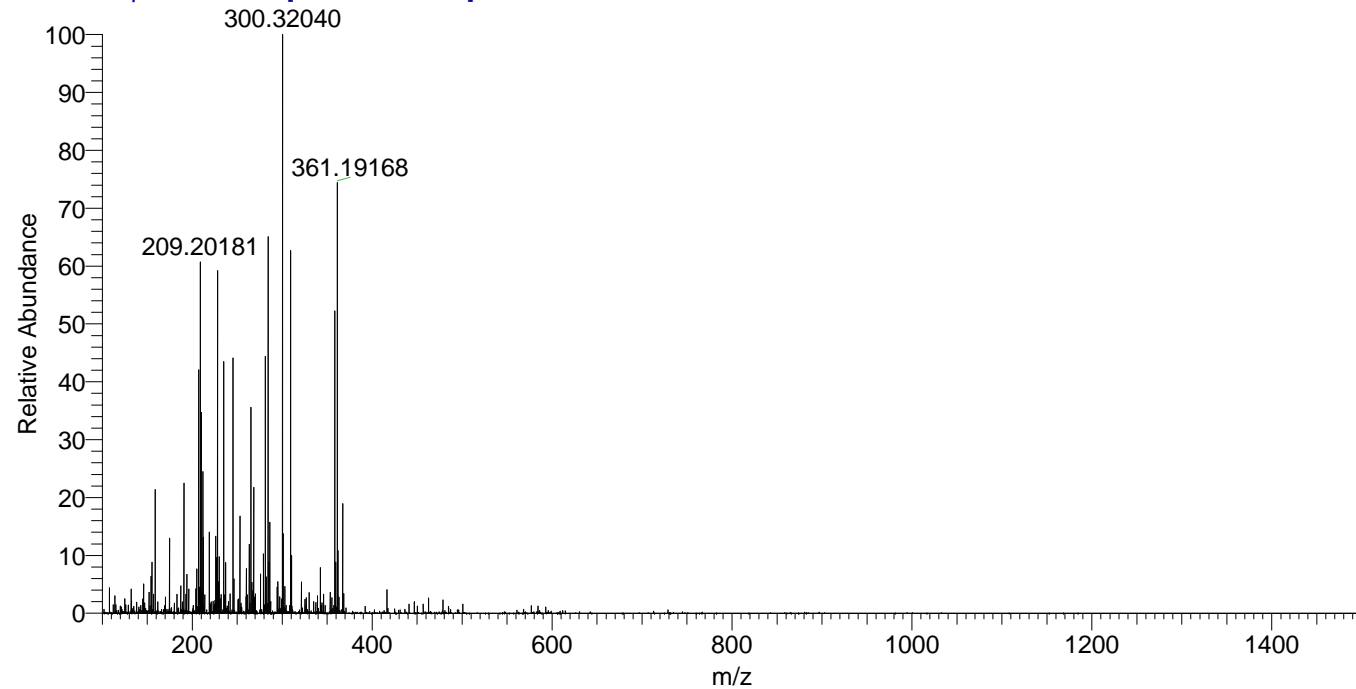


NL: 5.52E5
 Base Peak m/z=
 180.19895-180.20075 F:
 FTMS + p ESI Full ms
 [100.00-1500.00] MS
 Hcurta_HDX

Hcurta_HDX#160 RT: 1.06
 T: FTMS + p ESI Full ms [100.00-1500.00]
 m/z= 358.00000-359.00000

m/z	Intensity	Relative	Delta (ppm)	Composition
358.38443	9116480.0	100.00	-1.71	C ₁₆ H ₃₂ ² H ₉ O ₂ N ₆
			2.61	C ₁₆ H ₃₀ ² H ₁₀ O ₂ N ₆

Hcurta_HDX #160 RT: 1.06 AV: 1 NL: 1.67E7
 T: FTMS + p ESI Full ms [100.00-1500.00]



Hcurta_HDX #160 RT: 1.06 AV: 1 NL: 1.24E7
 T: FTMS + p ESI Full ms [100.00-1500.00]

