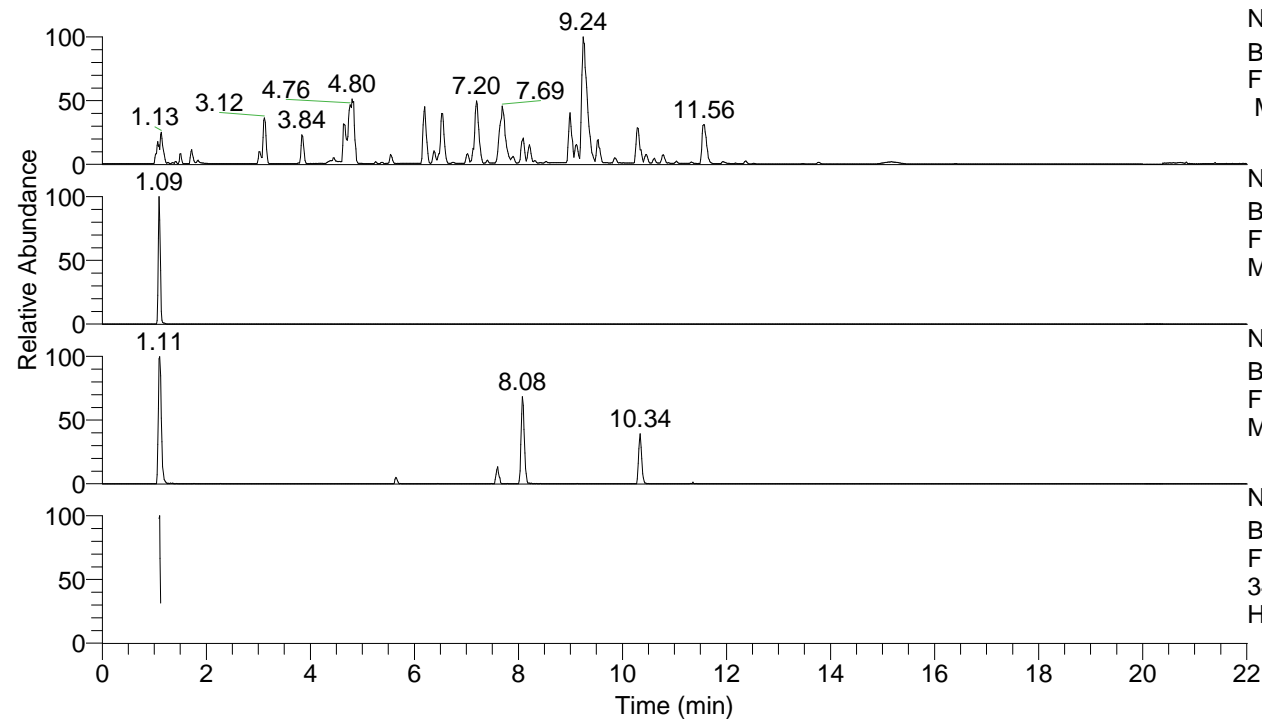


RT: 0.00 - 22.01



NL: 8.52E7  
 Base Peak m/z= 100.00000-1500.00000  
 F: FTMS + p ESI Full ms [100.00-1500.00]  
 MS Hcurta

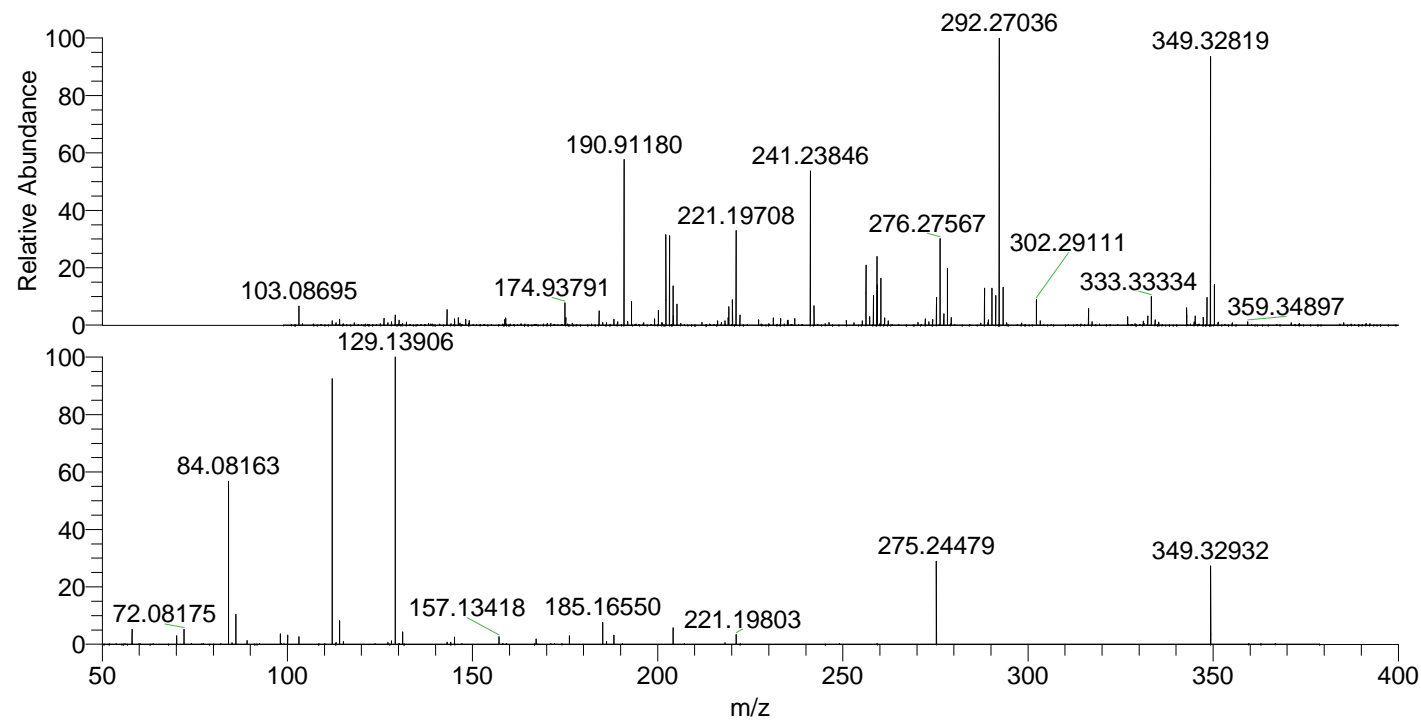
NL: 1.23E7  
 Base Peak m/z= 349.32735-349.33085 F:  
 FTMS + p ESI Full ms [100.00-1500.00]  
 MS Hcurta

NL: 3.56E5  
 Base Peak m/z= 175.16758-175.16934 F:  
 FTMS + p ESI Full ms [100.00-1500.00]  
 MS Hcurta

NL: 1.51E6  
 Base Peak m/z= 50.00000-1500.00000 F:  
 FTMS + p ESI d Full ms2  
 349.33@hcd35.00 [50.00-375.00] MS  
 Hcurta

Hcurta#438-452 RT: 1.09-1.12 AV: 4  
 F: FTMS + p ESI d Full ms2 349.33@h ...  
 m/z= 50.00000-1000.00000

m/z	Intensity	Relative
58.06611	52501.0	5.02
70.06599	30453.9	2.91
72.08175	53442.6	5.11
84.08163	580038.8	55.47
85.07657	5482.7	0.52
86.06088	108804.8	10.41
89.10815	13554.9	1.30
98.09714	38647.4	3.70
100.07653	32657.8	3.12
103.08720	26689.3	2.55
112.11277	945949.6	90.47
113.10838	5703.3	0.55
114.09201	85610.6	8.19
115.12361	9442.3	0.90
127.12393	6297.1	0.60
128.10759	12037.2	1.15
129.13906	1045629.1	100.00
131.11826	43105.4	4.12
143.11865	7290.6	0.70
144.12619	6861.8	0.66
145.13392	26418.2	2.53
157.13418	26558.8	2.54
167.15484	19249.5	1.84
176.14038	31084.4	2.97
185.16550	78457.7	7.50
186.19738	9822.5	0.94
188.17623	33430.9	3.20
204.17120	60782.6	5.81
221.19803	34858.1	3.33
275.24479	295215.2	28.23
349.32932	279166.1	26.70



NL: 1.31E7  
 Hcurta#439 RT: 1.09  
 AV: 1 T: FTMS + p ESI  
 Full ms [100.00-1500.00]

NL: 1.02E6  
 Hcurta#402-496 RT:  
 1.09-1.12 AV: 4 F:  
 FTMS + p ESI d Full ms2  
 349.33@hcd35.00  
 [50.00-375.00]