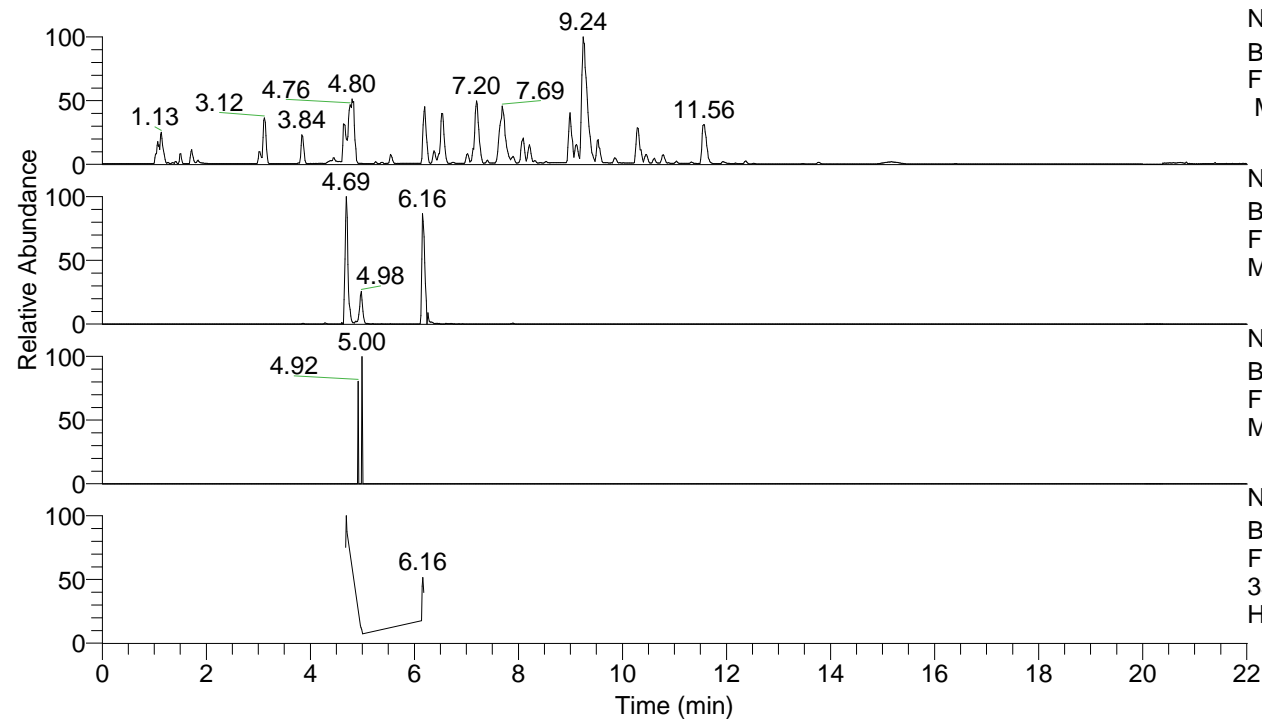


RT: 0.00 - 22.01



NL: 8.52E7
 Base Peak m/z= 100.00000-1500.00000
 F: FTMS + p ESI Full ms [100.00-1500.00]
 MS Hcurta

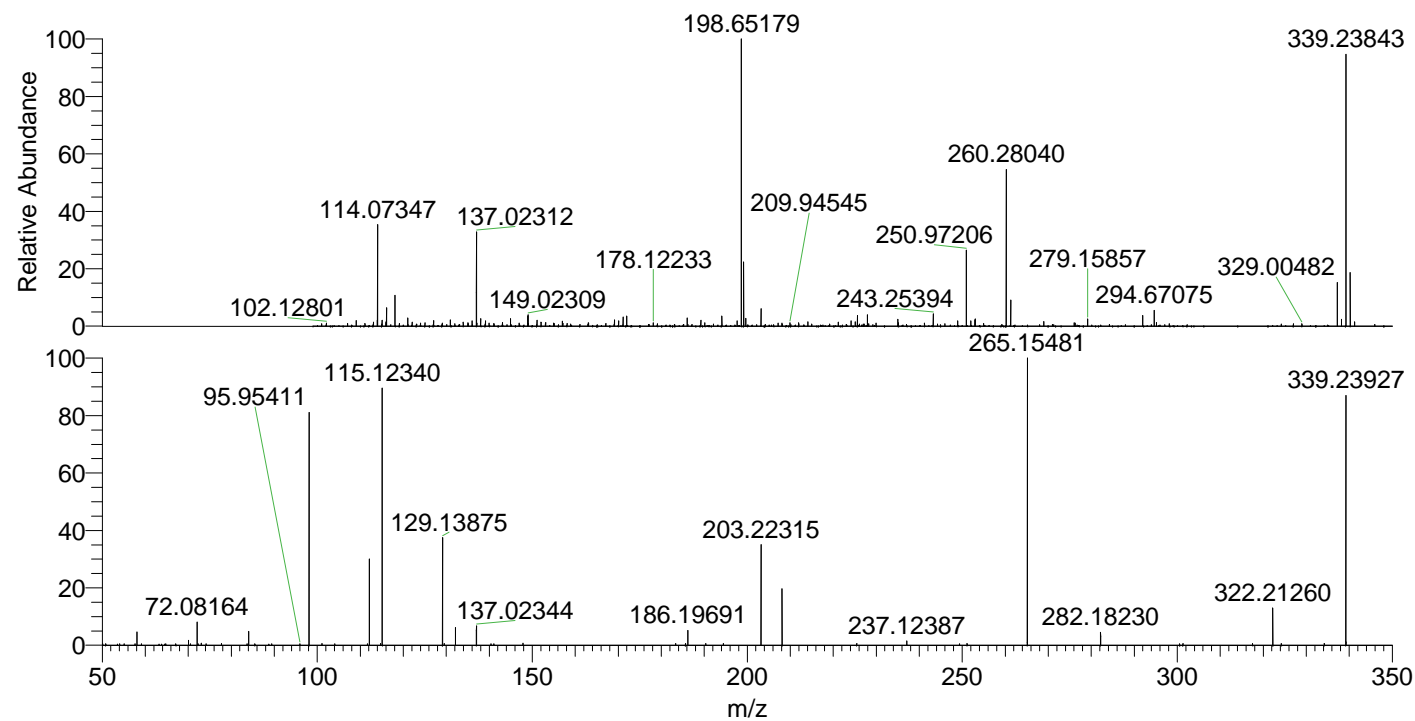
NL: 2.52E6
 Base Peak m/z= 339.23792-339.24132 F:
 FTMS + p ESI Full ms [100.00-1500.00]
 MS Hcurta

NL: 6.02E3
 Base Peak m/z= 170.12287-170.12457 F:
 FTMS + p ESI Full ms [100.00-1500.00]
 MS Hcurta

NL: 4.23E5
 Base Peak m/z= 50.00000-1500.00000 F:
 FTMS + p ESI d Full ms2
 339.24@hcd35.00 [50.00-365.00] MS
 Hcurta

Hcurta#2460-2478 RT: 6.14-6.18 AV: 4
 F: FTMS + p ESI d Full ms2 339.24 ...
 m/z= 50.00000-1000.00000

m/z	Intensity	Relative
58.06595	7121.5	4.57
59.13783	780.9	0.50
64.80751	787.4	0.50
70.06585	2674.2	1.71
72.08164	12605.7	8.08
73.04768	1055.3	0.68
74.16265	882.8	0.57
77.74673	911.3	0.58
84.08142	7422.5	4.76
84.08612	897.3	0.58
95.95411	850.9	0.55
98.09698	128960.8	82.68
101.12057	880.0	0.56
112.11253	46797.5	30.00
114.71970	911.6	0.58
115.12340	139570.8	89.48
129.13875	59376.2	38.07
129.53482	879.4	0.56
132.14969	9517.9	6.10
137.02344	10416.8	6.68
140.40355	812.7	0.52
141.05297	844.2	0.54
147.87034	1063.9	0.68
183.36016	925.0	0.59
185.64553	965.5	0.62
186.19691	7930.7	5.08
190.35070	905.3	0.58
194.44390	890.6	0.57
203.22315	54421.1	34.89
208.05483	973.1	0.62
208.09687	30416.2	19.50
225.46100	895.4	0.57
237.12387	2265.3	1.45
249.37483	844.0	0.54
251.13674	941.9	0.60
265.15481	155980.2	100.00
282.18230	6932.4	4.44
300.55962	849.2	0.54
301.33749	881.7	0.57
317.51783	902.4	0.58
322.21260	20452.1	13.11
324.21828	932.7	0.60
334.21883	978.4	0.63
339.23927	136818.1	87.72
359.08127	1053.1	0.68



NL: 2.20E6
 Hcurta#2467 RT: 6.16
 AV: 1 T: FTMS + p ESI
 Full lock ms
 [100.00-1500.00]

NL: 1.54E5
 Hcurta#2415-2534 RT:
 6.14-6.18 AV: 4 F: FTMS
 + p ESI d Full ms2
 339.24@hcd35.00
 [50.00-365.00]