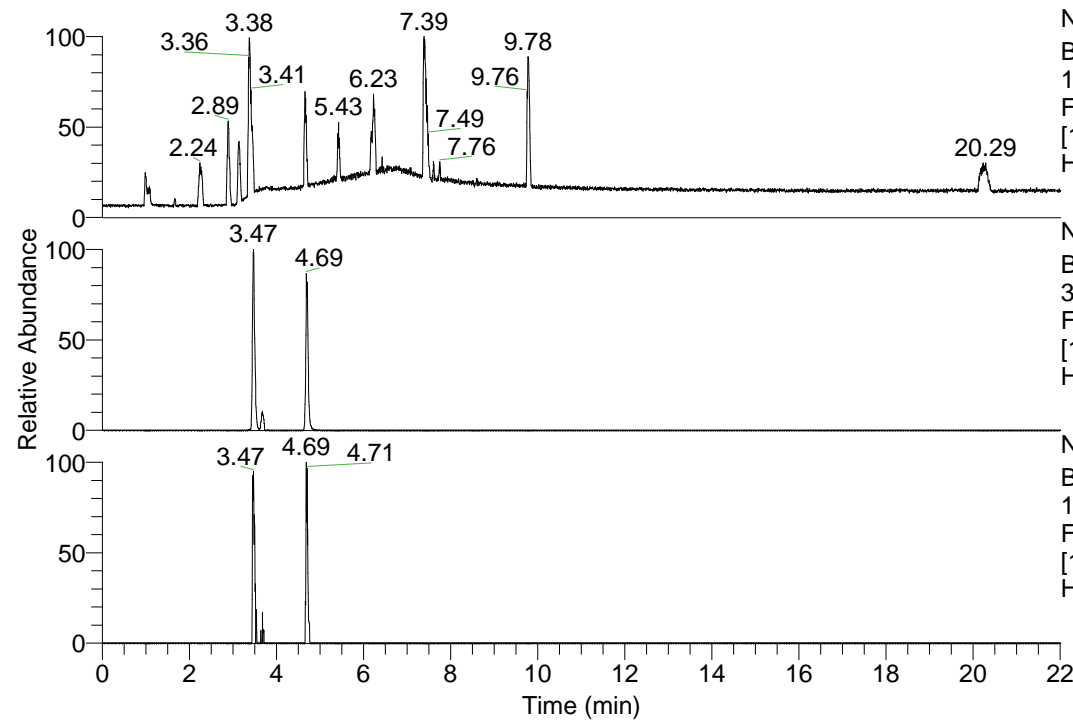


RT: 0.00 - 22.01



NL: 1.13E8  
Base Peak m/z=  
100.00000-1500.00000 F:  
FTMS + p ESI Full ms  
[100.00-1500.00] MS  
Hcurta\_HDX

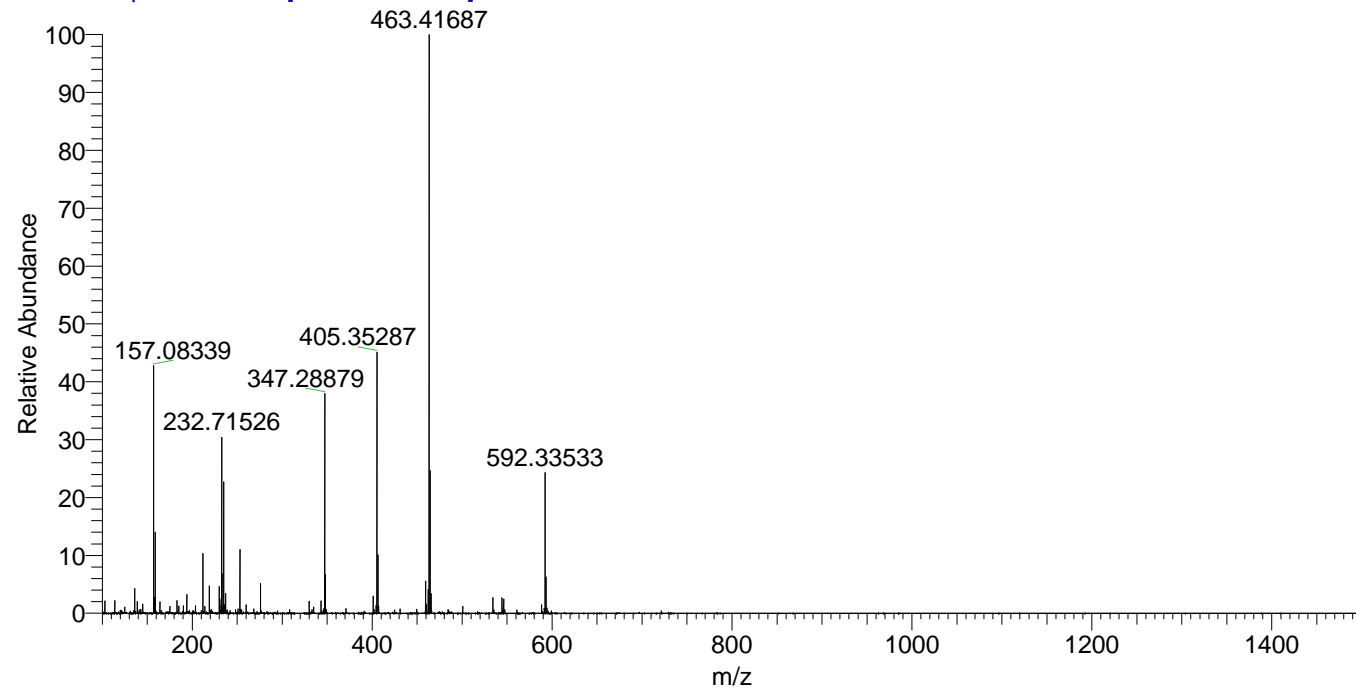
NL: 1.52E7  
Base Peak m/z=  
347.28809-347.29157 F:  
FTMS + p ESI Full ms  
[100.00-1500.00] MS  
Hcurta\_HDX

NL: 6.51E4  
Base Peak m/z=  
174.65110-174.65284 F:  
FTMS + p ESI Full ms  
[100.00-1500.00] MS  
Hcurta\_HDX

Hcurta\_HDX#539 RT: 3.47  
T: FTMS + p ESI Full ms [100.00-1500.00]

m/z	Intensity	Relative	Delta (ppm)	Composition
347.28879	14784954.0	100.00	-1.42	C <sub>17</sub> H <sub>23</sub> <sup>2</sup> H <sub>8</sub> O <sub>3</sub> N <sub>4</sub>
			3.04	C <sub>17</sub> H <sub>21</sub> <sup>2</sup> H <sub>9</sub> O <sub>3</sub> N <sub>4</sub>

Hcurta\_HDX #539 RT: 3.47 AV: 1 NL: 3.84E7  
T: FTMS + p ESI Full ms [100.00-1500.00]



Hcurta\_HDX #539 RT: 3.47 AV: 1 NL: 1.46E7  
T: FTMS + p ESI Full ms [100.00-1500.00]

