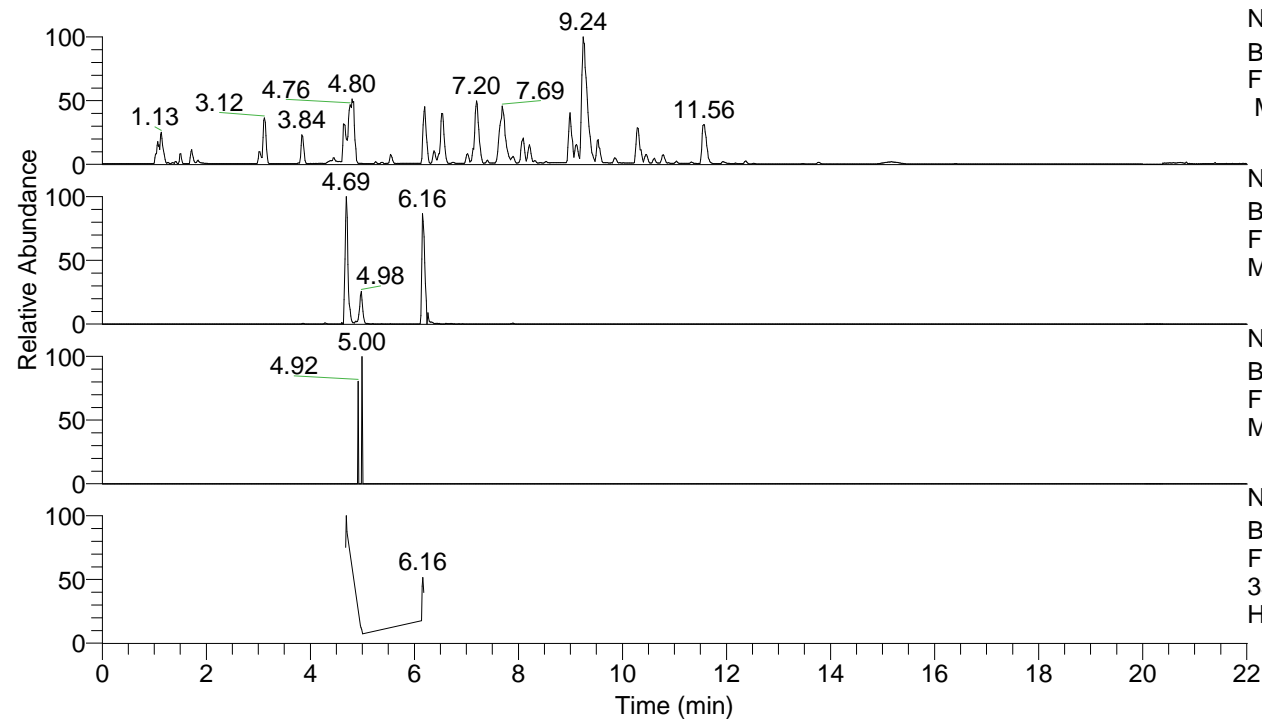


RT: 0.00 - 22.01



NL: 8.52E7  
 Base Peak m/z= 100.00000-1500.00000  
 F: FTMS + p ESI Full ms [100.00-1500.00]  
 MS Hcurta

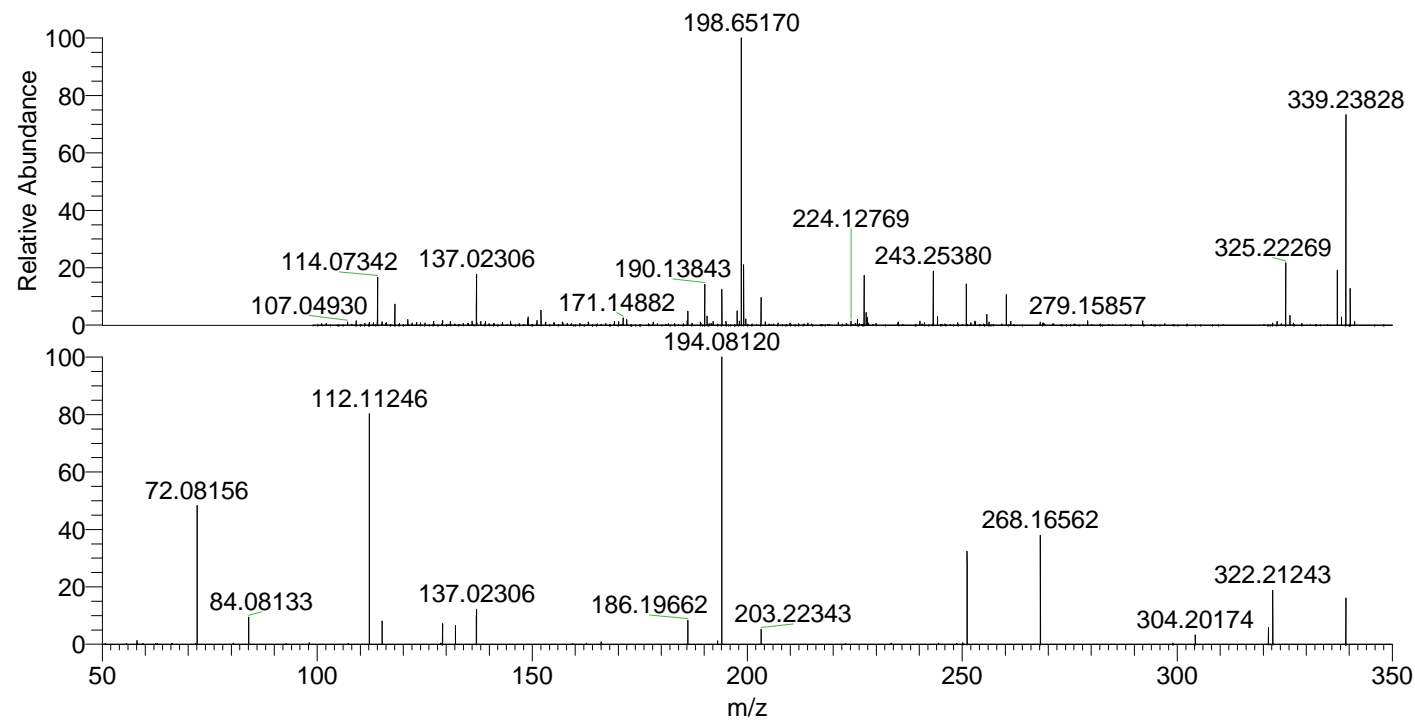
NL: 2.52E6  
 Base Peak m/z= 339.23792-339.24132 F:  
 FTMS + p ESI Full ms [100.00-1500.00]  
 MS Hcurta

NL: 6.02E3  
 Base Peak m/z= 170.12287-170.12457 F:  
 FTMS + p ESI Full ms [100.00-1500.00]  
 MS Hcurta

NL: 4.23E5  
 Base Peak m/z= 50.00000-1500.00000 F:  
 FTMS + p ESI d Full ms2  
 339.24@hcd35.00 [50.00-365.00] MS  
 Hcurta

Hcurta#1872-1883 RT: 4.68-4.70 AV: 3  
 F: FTMS + p ESI d Full ms2 339.24 ...  
 m/z= 50.00000-1000.00000

m/z	Intensity	Relative
58.06598	4488.4	1.29
72.08156	170026.1	48.70
72.08560	2253.1	0.65
84.08133	33294.4	9.54
112.11246	281024.8	80.49
115.12316	28509.9	8.17
129.13861	25971.2	7.44
132.14949	22902.4	6.56
137.02306	42602.3	12.20
166.04997	2875.1	0.82
186.19662	29261.7	8.38
193.09732	3975.8	1.14
194.08120	349156.8	100.00
203.22343	18232.9	5.22
251.13882	113381.5	32.47
268.16562	133382.8	38.20
304.20174	11745.9	3.36
321.22885	20572.2	5.89
322.21243	67920.4	19.45
339.23912	56644.0	16.22



NL: 3.31E6  
 Hcurta#1879 RT: 4.69  
 AV: 1 T: FTMS + p ESI  
 Full lock ms  
 [100.00-1500.00]

NL: 3.49E5  
 Hcurta#1868-1904 RT:  
 4.68-4.70 AV: 3 F: FTMS  
 + p ESI d Full ms2  
 339.24@hcd35.00  
 [50.00-365.00]