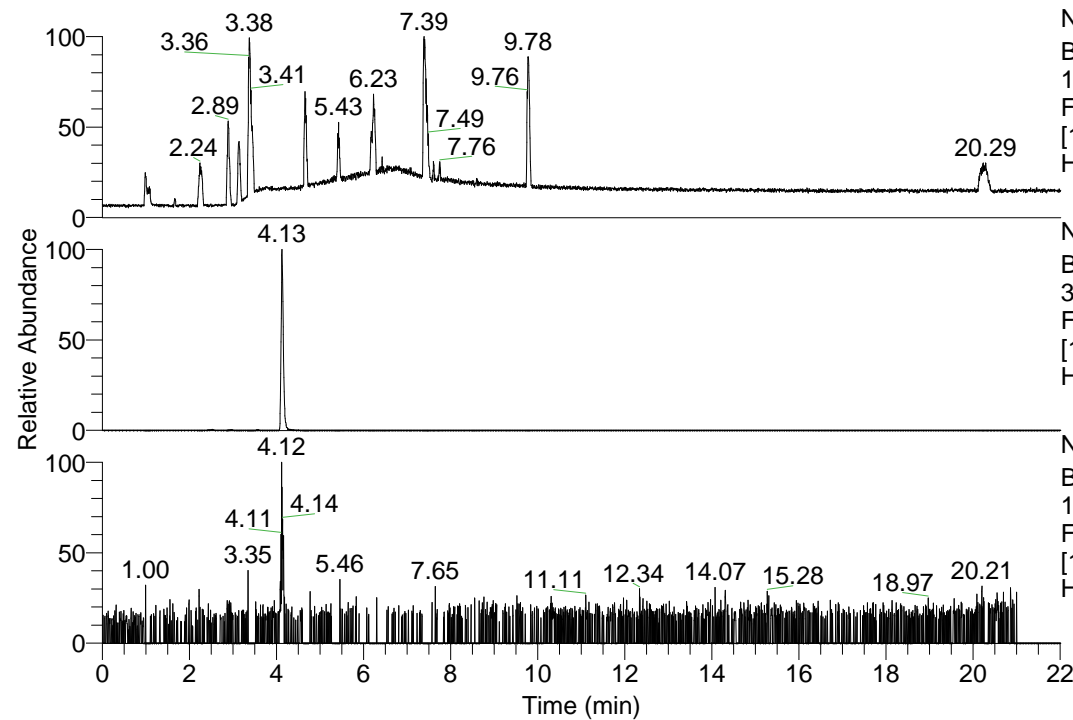


RT: 0.00 - 22.01



NL: 1.13E8  
Base Peak m/z=  
100.00000-1500.00000 F:  
FTMS + p ESI Full ms  
[100.00-1500.00] MS  
Hcurta\_HDX

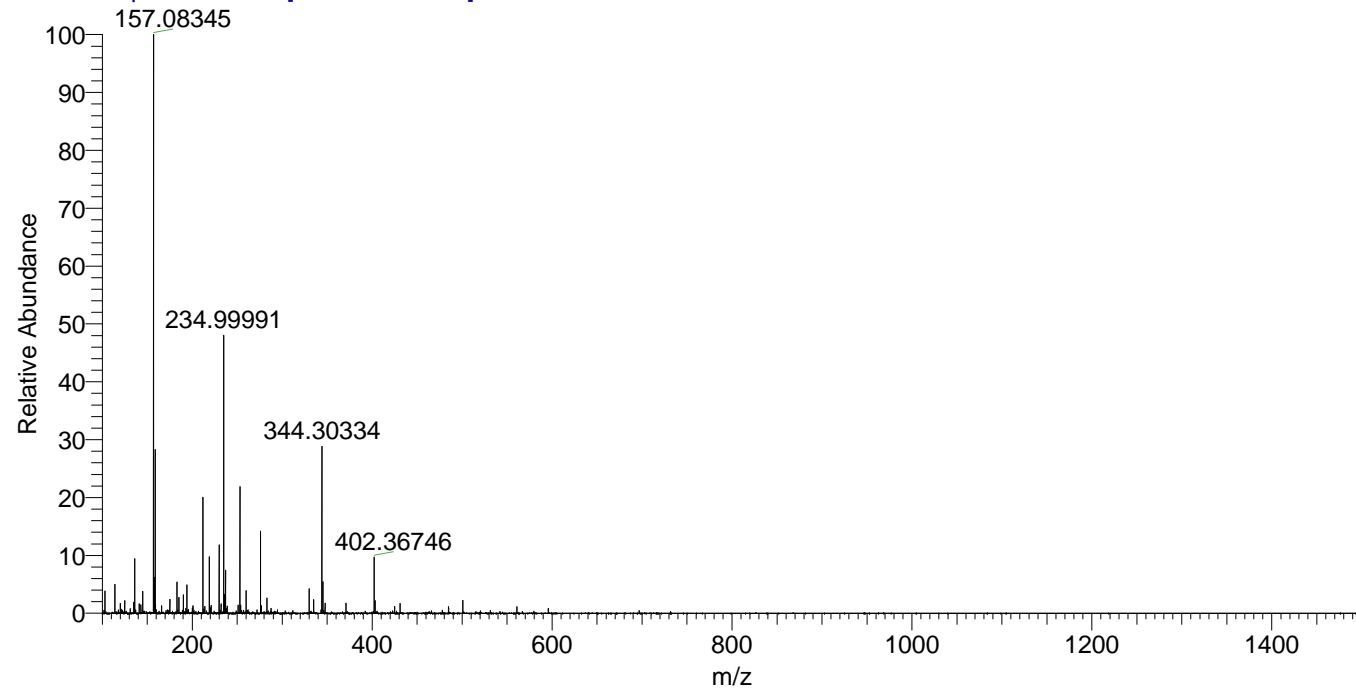
NL: 5.73E6  
Base Peak m/z=  
344.30257-344.30601 F:  
FTMS + p ESI Full ms  
[100.00-1500.00] MS  
Hcurta\_HDX

NL: 2.29E4  
Base Peak m/z=  
173.15833-173.16007 F:  
FTMS + p ESI Full ms  
[100.00-1500.00] MS  
Hcurta\_HDX

Hcurta\_HDX#646 RT: 4.13  
T: FTMS + p ESI Full ms [100.00-1500.00]  
m/z= 344.00000-345.00000

m/z	Intensity	Relative	Delta (ppm)	Composition
344.30334	5730389.5	100.00	-1.15	C <sub>18</sub> H <sub>26</sub> <sup>2</sup> H <sub>7</sub> O <sub>2</sub> N <sub>4</sub>
			3.35	C <sub>18</sub> H <sub>24</sub> <sup>2</sup> H <sub>8</sub> O <sub>2</sub> N <sub>4</sub>

Hcurta\_HDX #646 RT: 4.13 AV: 1 NL: 1.87E7  
T: FTMS + p ESI Full ms [100.00-1500.00]



Hcurta\_HDX #646 RT: 4.13 AV: 1 NL: 5.38E6  
T: FTMS + p ESI Full ms [100.00-1500.00]

