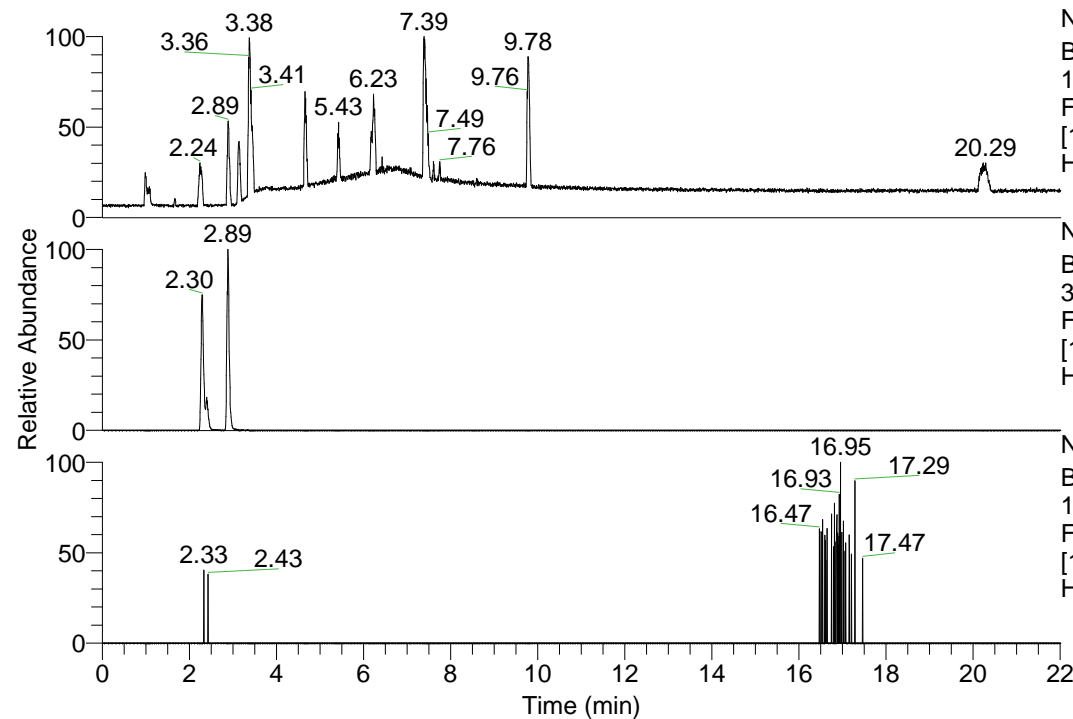


RT: 0.00 - 22.01



NL: 1.13E8  
 Base Peak m/z=  
 100.00000-1500.00000 F:  
 FTMS + p ESI Full ms  
 [100.00-1500.00] MS  
 Hcurta\_HDX

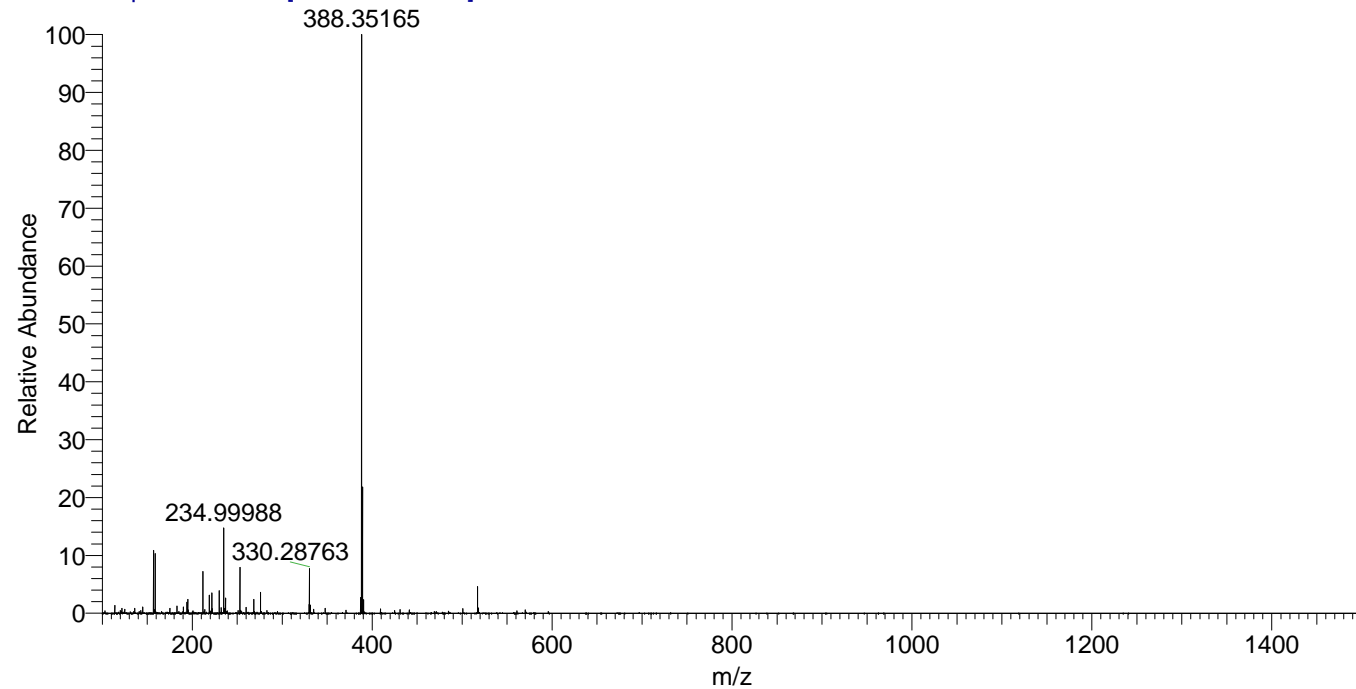
NL: 4.38E6  
 Base Peak m/z=  
 330.28699-330.29029 F:  
 FTMS + p ESI Full ms  
 [100.00-1500.00] MS  
 Hcurta\_HDX

NL: 6.24E3  
 Base Peak m/z=  
 166.15054-166.15220 F:  
 FTMS + p ESI Full ms  
 [100.00-1500.00] MS  
 Hcurta\_HDX

Hcurta\_HDX#442 RT: 2.89  
 T: FTMS + p ESI Full ms [100.00-1500.00]  
 m/z= 330.00000-331.00000

| m/z       | Intensity | Relative | Delta (ppm) | Composition   |
|-----------|-----------|----------|-------------|---|
| 330.28763 | 4381176.0 | 100.00   | -1.40       | C <sub>17</sub> H <sub>24</sub> <sup>2</sup> H <sub>7</sub> O <sub>2</sub> N <sub>4</sub> |
|           |           |          | 3.29        | C <sub>17</sub> H <sub>22</sub> <sup>2</sup> H <sub>8</sub> O <sub>2</sub> N <sub>4</sub> |

Hcurta\_HDX #442 RT: 2.89 AV: 1 NL: 5.60E7  
 T: FTMS + p ESI Full ms [100.00-1500.00]



Hcurta\_HDX #442 RT: 2.89 AV: 1 NL: 4.34E6  
 T: FTMS + p ESI Full ms [100.00-1500.00]

