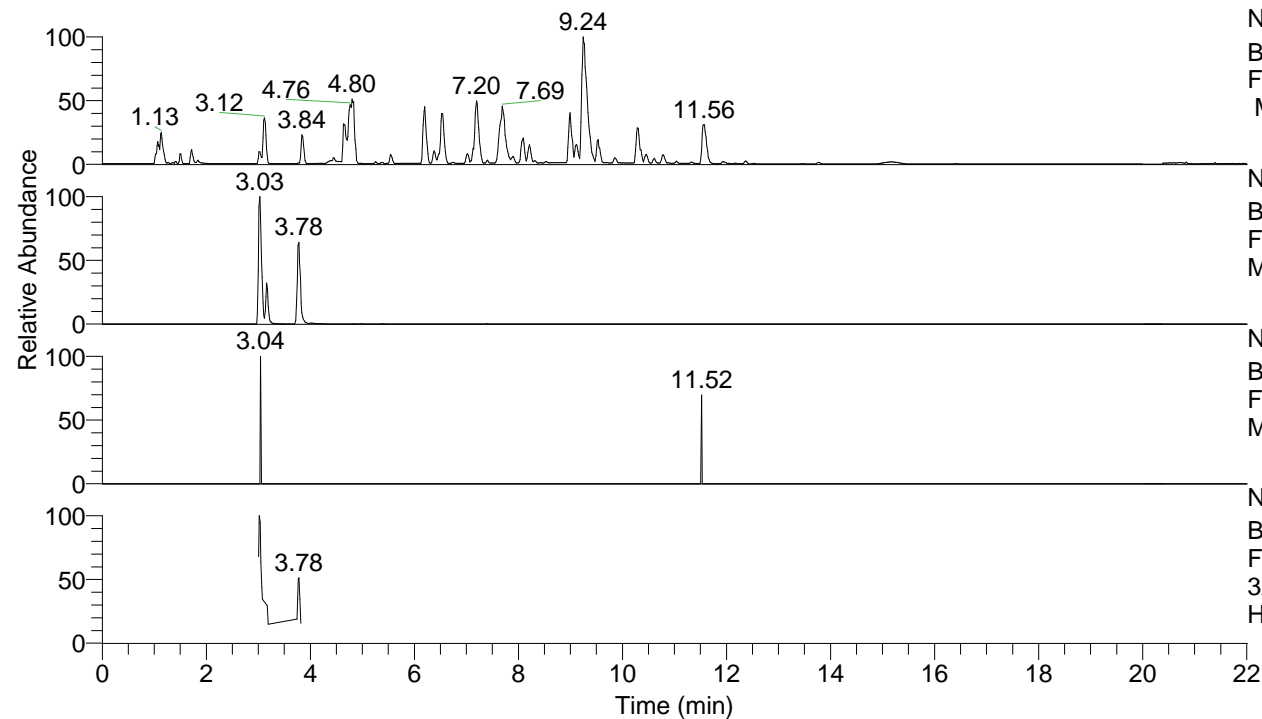


RT: 0.00 - 22.01



NL: 8.52E7  
 Base Peak m/z= 100.00000-1500.00000  
 F: FTMS + p ESI Full ms [100.00-1500.00]  
 MS Hcurta

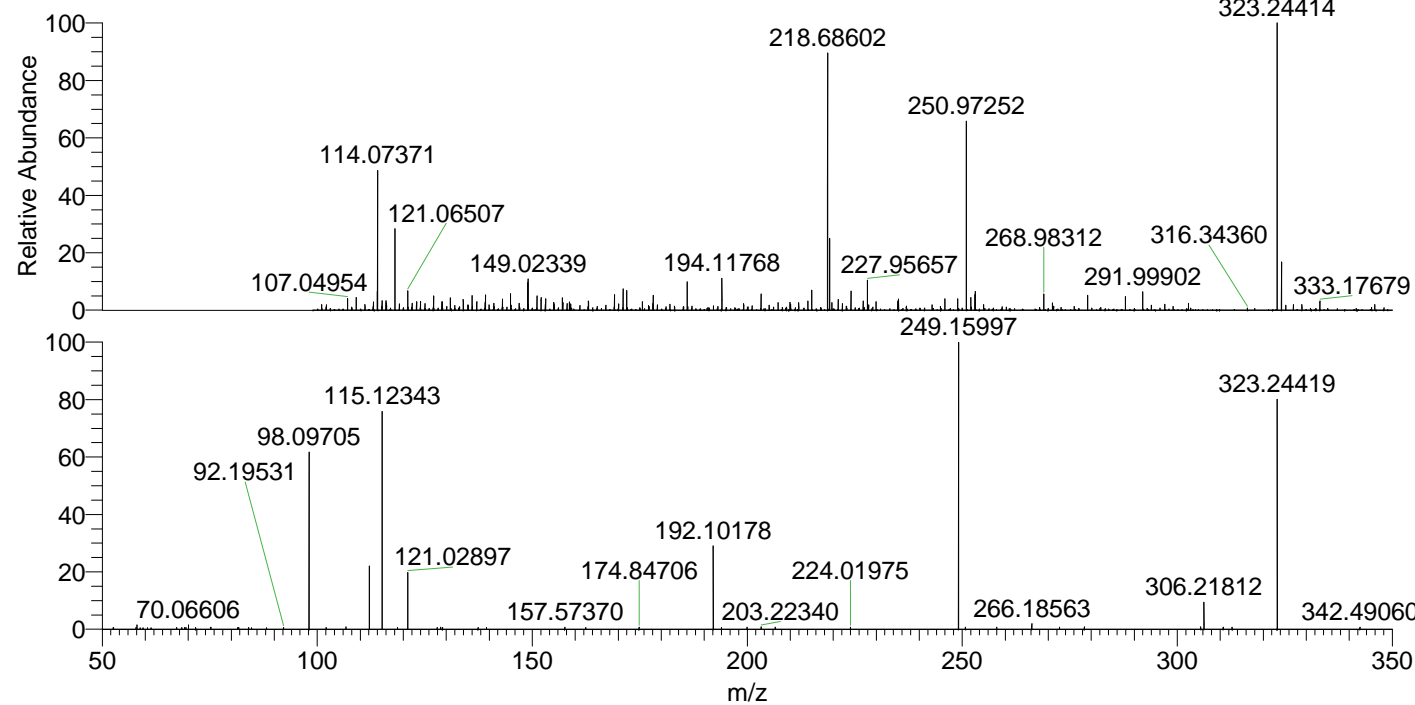
NL: 1.50E6  
 Base Peak m/z= 323.24308-323.24632 F:  
 FTMS + p ESI Full ms [100.00-1500.00]  
 MS Hcurta

NL: 1.71E3  
 Base Peak m/z= 162.12545-162.12707 F:  
 FTMS + p ESI Full ms [100.00-1500.00]  
 MS Hcurta

NL: 2.82E5  
 Base Peak m/z= 50.00000-1500.00000 F:  
 FTMS + p ESI d Full ms2  
 323.24@hcd35.00 [50.00-350.00] MS  
 Hcurta

Hcurta#1499-1520 RT: 3.74-3.80 AV: 5  
 F: FTMS + p ESI d Full ms2 323.24 ...  
 m/z= 50.00000-1000.00000

m/z	Intensity	Relative
52.58218	574.1	0.57
57.82477	606.5	0.60
58.06608	1540.8	1.53
60.56581	538.6	0.53
61.32938	517.5	0.51
67.30422	587.7	0.58
67.33833	559.6	0.55
68.49798	618.6	0.61
69.19814	579.0	0.57
69.45550	575.0	0.57
70.06606	1578.4	1.56
71.73589	584.8	0.58
75.21554	654.6	0.65
75.27182	738.8	0.73
81.54068	640.4	0.63
81.77945	602.5	0.60
84.08181	606.8	0.60
84.70247	531.5	0.53
88.19387	549.4	0.54
92.19531	627.3	0.62
98.09705	62333.9	61.80
102.07895	569.3	0.56
106.68566	842.9	0.84
112.11259	22054.0	21.87
115.12343	76168.6	75.52
118.65925	626.7	0.62
121.02897	20156.9	19.98
127.89917	605.4	0.60
128.70695	700.4	0.69
129.13853	577.5	0.57
137.40182	608.7	0.60
139.34119	624.2	0.62
157.57370	770.6	0.76
162.42006	644.9	0.64
174.84706	695.4	0.69
192.10178	29666.0	29.41
194.00806	687.0	0.68
199.98673	700.8	0.69
203.22340	858.9	0.85
206.50774	764.1	0.76
224.01975	730.7	0.72
249.13582	760.0	0.75
249.15997	100863.7	100.00
249.18127	2249.9	2.23
250.75133	782.7	0.78
258.02246	727.9	0.72
266.18563	1978.2	1.96
272.61784	784.0	0.78
278.41026	865.1	0.86
305.45726	791.6	0.78
306.21812	9534.9	9.45
310.70059	697.5	0.69
312.76769	750.6	0.74
323.24419	80288.3	79.60
342.49060	745.2	0.74



NL: 9.53E5  
 Hcurta#1513 RT: 3.78  
 AV: 1 T: FTMS + p ESI  
 Full lock ms  
 [100.00-1500.00]

NL: 1.00E5  
 Hcurta#1499-1529 RT:  
 3.74-3.80 AV: 5 F: FTMS  
 + p ESI d Full ms2  
 323.24@hcd35.00  
 [50.00-350.00]