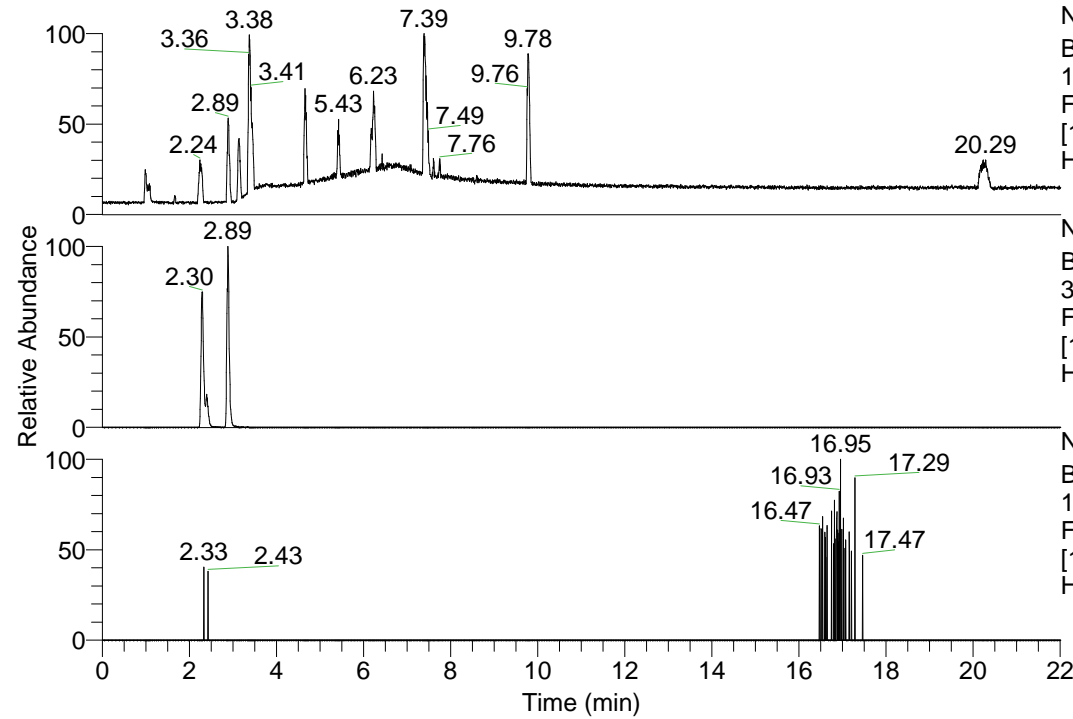


RT: 0.00 - 22.01



NL: 1.13E8  
Base Peak m/z=  
100.00000-1500.00000 F:  
FTMS + p ESI Full ms  
[100.00-1500.00] MS  
Hcurta\_HDX

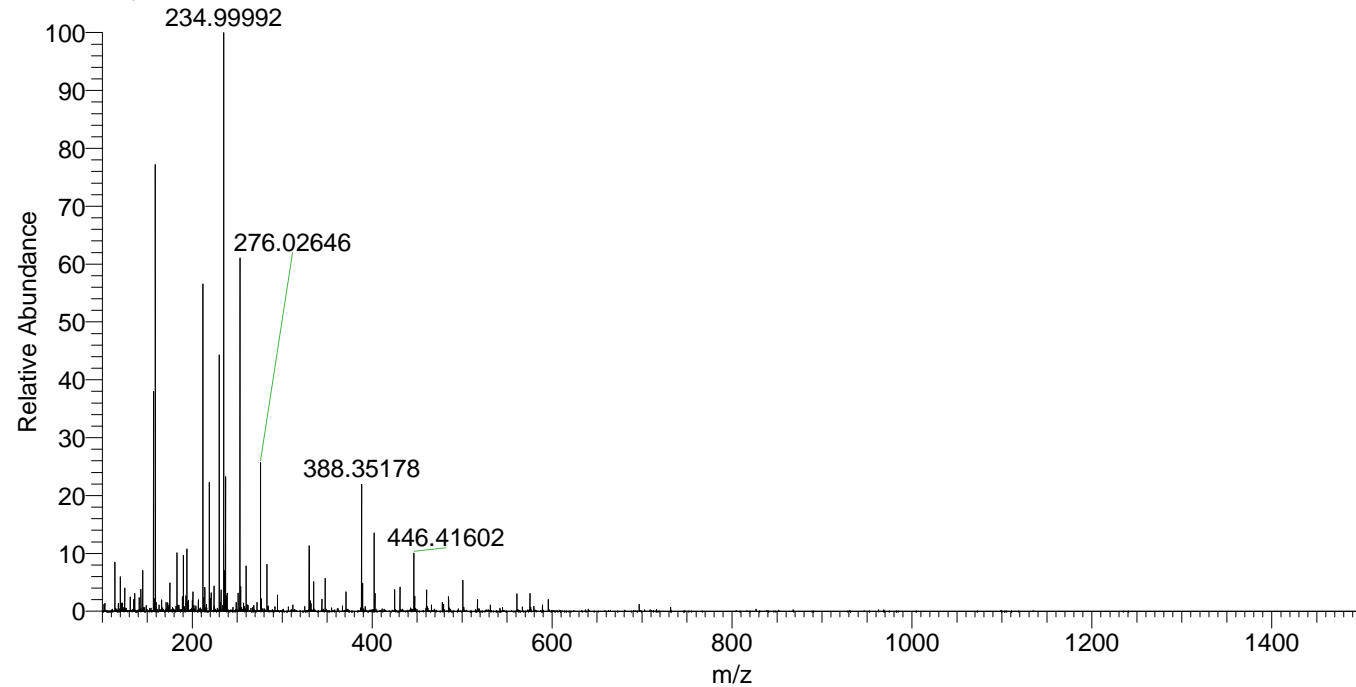
NL: 4.38E6  
Base Peak m/z=  
330.28699-330.29029 F:  
FTMS + p ESI Full ms  
[100.00-1500.00] MS  
Hcurta\_HDX

NL: 6.24E3  
Base Peak m/z=  
166.15054-166.15220 F:  
FTMS + p ESI Full ms  
[100.00-1500.00] MS  
Hcurta\_HDX

Hcurta\_HDX#367 RT: 2.40  
T: FTMS + p ESI Full ms [100.00-1500.00]  
m/z= 330.00000-331.00000

m/z	Intensity	Relative	Delta (ppm)	Composition
330.28769	799358.8	100.00	-1.21	C <sub>17</sub> H <sub>24</sub> <sup>2</sup> H <sub>7</sub> O <sub>2</sub> N <sub>4</sub>
			3.47	C <sub>17</sub> H <sub>22</sub> <sup>2</sup> H <sub>8</sub> O <sub>2</sub> N <sub>4</sub>

Hcurta\_HDX #367 RT: 2.40 AV: 1 NL: 7.58E6  
T: FTMS + p ESI Full ms [100.00-1500.00]



Hcurta\_HDX #367 RT: 2.40 AV: 1 NL: 8.59E5  
T: FTMS + p ESI Full ms [100.00-1500.00]

