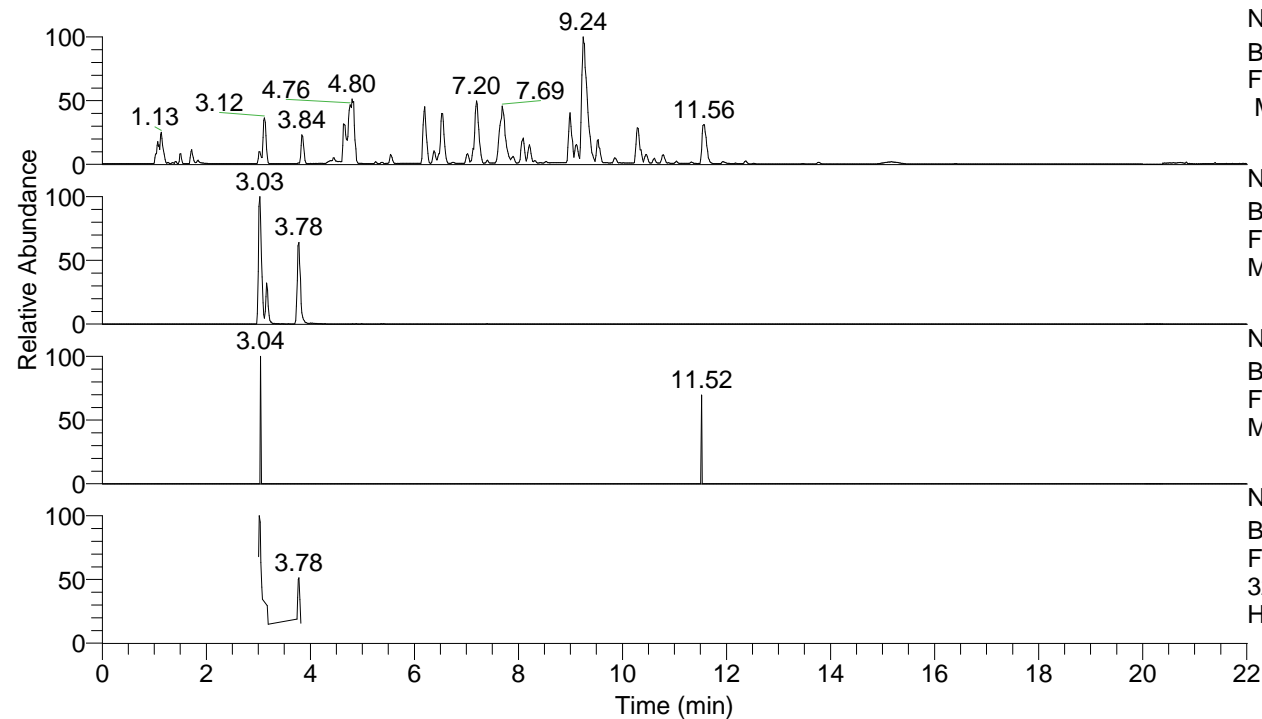


RT: 0.00 - 22.01



NL: 8.52E7
 Base Peak m/z= 100.00000-1500.00000
 F: FTMS + p ESI Full ms [100.00-1500.00]
 MS Hcurta

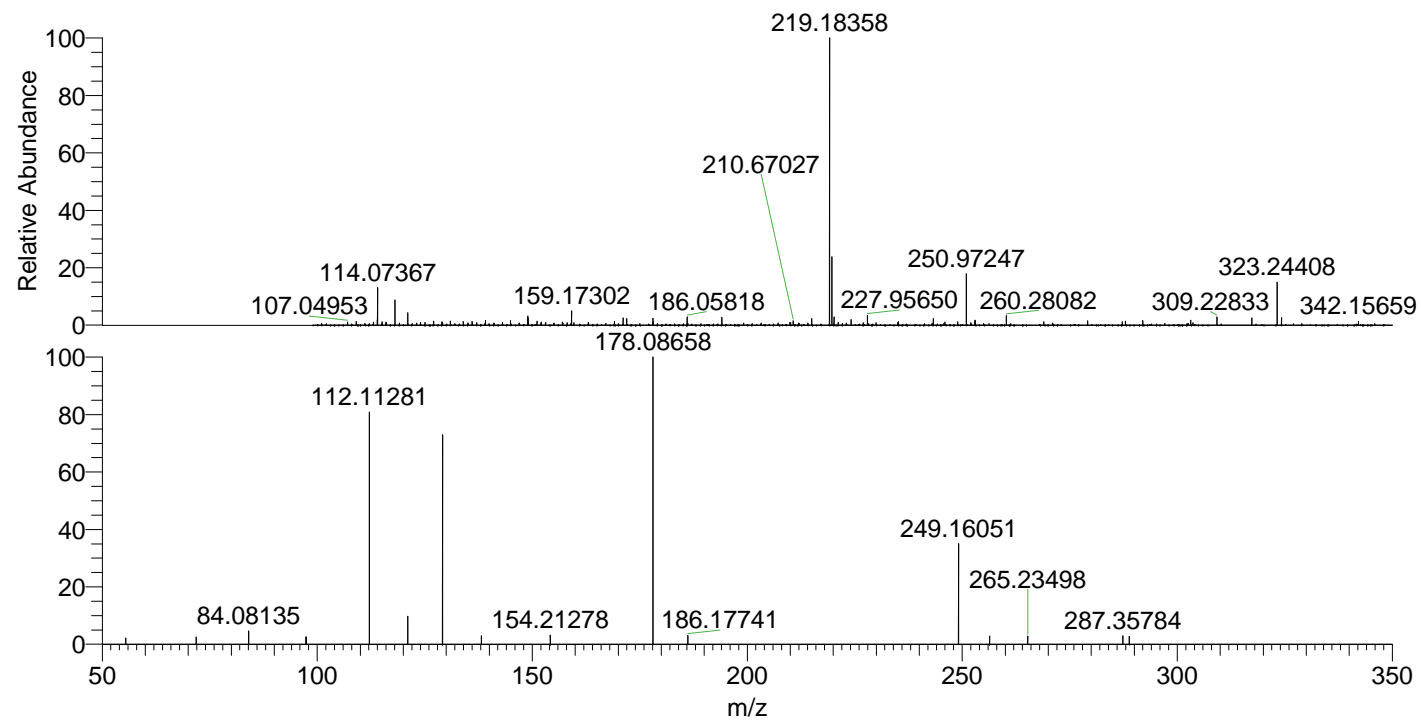
NL: 1.50E6
 Base Peak m/z= 323.24308-323.24632 F:
 FTMS + p ESI Full ms [100.00-1500.00]
 MS Hcurta

NL: 1.71E3
 Base Peak m/z= 162.12545-162.12707 F:
 FTMS + p ESI Full ms [100.00-1500.00]
 MS Hcurta

NL: 2.82E5
 Base Peak m/z= 50.00000-1500.00000 F:
 FTMS + p ESI d Full ms2
 323.24@hcd35.00 [50.00-350.00] MS
 Hcurta

Hcurta#1271-1278 RT: 3.17-3.19 AV: 2
 F: FTMS + p ESI d Full ms2 323.24 ...
 m/z= 50.00000-1000.00000

m/z	Intensity	Relative
55.48522	1327.5	2.22
71.84895	1511.3	2.52
84.08135	2761.2	4.61
97.39249	1586.7	2.65
97.42950	1436.3	2.40
112.11281	48319.7	80.71
121.02916	5883.5	9.83
129.13888	45434.8	75.90
138.15386	1820.8	3.04
154.21278	1896.4	3.17
178.08658	59865.4	100.00
186.17741	1809.0	3.02
249.16051	21047.1	35.16
256.36285	1701.7	2.84
265.23498	1739.1	2.90
287.35784	1767.8	2.95
288.85645	1656.1	2.77



NL: 3.08E6
 Hcurta#1267 RT: 3.16
 AV: 1 T: FTMS + p ESI
 Full lock ms
 [100.00-1500.00]

NL: 5.97E4
 Hcurta#1265-1280 RT:
 3.17-3.19 AV: 2 F: FTMS
 + p ESI d Full ms2
 323.24@hcd35.00
 [50.00-350.00]