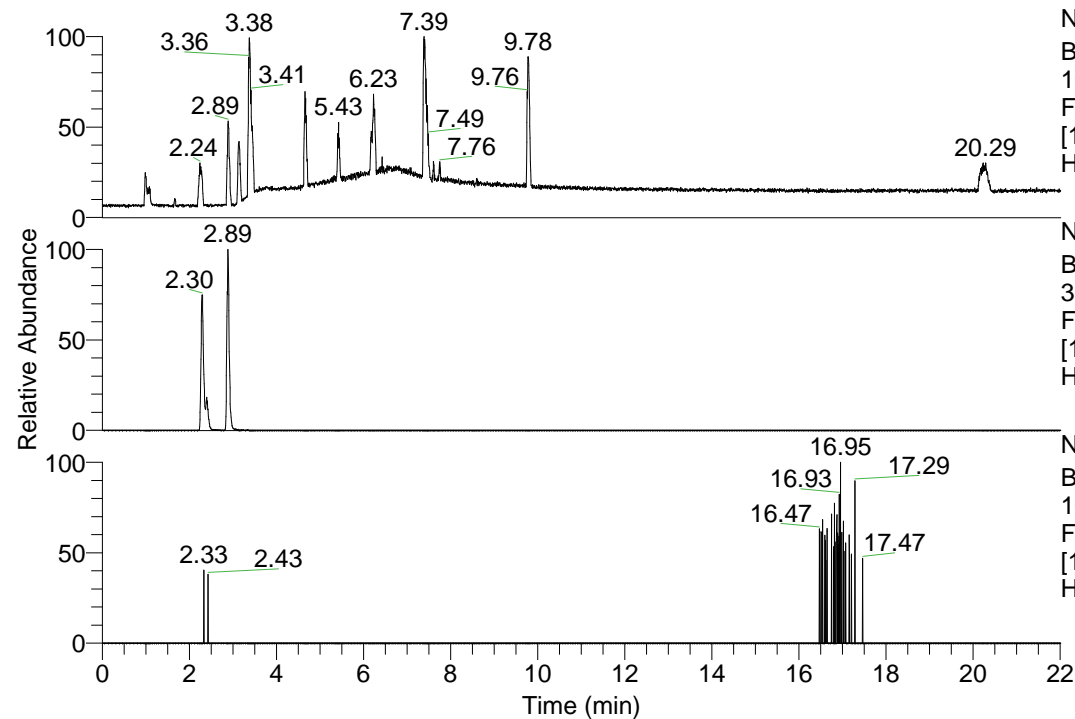


RT: 0.00 - 22.01



NL: 1.13E8
 Base Peak m/z=
 100.00000-1500.00000 F:
 FTMS + p ESI Full ms
 [100.00-1500.00] MS
 Hcurta_HDX

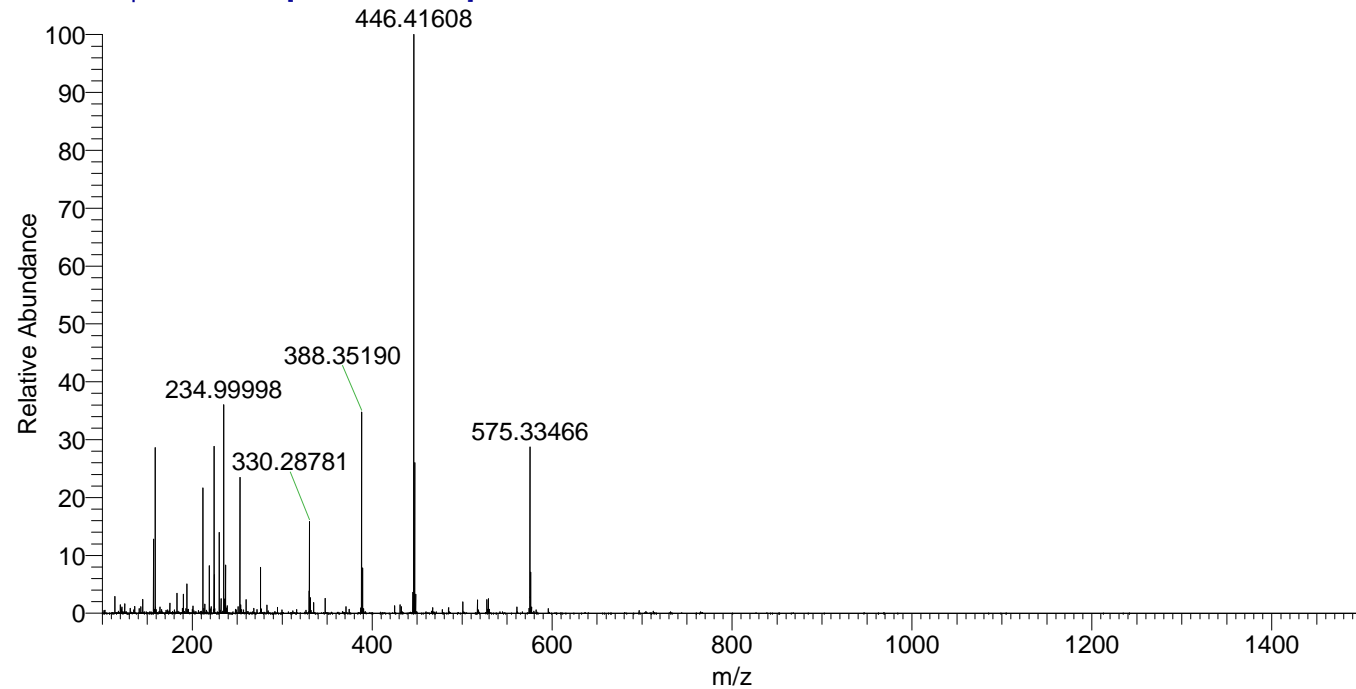
NL: 4.38E6
 Base Peak m/z=
 330.28699-330.29029 F:
 FTMS + p ESI Full ms
 [100.00-1500.00] MS
 Hcurta_HDX

NL: 6.24E3
 Base Peak m/z=
 166.15054-166.15220 F:
 FTMS + p ESI Full ms
 [100.00-1500.00] MS
 Hcurta_HDX

Hcurta_HDX#352 RT: 2.30
 T: FTMS + p ESI Full ms [100.00-1500.00]
 m/z= 330.00000-331.00000

m/z	Intensity	Relative	Delta (ppm)	Composition
330.28781	3265092.8	100.00	-0.84	C ₁₇ H ₂₄ ² H ₇ O ₂ N ₄
			3.84	C ₁₇ H ₂₂ ² H ₈ O ₂ N ₄

Hcurta_HDX #352 RT: 2.30 AV: 1 NL: 2.06E7
 T: FTMS + p ESI Full ms [100.00-1500.00]



Hcurta_HDX #352 RT: 2.30 AV: 1 NL: 3.26E6
 T: FTMS + p ESI Full ms [100.00-1500.00]

