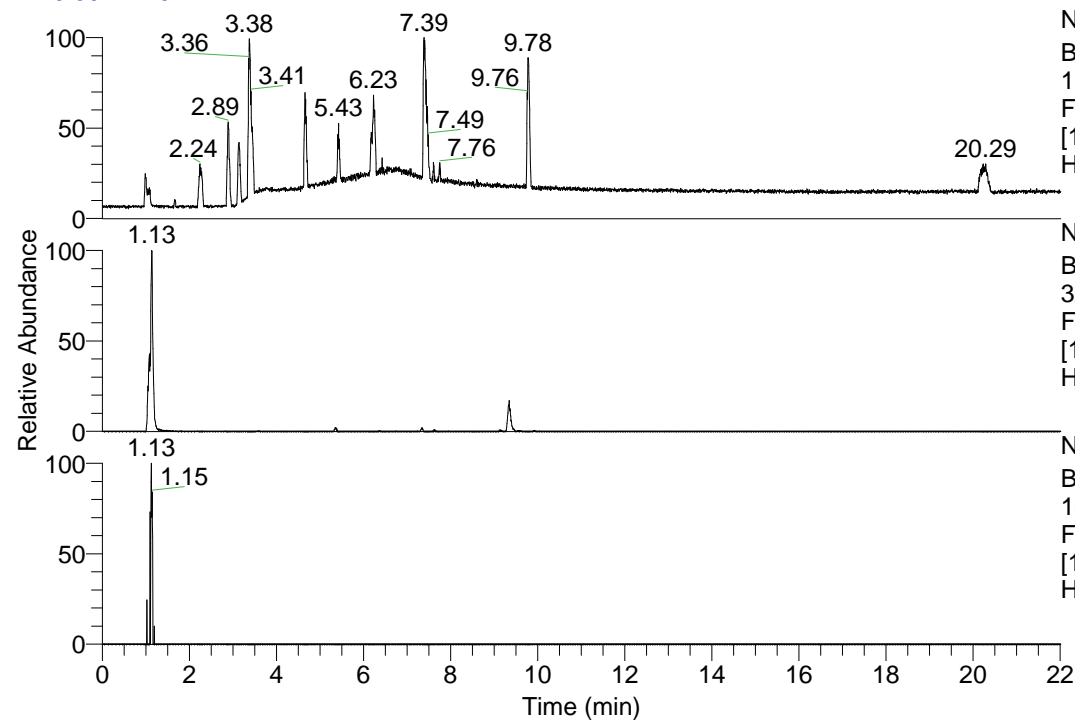


RT: 0.00 - 22.01



NL: 1.13E8
Base Peak m/z=
100.00000-1500.00000 F:
FTMS + p ESI Full ms
[100.00-1500.00] MS
Hcurta_HDX

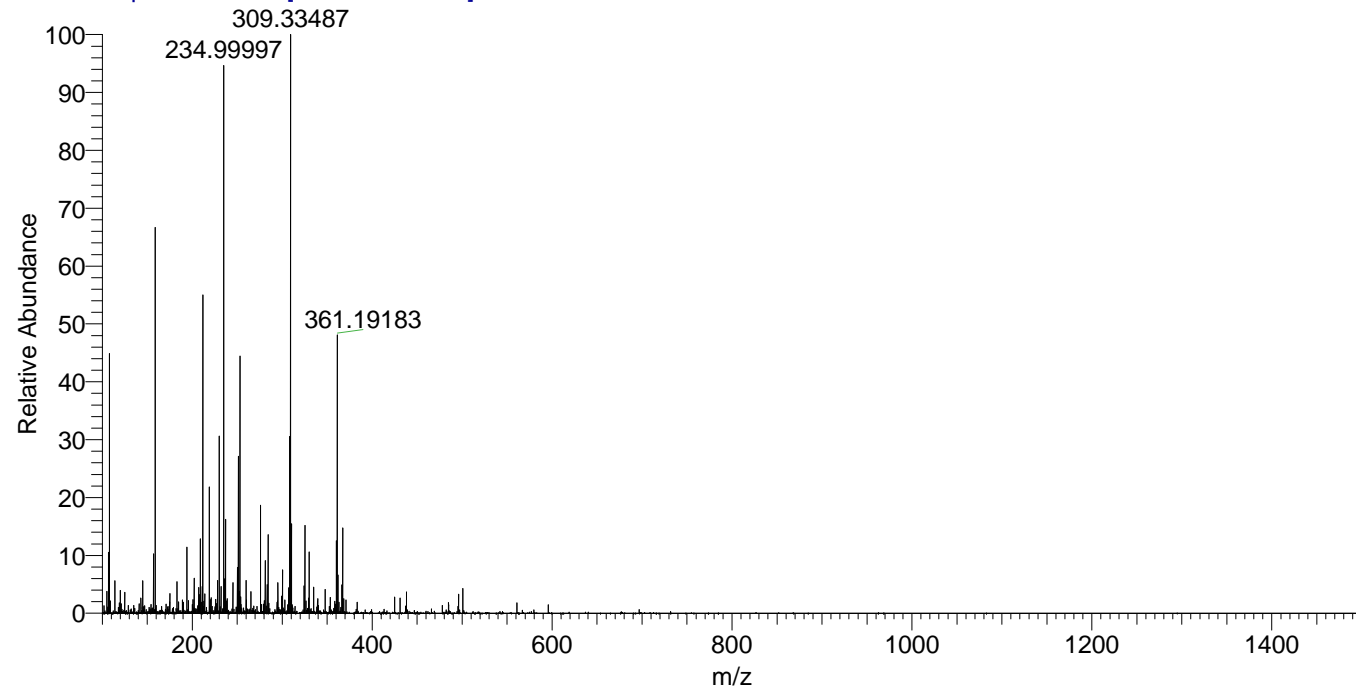
NL: 1.51E6
Base Peak m/z=
325.32921-325.33247 F:
FTMS + p ESI Full ms
[100.00-1500.00] MS
Hcurta_HDX

NL: 2.36E4
Base Peak m/z=
163.67165-163.67329 F:
FTMS + p ESI Full ms
[100.00-1500.00] MS
Hcurta_HDX

Hcurta_HDX#172 RT: 1.13
T: FTMS + p ESI Full ms [100.00-1500.00]
m/z= 325.00000-326.00000

m/z	Intensity	Relative	Delta (ppm)	Composition
325.32990	1327412.9	100.00	-1.21	C ₁₅ H ₂₉ ² H ₇ O ₂ N ₅
			3.55	C ₁₅ H ₂₇ ² H ₈ O ₂ N ₅

Hcurta_HDX #172 RT: 1.13 AV: 1 NL: 8.36E6
T: FTMS + p ESI Full ms [100.00-1500.00]



Hcurta_HDX #172 RT: 1.13 AV: 1 NL: 1.27E6
T: FTMS + p ESI Full ms [100.00-1500.00]

