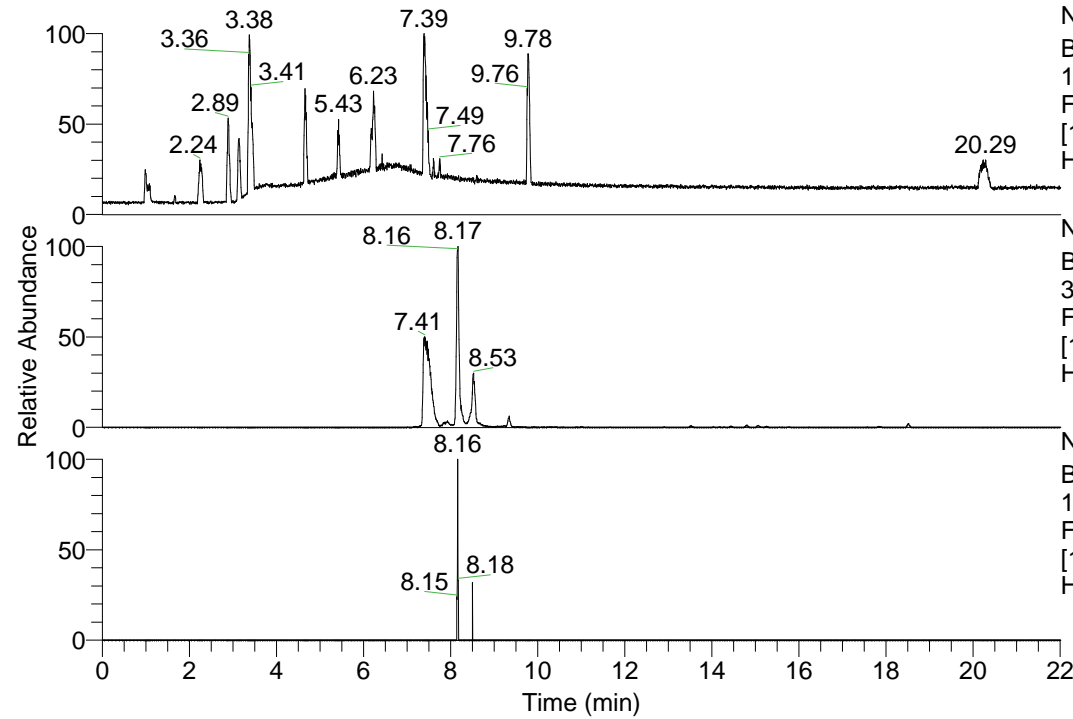


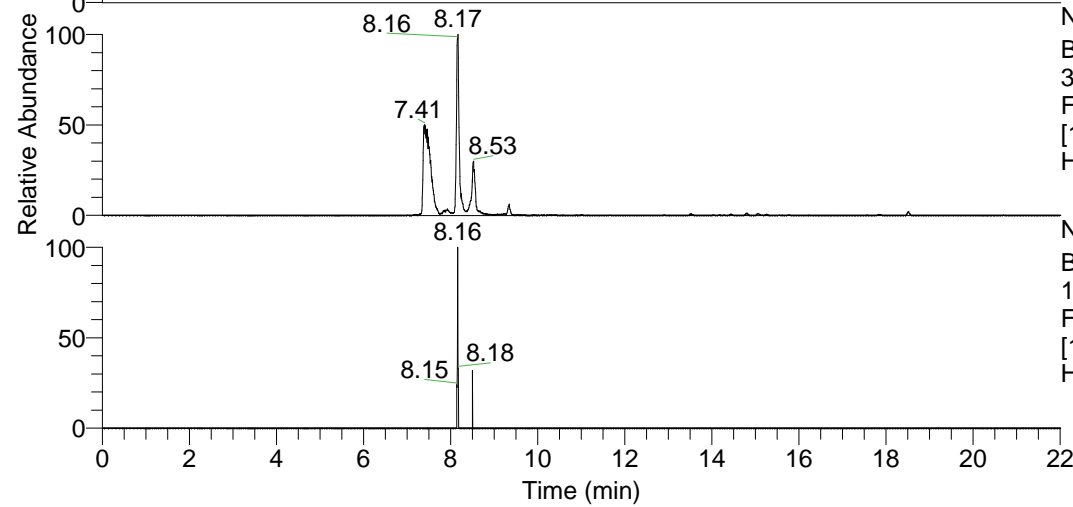
RT: 0.00 - 22.01



NL: 1.13E8
Base Peak m/z=
100.00000-1500.00000 F:
FTMS + p ESI Full ms
[100.00-1500.00] MS
Hcurta_HDX

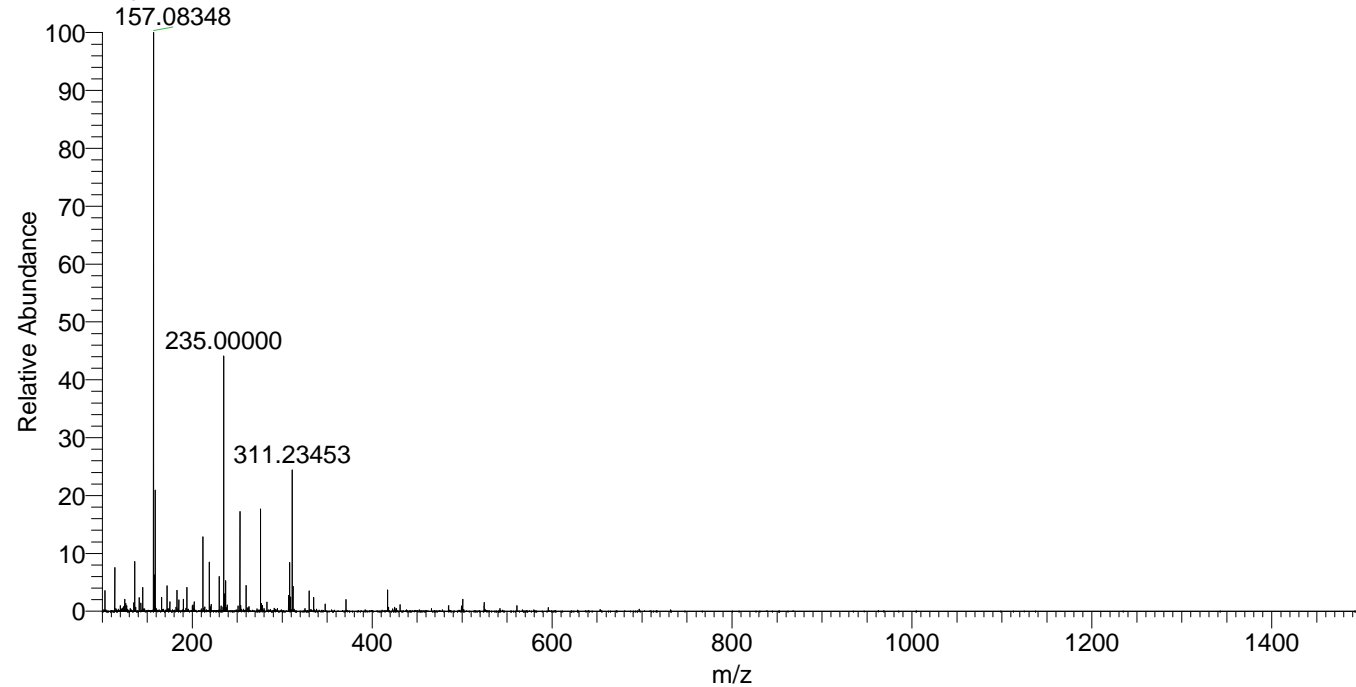
Hcurta_HDX#1321 RT: 8.17
T: FTMS + p ESI Full ms [100.00-1500.00]
m/z= 311.00000-312.00000

m/z	Intensity	Relative	Delta (ppm)	Composition
311.23453	5783282.5	100.00	-1.08	C ₁₆ H ₁₉ ² H ₆ O ₂ N ₄
			3.90	C ₁₆ H ₁₇ ² H ₇ O ₂ N ₄



NL: 5.78E6
Base Peak m/z=
311.23385-311.23697 F:
FTMS + p ESI Full ms
[100.00-1500.00] MS
Hcurta_HDX

Hcurta_HDX #1321 RT: 8.17 AV: 1 NL: 2.28E7
T: FTMS + p ESI Full ms [100.00-1500.00]



Hcurta_HDX #1321 RT: 8.17 AV: 1 NL: 5.56E6
T: FTMS + p ESI Full ms [100.00-1500.00]

