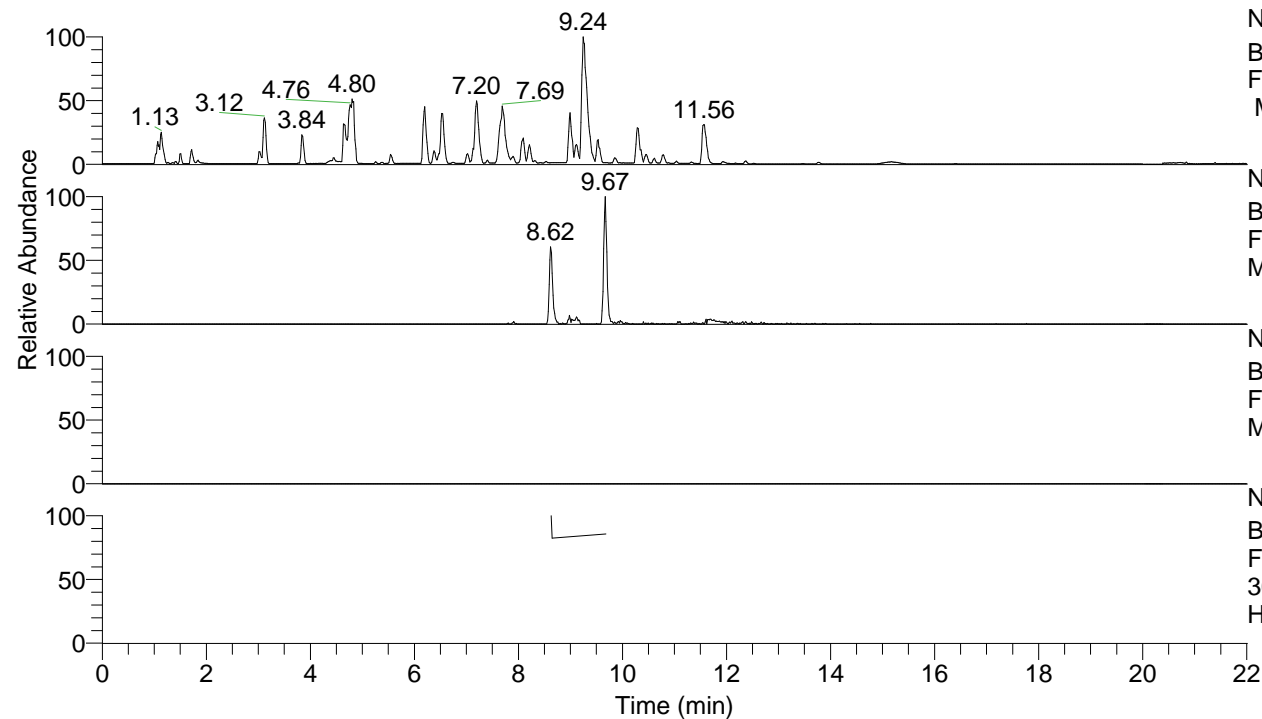


RT: 0.00 - 22.01



NL: 8.52E7
 Base Peak m/z= 100.00000-1500.00000
 F: FTMS + p ESI Full ms [100.00-1500.00]
 MS Hcurta

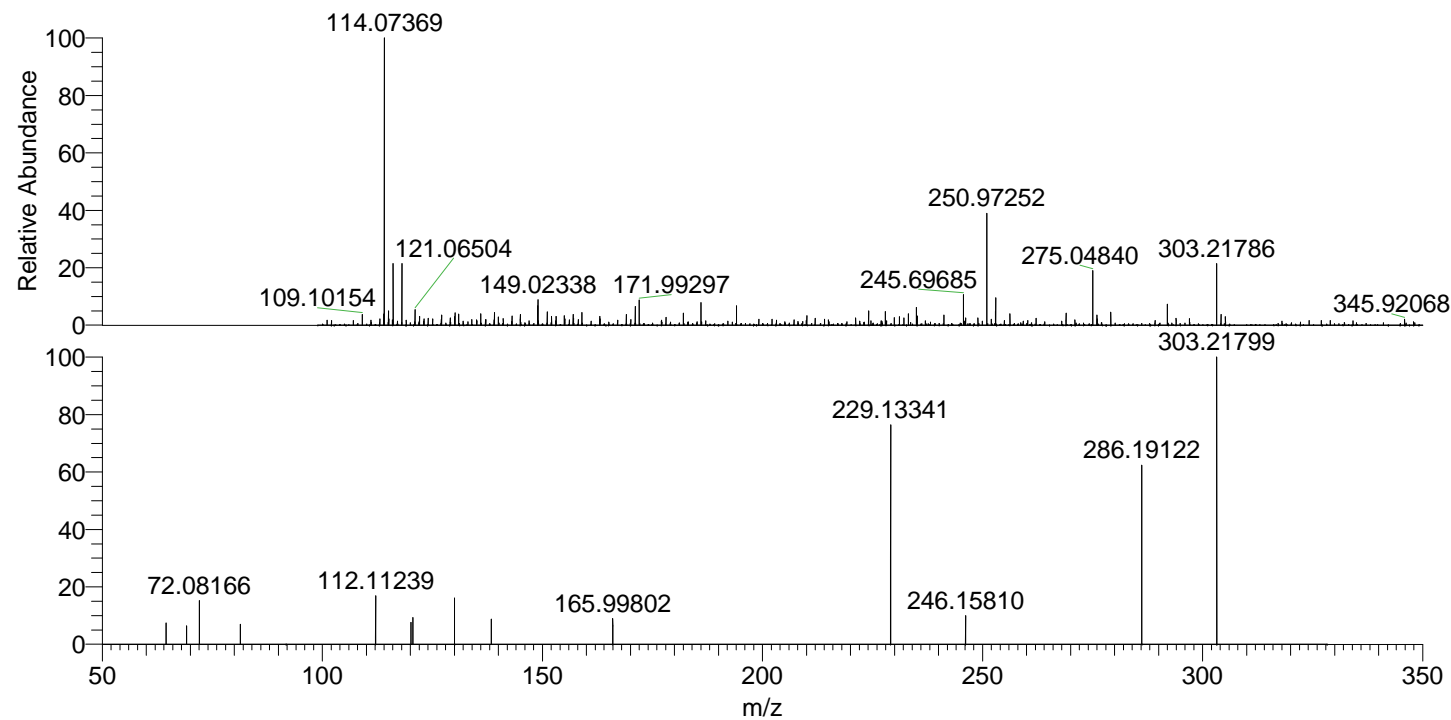
NL: 2.40E5
 Base Peak m/z= 303.21697-303.22001 F:
 FTMS + p ESI Full ms [100.00-1500.00]
 MS Hcurta

NL: 0
 Base Peak m/z= 152.11240-152.11392 F:
 FTMS + p ESI Full ms [100.00-1500.00]
 MS Hcurta

NL: 4.80E4
 Base Peak m/z= 50.00000-1500.00000 F:
 FTMS + p ESI d Full ms2
 303.22@hcd35.00 [50.00-325.00] MS
 Hcurta

Hcurta#3887 RT: 9.68
 F: FTMS + p ESI d Full ms2 303.22 ...
 m/z= 50.00000-1000.00000

m/z	Intensity	Relative
64.53950	2983.8	7.24
69.15136	2554.4	6.20
72.08166	6006.7	14.58
81.39918	2738.2	6.65
112.11239	6804.7	16.52
120.11909	3072.5	7.46
120.56814	3760.6	9.13
130.06512	6377.0	15.48
138.41476	3560.0	8.64
165.99802	3727.0	9.05
229.13341	30398.9	73.79
246.15810	4179.2	10.14
286.19122	24818.7	60.25
303.21799	41195.8	100.00



NL: 1.06E6
 Hcurta#3883 RT: 9.67
 AV: 1 T: FTMS + p
 ESI Full lock ms
 [100.00-1500.00]

NL: 3.95E4
 Hcurta#3829 RT: 9.68
 AV: 1 F: FTMS + p
 ESI d Full ms2
 303.22@hcd35.00
 [50.00-325.00]