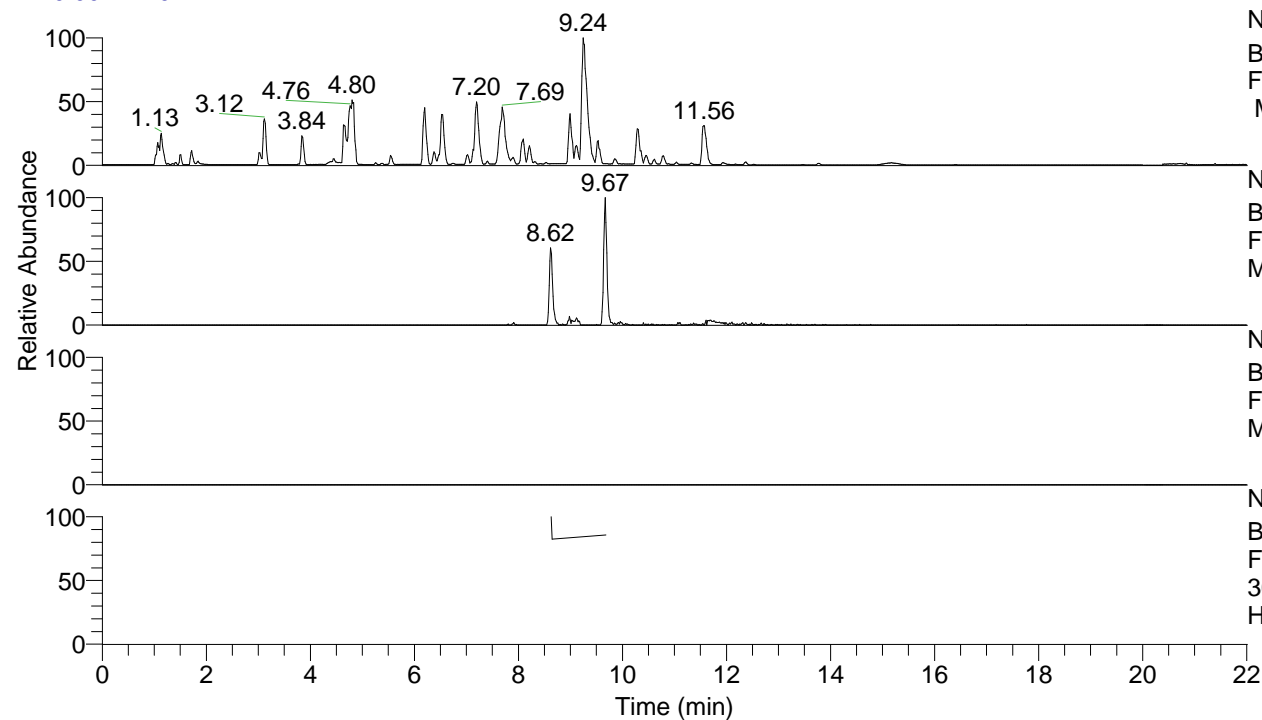


RT: 0.00 - 22.01



NL: 8.52E7
 Base Peak m/z= 100.00000-1500.00000
 F: FTMS + p ESI Full ms [100.00-1500.00]
 MS Hcurta

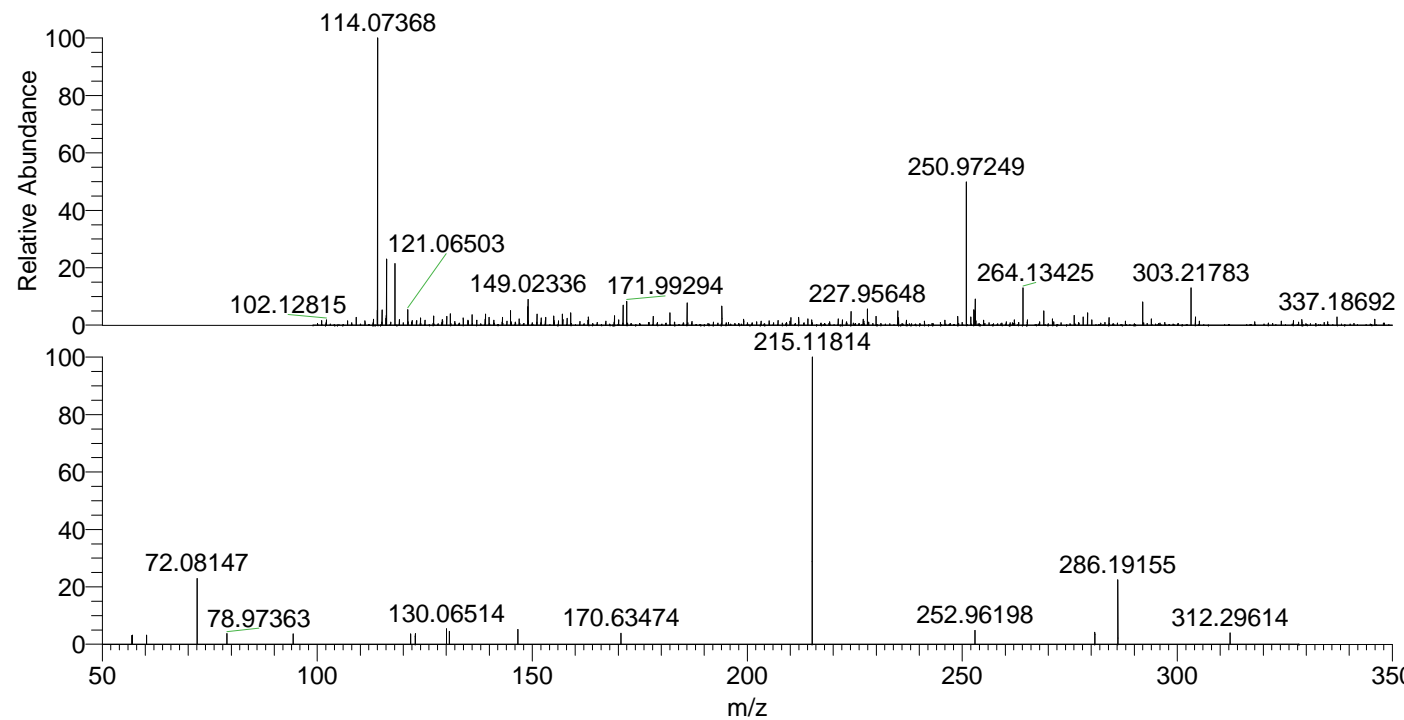
NL: 2.40E5
 Base Peak m/z= 303.21697-303.22001 F:
 FTMS + p ESI Full ms [100.00-1500.00]
 MS Hcurta

NL: 0
 Base Peak m/z= 152.11240-152.11392 F:
 FTMS + p ESI Full ms [100.00-1500.00]
 MS Hcurta

NL: 4.80E4
 Base Peak m/z= 50.00000-1500.00000 F:
 FTMS + p ESI d Full ms2
 303.22@hcd35.00 [50.00-325.00] MS
 Hcurta

Hcurta#3462-3468 RT: 8.63-8.65 AV: 2
 F: FTMS + p ESI d Full ms2 303.22 ...
 m/z= 50.00000-1000.00000

m/z	Intensity	Relative
56.91388	1243.0	2.94
57.03346	1318.7	3.12
60.32109	1283.1	3.03
72.08147	9655.9	22.83
72.09753	1601.2	3.79
78.97363	1583.0	3.74
94.37933	1520.6	3.60
121.70730	1510.8	3.57
122.80537	1589.1	3.76
130.06514	2216.7	5.24
130.75013	1858.2	4.39
146.64801	2205.1	5.21
170.63474	1578.2	3.73
215.11814	42294.3	100.00
252.96198	1992.6	4.71
280.83983	1726.6	4.08
286.19155	9262.2	21.90
312.29614	1627.0	3.85



NL: 1.06E6
 Hcurta#3457 RT: 8.62
 AV: 1 T: FTMS + p ESI
 Full lock ms
 [100.00-1500.00]

NL: 4.09E4
 Hcurta#3418-3516 RT:
 8.63-8.65 AV: 2 F: FTMS
 + p ESI d Full ms2
 303.22@hcd35.00
 [50.00-325.00]