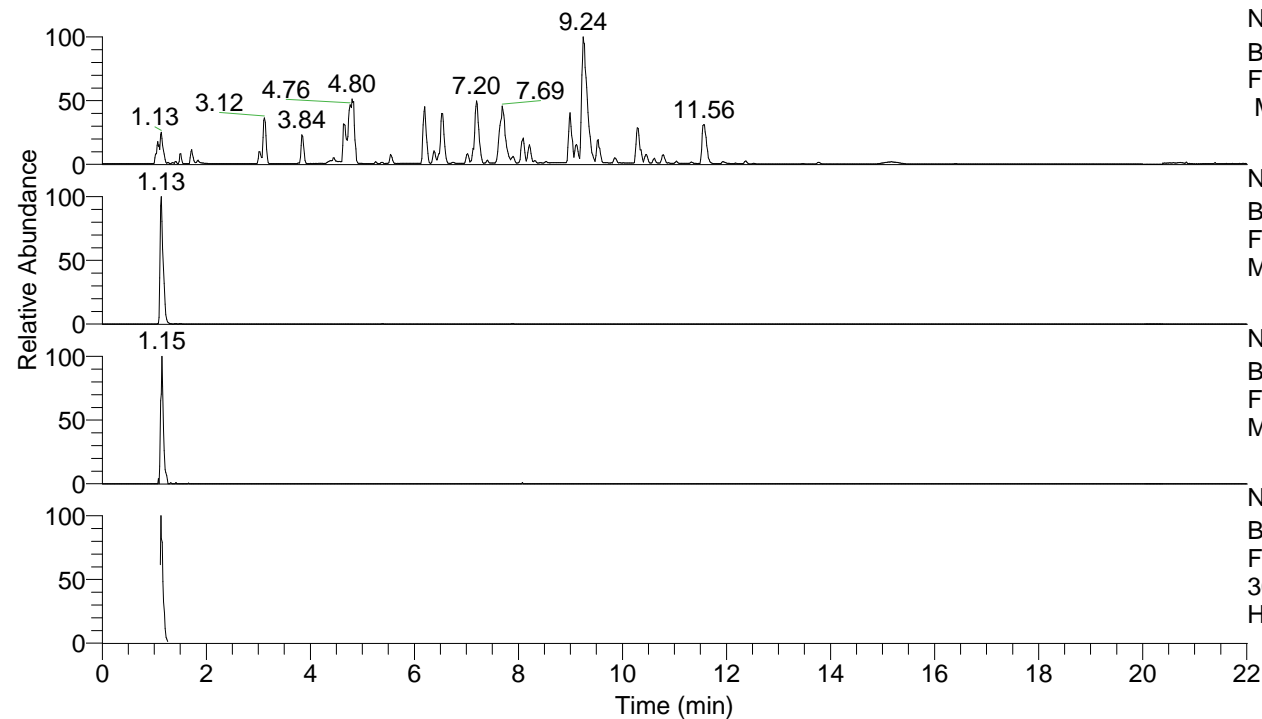


RT: 0.00 - 22.01



NL: 8.52E7
 Base Peak m/z= 100.00000-1500.00000
 F: FTMS + p ESI Full ms [100.00-1500.00]
 MS Hcurta

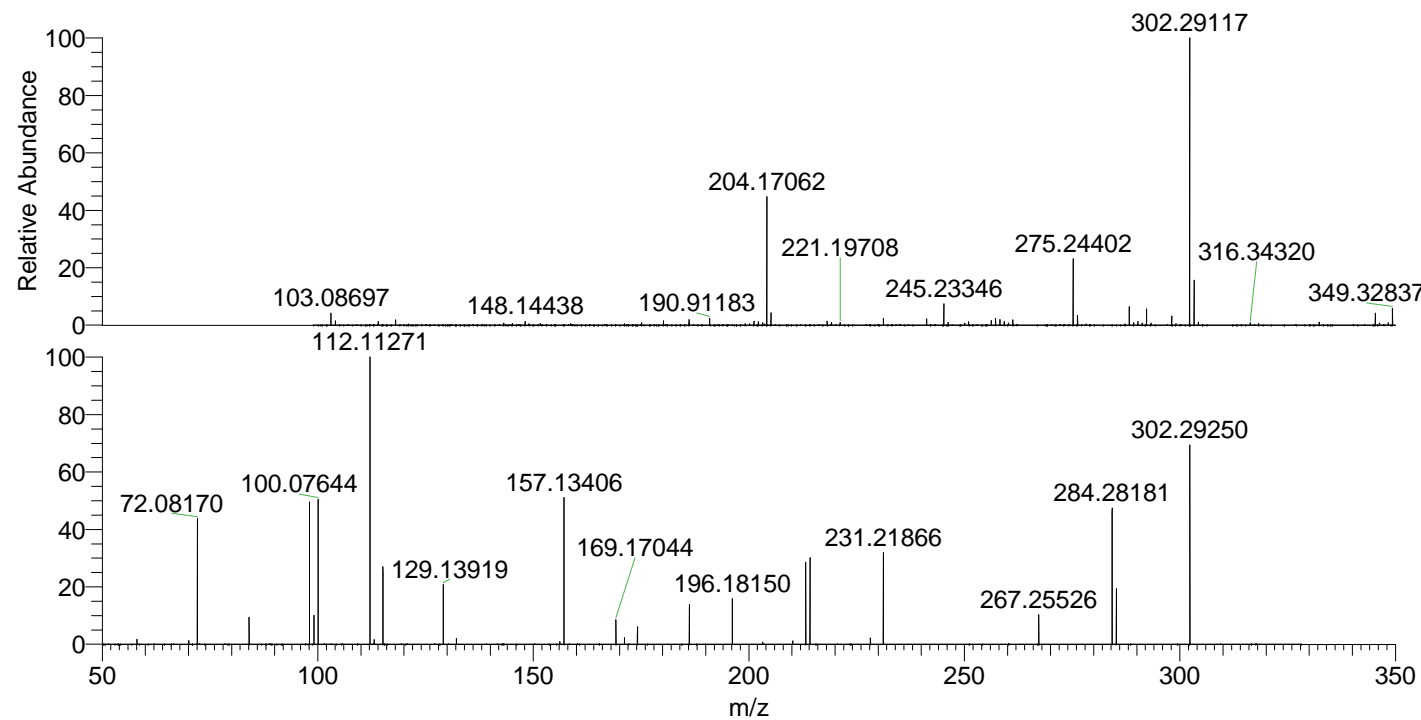
NL: 2.15E7
 Base Peak m/z= 302.29048-302.29350 F:
 FTMS + p ESI Full ms [100.00-1500.00]
 MS Hcurta

NL: 1.88E5
 Base Peak m/z= 151.64915-151.65067 F:
 FTMS + p ESI Full ms [100.00-1500.00]
 MS Hcurta

NL: 1.99E6
 Base Peak m/z= 50.00000-1500.00000 F:
 FTMS + p ESI d Full ms2
 302.29@hcd35.00 [50.00-325.00] MS
 Hcurta

Hcurta#448-506 RT: 1.11-1.26 AV: 11
 F: FTMS + p ESI d Full ms2 302.29 ...
 m/z= 50.00000-1000.00000

m/z	Intensity	Relative
58.06618	13383.3	1.70
70.06611	9966.7	1.27
72.08170	339928.8	43.15
84.08160	73990.8	9.39
98.09717	384088.3	48.75
99.09247	78802.5	10.00
100.07644	403228.9	51.18
100.08306	5086.3	0.65
112.11271	787809.4	100.00
113.10787	12633.3	1.60
115.12359	212322.8	26.95
129.10286	11734.3	1.49
129.13919	161199.7	20.46
132.15009	16328.0	2.07
156.15010	7208.5	0.92
157.13406	399873.6	50.76
169.17044	66461.9	8.44
171.14982	18070.9	2.29
174.16097	47072.8	5.98
186.19720	110641.4	14.04
196.18150	127426.9	16.17
203.22431	5982.2	0.76
210.19722	8796.2	1.12
213.20824	222824.5	28.28
214.19217	235269.9	29.86
228.20787	17675.0	2.24
231.21866	247305.0	31.39
267.25526	79788.4	10.13
284.28181	378120.4	48.00
285.26582	154266.4	19.58
302.29250	543599.8	69.00



NL: 2.15E7
 Hcurta#457 RT: 1.13
 AV: 1 T: FTMS + p ESI
 Full ms [100.00-1500.00]

NL: 7.73E5
 Hcurta#394-576 RT:
 1.11-1.26 AV: 11 F:
 FTMS + p ESI d Full ms2
 302.29@hcd35.00
 [50.00-325.00]