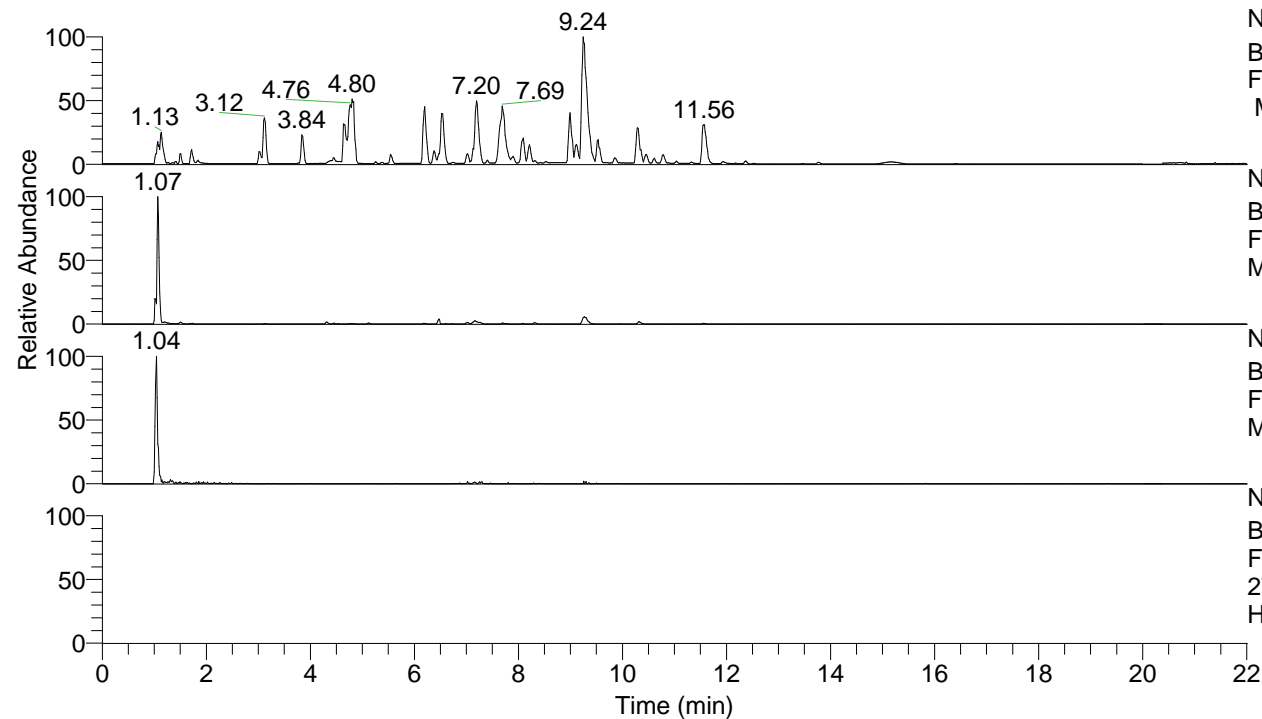


RT: 0.00 - 22.01



NL: 8.52E7
 Base Peak m/z= 100.00000-1500.00000
 F: FTMS + p ESI Full ms [100.00-1500.00]
 MS Hcurta

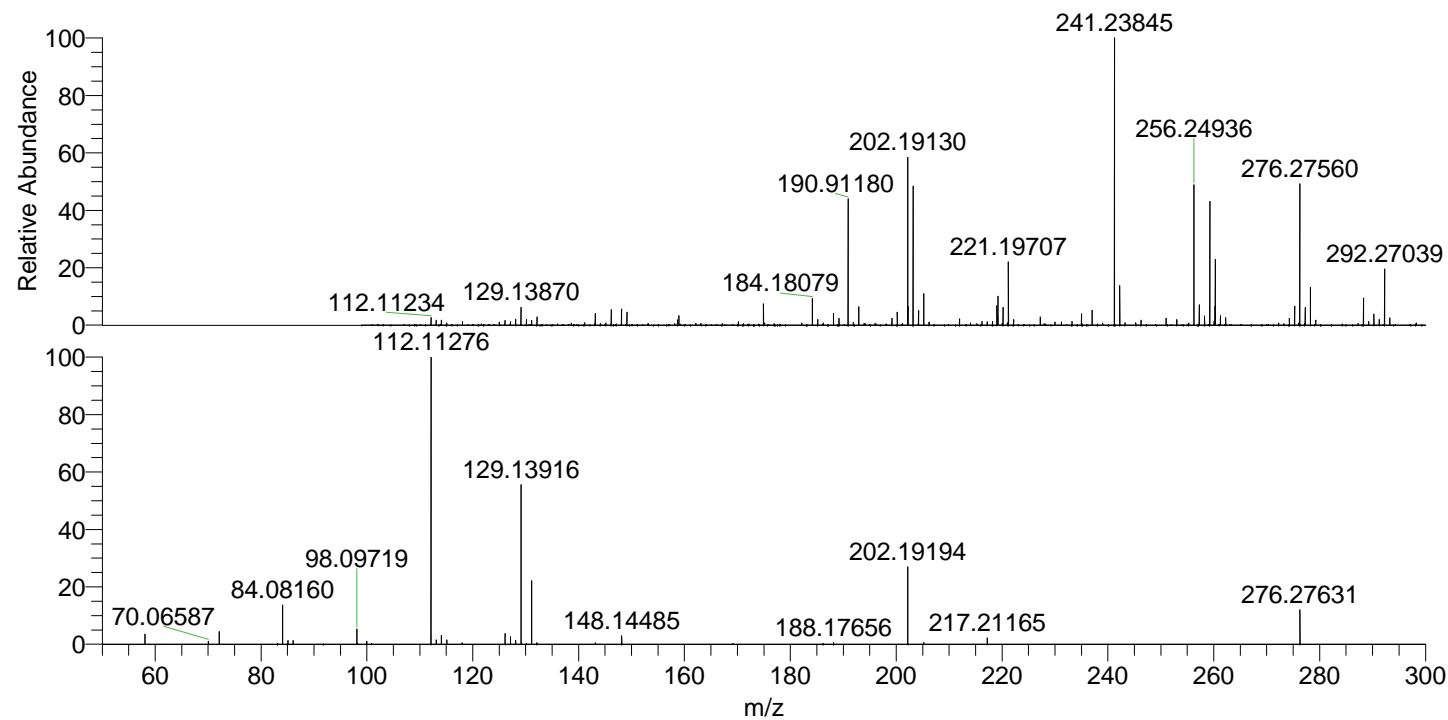
NL: 7.55E6
 Base Peak m/z= 276.27496-276.27772 F:
 FTMS + p ESI Full ms [100.00-1500.00]
 MS Hcurta

NL: 3.58E5
 Base Peak m/z= 138.64139-138.64277 F:
 FTMS + p ESI Full ms [100.00-1500.00]
 MS Hcurta

NL: 1.63E6
 Base Peak m/z= 50.00000-1500.00000 F:
 FTMS + p ESI d Full ms2
 276.28@hcd35.00 [50.00-300.00] MS
 Hcurta

Hcurta#431 RT: 1.08
 F: FTMS + p ESI d Full ms2 276.28@h ...
 m/z= 50.00000-1000.00000

m/z	Intensity	Relative
58.06612	55895.0	3.43
70.06587	16149.2	0.99
72.08174	69433.0	4.27
84.08160	226433.5	13.91
85.07680	21150.9	1.30
86.06087	20506.3	1.26
98.09719	82843.5	5.09
99.98784	16586.2	1.02
112.11276	1627526.9	100.00
113.10815	25078.3	1.54
114.09171	47562.3	2.92
115.12340	23530.0	1.45
126.12828	58932.2	3.62
127.13178	41666.9	2.56
128.10771	22140.4	1.36
129.13916	878151.4	53.96
131.11838	354047.1	21.75
132.12238	8562.4	0.53
148.14485	46300.2	2.84
188.17656	8535.5	0.52
202.19194	429467.5	26.39
205.20346	9033.9	0.56
217.21165	35027.1	2.15
276.27631	189698.5	11.66



NL: 1.53E7
 Hcurta#427 RT: 1.07
 AV: 1 T: FTMS + p
 ESI Full ms
 [100.00-1500.00]

NL: 1.57E6
 Hcurta#334 RT: 1.08
 AV: 1 F: FTMS + p
 ESI d Full ms2
 276.28@hcd35.00
 [50.00-300.00]