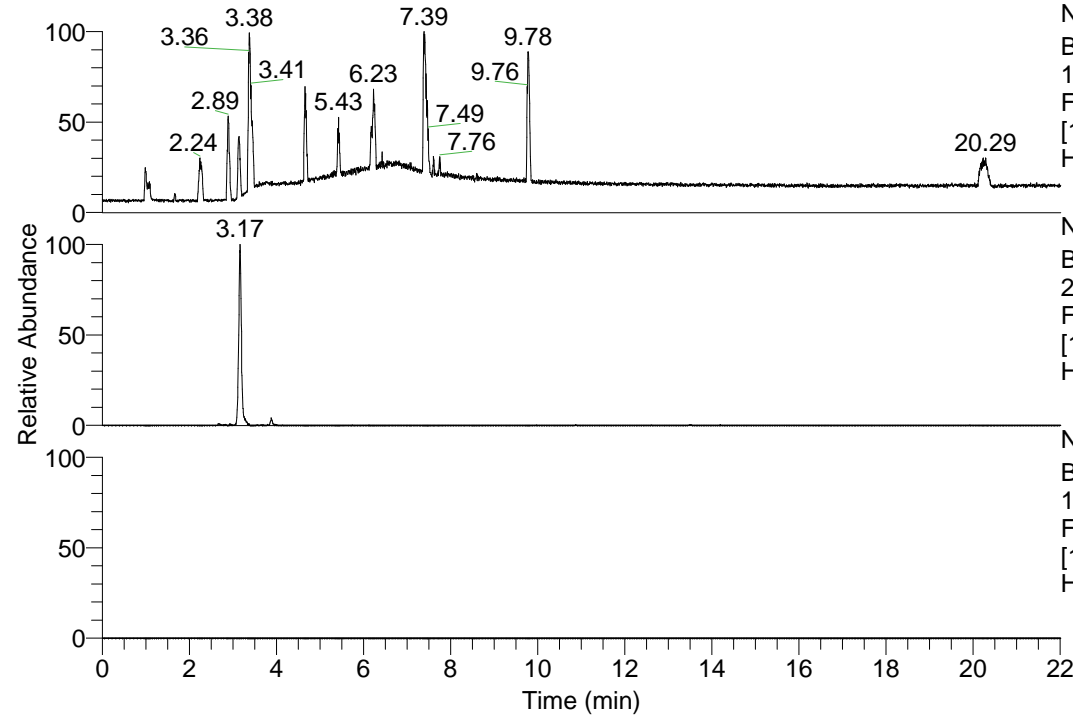


RT: 0.00 - 22.01



NL: 1.13E8
Base Peak m/z=
100.00000-1500.00000 F:
FTMS + p ESI Full ms
[100.00-1500.00] MS
Hcurta_HDX

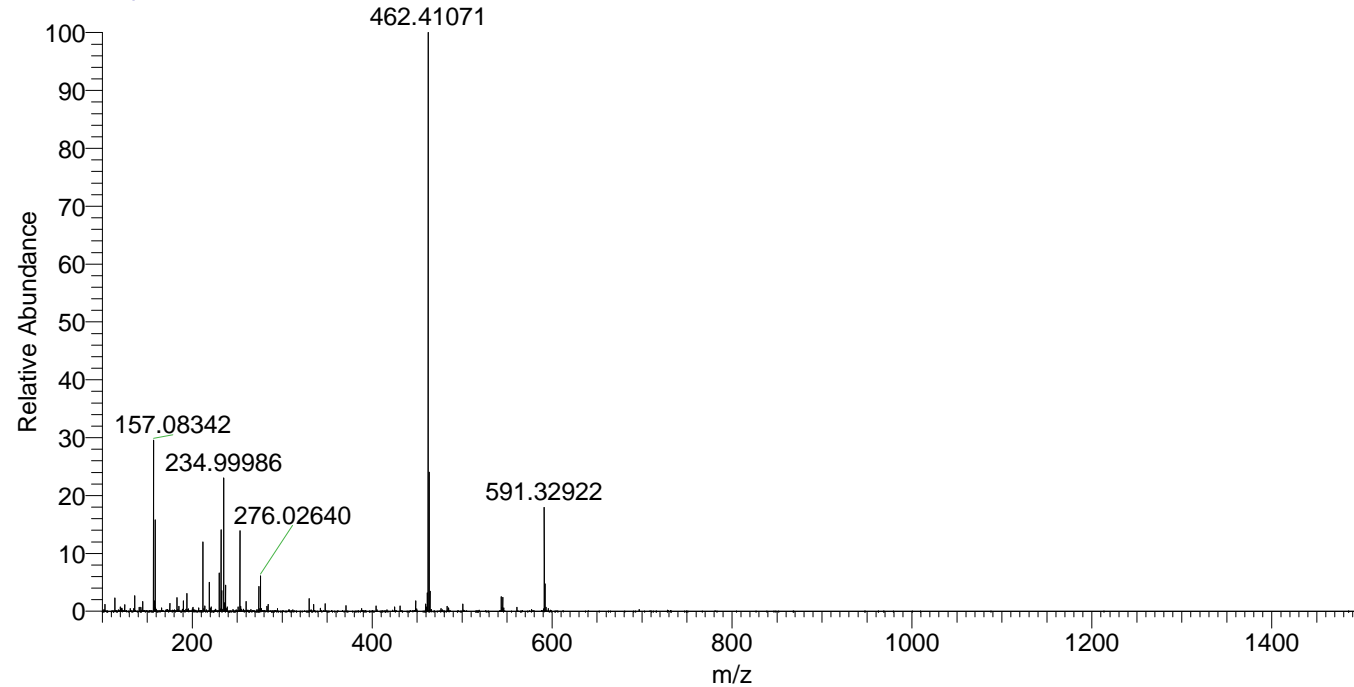
NL: 1.48E6
Base Peak m/z=
274.20241-274.20515 F:
FTMS + p ESI Full ms
[100.00-1500.00] MS
Hcurta_HDX

NL: 0
Base Peak m/z=
138.10825-138.10963 F:
FTMS + p ESI Full ms
[100.00-1500.00] MS
Hcurta_HDX

Hcurta_HDX#488 RT: 3.17
T: FTMS + p ESI Full ms [100.00-1500.00]
m/z= 274.00000-275.00000

m/z	Intensity	Relative	Delta (ppm)	Composition
274.20282	1483614.1	100.00	-1.49	C ₁₃ H ₁₆ ² H ₆ O ₃ N ₃
			4.16	C ₁₃ H ₁₄ ² H ₇ O ₃ N ₃

Hcurta_HDX #488 RT: 3.17 AV: 1 NL: 3.38E7
T: FTMS + p ESI Full ms [100.00-1500.00]



Hcurta_HDX #488 RT: 3.17 AV: 1 NL: 2.07E6
T: FTMS + p ESI Full ms [100.00-1500.00]

