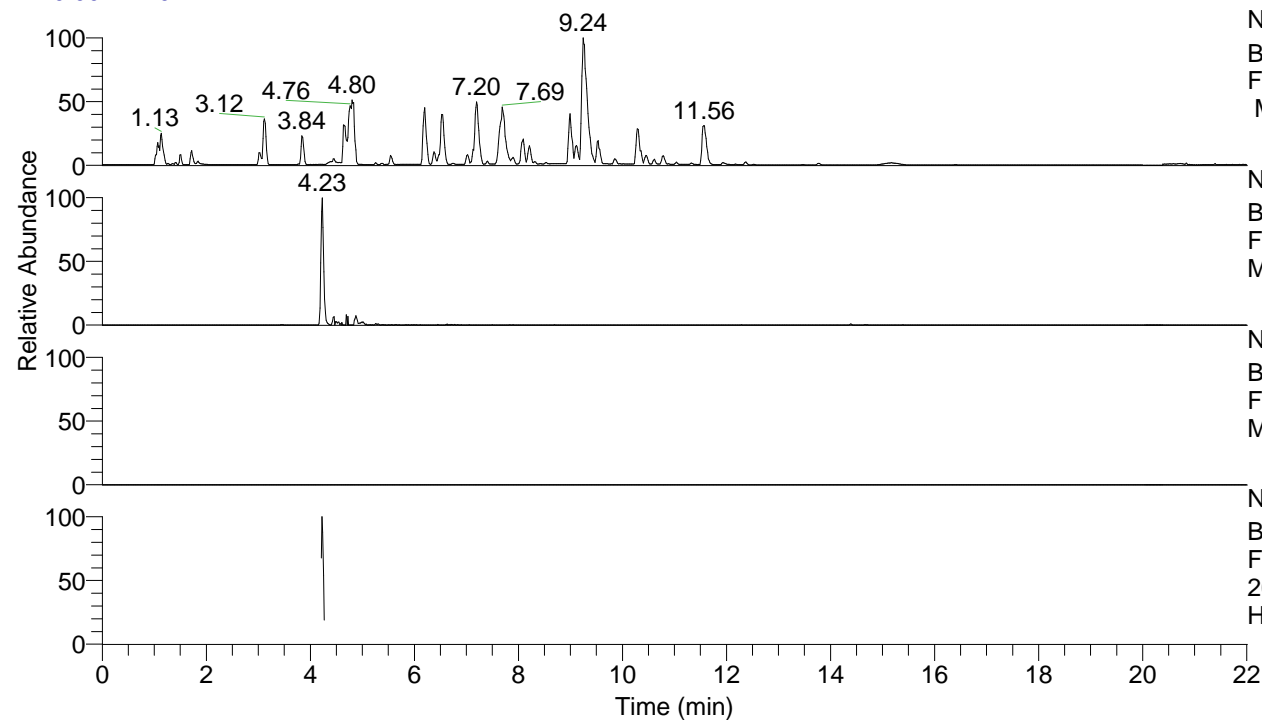


RT: 0.00 - 22.01



NL: 8.52E7
 Base Peak m/z= 100.00000-1500.00000
 F: FTMS + p ESI Full ms [100.00-1500.00]
 MS Hcurta

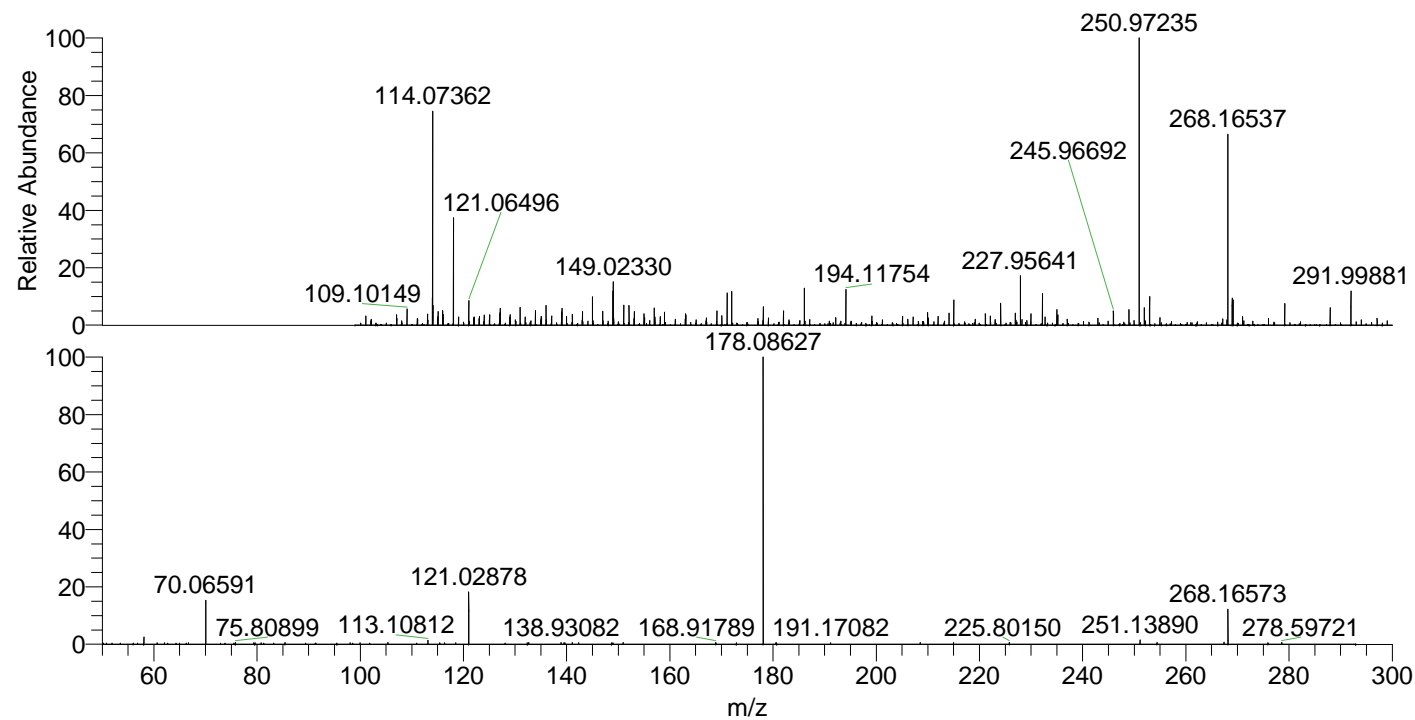
NL: 4.49E5
 Base Peak m/z= 268.16478-268.16746 F:
 FTMS + p ESI Full ms [100.00-1500.00]
 MS Hcurta

NL: 0
 Base Peak m/z= 134.58630-134.58764 F:
 FTMS + p ESI Full ms [100.00-1500.00]
 MS Hcurta

NL: 1.83E5
 Base Peak m/z= 50.00000-1500.00000 F:
 FTMS + p ESI d Full ms2
 268.17@hcd35.00 [50.00-290.00] MS
 Hcurta

Hcurta#1685-1709 RT: 4.21-4.27 AV: 5
 F: FTMS + p ESI d Full ms2 268.17 ...
 m/z= 50.00000-1000.00000

m/z	Intensity	Relative
58.06604	3048.1	2.62
60.64487	617.2	0.53
70.06591	17941.1	15.39
75.80899	688.4	0.59
80.80890	619.6	0.53
85.42177	599.9	0.51
98.02526	595.6	0.51
99.94445	626.7	0.54
105.35543	693.8	0.60
113.10812	1682.4	1.44
118.49378	627.7	0.54
121.02878	22050.6	18.92
132.67034	687.2	0.59
138.93082	730.6	0.63
141.10427	678.6	0.58
148.70244	616.2	0.53
150.97241	715.5	0.61
168.91789	670.0	0.57
172.89685	607.0	0.52
178.08627	116549.0	100.00
178.10094	1939.3	1.66
180.70111	588.1	0.50
191.17082	614.0	0.53
208.53028	711.4	0.61
214.99182	700.4	0.60
225.80150	754.3	0.65
251.13890	1724.2	1.48
254.41200	698.1	0.60
267.39767	807.7	0.69
268.16573	14455.9	12.40
278.56242	637.3	0.55
278.59721	692.6	0.59



NL: 6.74E5
 Hcurta#1693 RT: 4.23
 AV: 1 T: FTMS + p ESI
 Full lock ms
 [100.00-1500.00]

NL: 1.17E5
 Hcurta#1632-1740 RT:
 4.21-4.27 AV: 5 F: FTMS
 + p ESI d Full ms2
 268.17@hcd35.00
 [50.00-290.00]