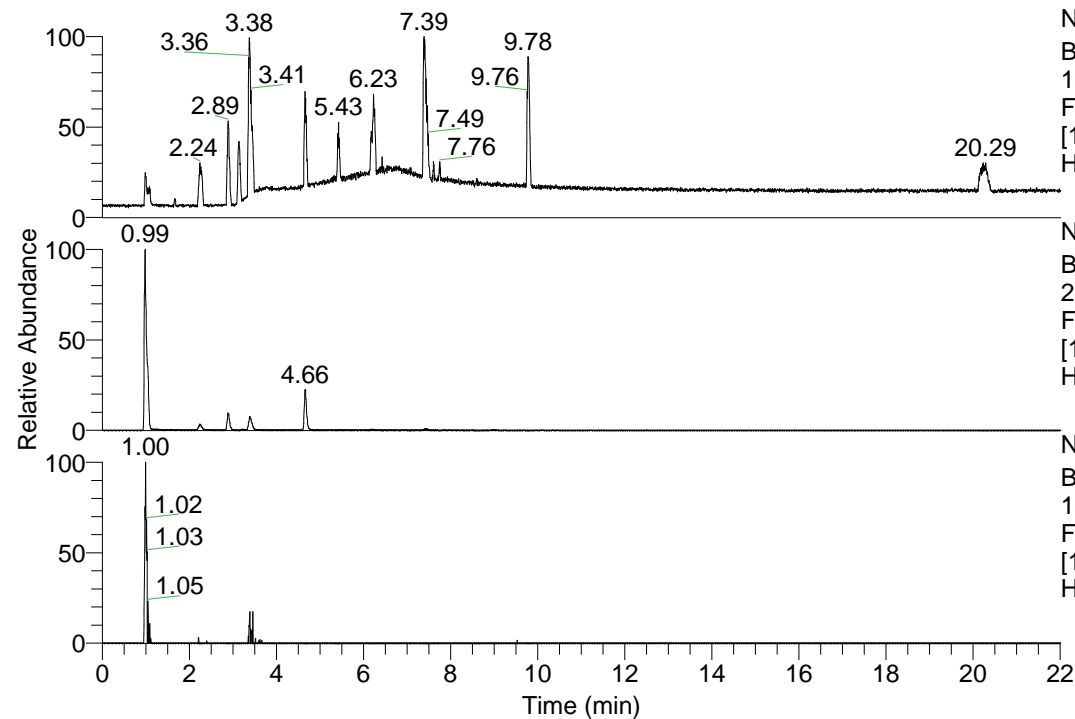


RT: 0.00 - 22.01



NL: 1.13E8
 Base Peak m/z=
 100.00000-1500.00000 F:
 FTMS + p ESI Full ms
 [100.00-1500.00] MS
 Hcurta_HDX

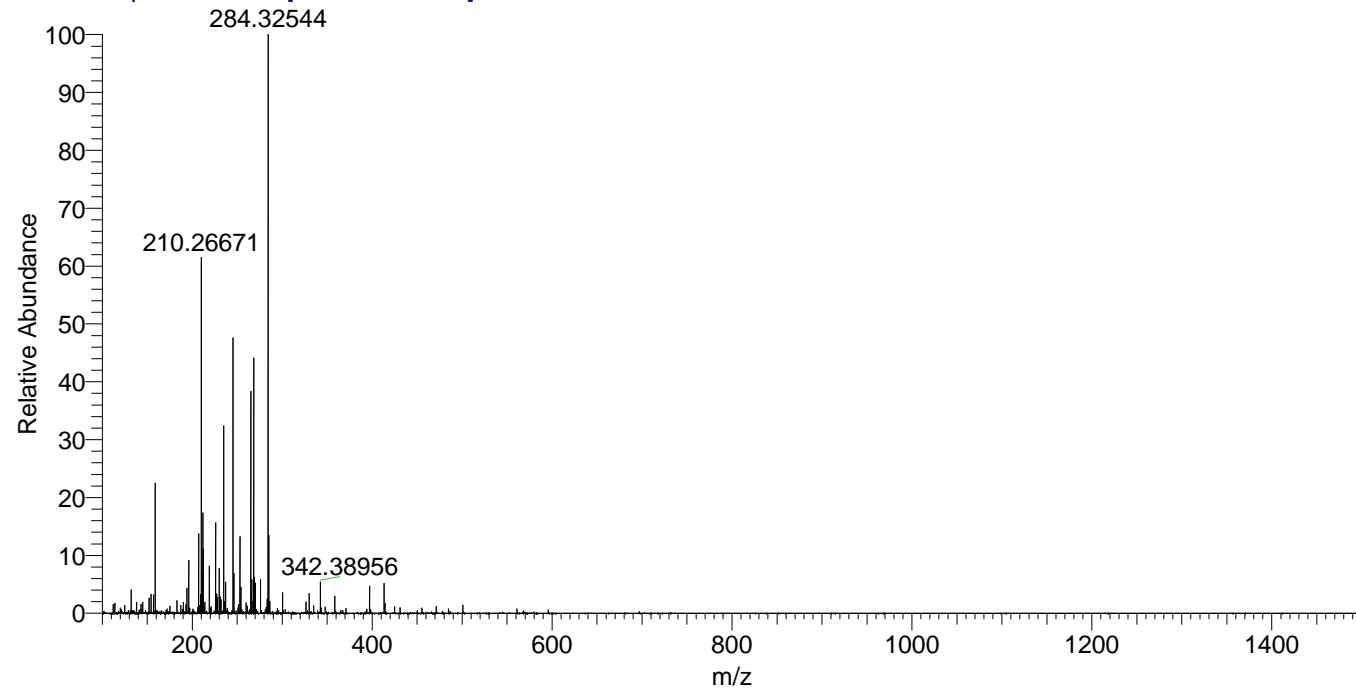
NL: 1.39E7
 Base Peak m/z=
 268.33030-268.33298 F:
 FTMS + p ESI Full ms
 [100.00-1500.00] MS
 Hcurta_HDX

NL: 1.70E5
 Base Peak m/z=
 135.17219-135.17355 F:
 FTMS + p ESI Full ms
 [100.00-1500.00] MS
 Hcurta_HDX

Hcurta_HDX#148 RT: 0.99
 T: FTMS + p ESI Full ms [100.00-1500.00]
 m/z= 268.00000-269.00000

m/z	Intensity	Relative	Delta (ppm)	Composition
268.33060	12215242.0	100.00	-1.82	C ₁₃ H ₂₆ ² H ₈ N ₅
			3.95	C ₁₃ H ₂₄ ² H ₉ N ₅

Hcurta_HDX #148 RT: 0.99 AV: 1 NL: 2.76E7
 T: FTMS + p ESI Full ms [100.00-1500.00]



Hcurta_HDX #148 RT: 0.99 AV: 1 NL: 1.22E7
 T: FTMS + p ESI Full ms [100.00-1500.00]

