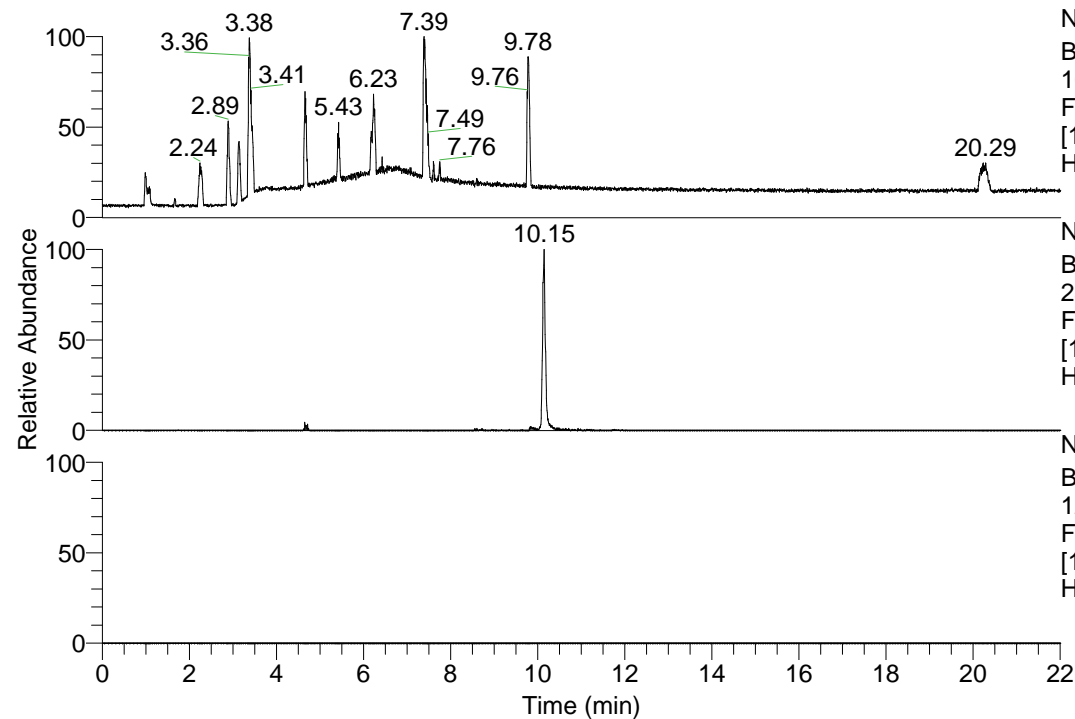


RT: 0.00 - 22.01



NL: 1.13E8
 Base Peak m/z=
 100.00000-1500.00000 F:
 FTMS + p ESI Full ms
 [100.00-1500.00] MS
 Hcurta_HDX

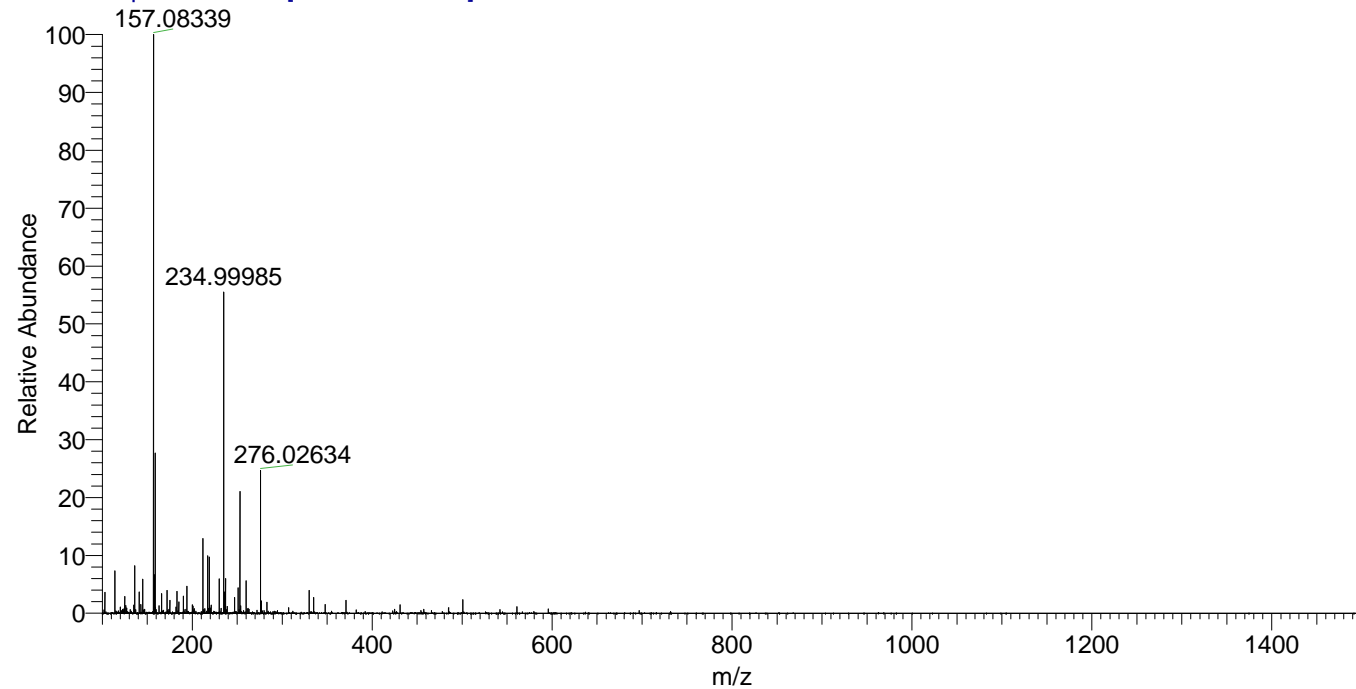
NL: 8.21E5
 Base Peak m/z=
 251.19076-251.19328 F:
 FTMS + p ESI Full ms
 [100.00-1500.00] MS
 Hcurta_HDX

NL: 0
 Base Peak m/z=
 126.60243-126.60369 F:
 FTMS + p ESI Full ms
 [100.00-1500.00] MS
 Hcurta_HDX

Hcurta_HDX#1647 RT: 10.15
 T: FTMS + p ESI Full ms [100.00-1500.00]
 m/z= 251.00000-252.00000

m/z	Intensity	Relative	Delta (ppm)	Composition
251.19110	821476.8	100.00	-1.48	C ₁₄ H ₁₅ ² H ₅ ON ₃
			4.68	C ₁₄ H ₁₃ ² H ₆ ON ₃

Hcurta_HDX #1647 RT: 10.15 AV: 1 NL: 1.86E7
 T: FTMS + p ESI Full ms [100.00-1500.00]



Hcurta_HDX #1647 RT: 10.15 AV: 1 NL: 3.91E6
 T: FTMS + p ESI Full ms [100.00-1500.00]

