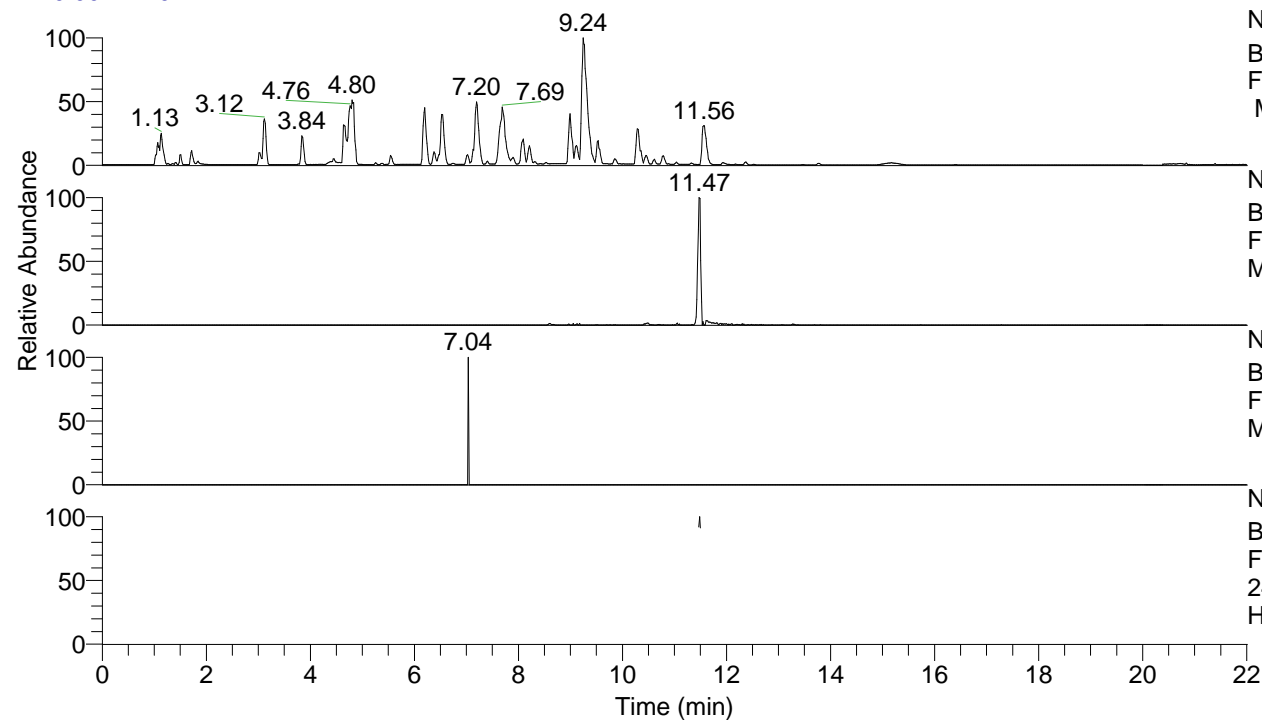


RT: 0.00 - 22.01



NL: 8.52E7
 Base Peak m/z= 100.00000-1500.00000
 F: FTMS + p ESI Full ms [100.00-1500.00]
 MS Hcurta

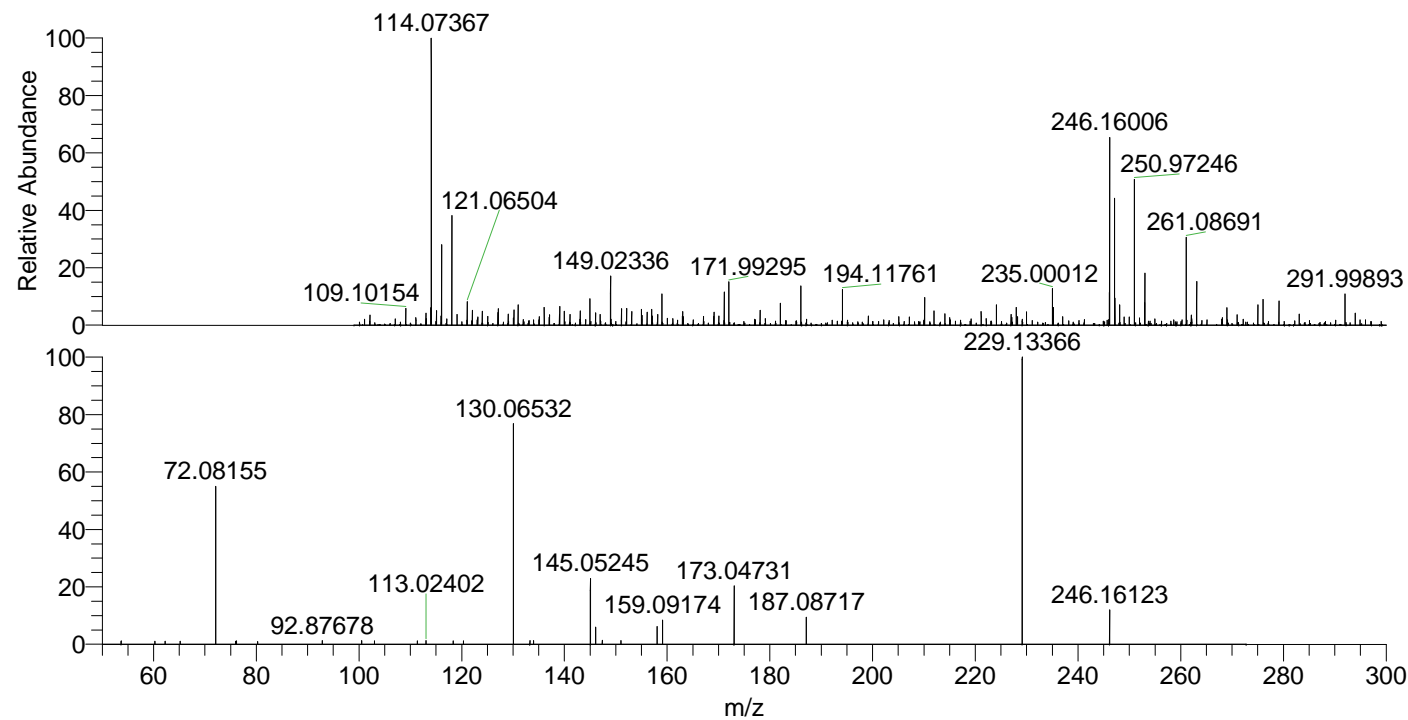
NL: 4.03E5
 Base Peak m/z= 246.15941-246.16187 F:
 FTMS + p ESI Full ms [100.00-1500.00]
 MS Hcurta

NL: 1.05E3
 Base Peak m/z= 123.58361-123.58485 F:
 FTMS + p ESI Full ms [100.00-1500.00]
 MS Hcurta

NL: 8.82E4
 Base Peak m/z= 50.00000-1500.00000 F:
 FTMS + p ESI d Full ms2
 246.16@hcd35.00 [50.00-270.00] MS
 Hcurta

Hcurta#4601-4611 RT: 11.47-11.50 AV: 3
 F: FTMS + p ESI d Full ms2 246.16 ...
 m/z= 50.00000-1000.00000

m/z	Intensity	Relative
53.67620	625.4	0.81
53.70259	837.1	1.09
60.23704	785.8	1.02
62.23683	793.4	1.03
65.16902	822.3	1.07
72.08155	41015.3	53.20
75.95980	821.4	1.07
76.12524	855.2	1.11
80.25277	736.8	0.96
92.87678	1007.4	1.31
100.50948	939.0	1.22
103.02750	871.9	1.13
111.34357	856.4	1.11
113.02402	979.1	1.27
118.34454	922.0	1.20
120.35841	862.1	1.12
130.06532	58403.7	75.75
133.27817	982.4	1.27
133.97044	953.4	1.24
145.05245	17026.0	22.08
146.06039	4410.7	5.72
147.36739	1049.2	1.36
151.01128	957.9	1.24
158.06075	4608.3	5.98
159.09174	6260.9	8.12
173.04731	15514.2	20.12
187.08717	7208.3	9.35
229.13366	77102.8	100.00
246.16123	8989.3	11.66



NL: 6.11E5
 Hcurta#4603 RT: 11.47
 AV: 1 T: FTMS + p ESI
 Full lock ms
 [100.00-1500.00]

NL: 7.45E4
 Hcurta#4537-4666 RT:
 11.47-11.50 AV: 3 F:
 FTMS + p ESI d Full ms2
 246.16@hcd35.00
 [50.00-270.00]