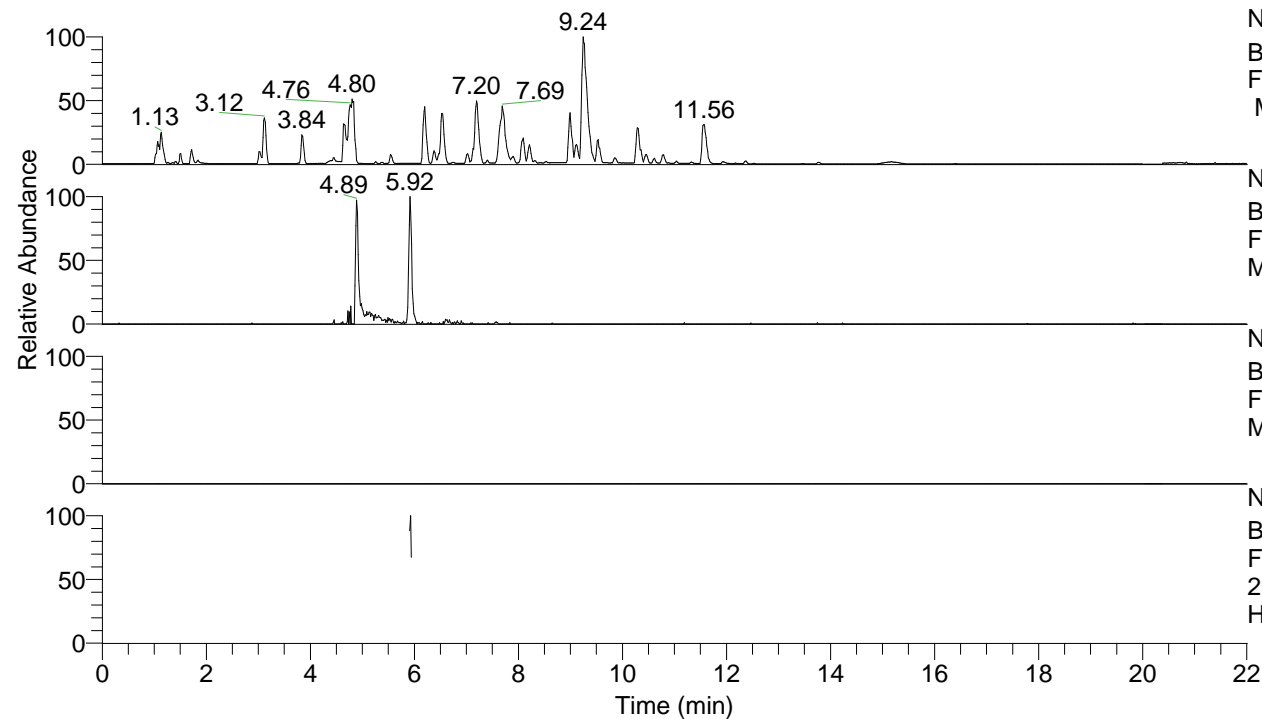


RT: 0.00 - 22.01



NL: 8.52E7  
 Base Peak m/z= 100.00000-1500.00000  
 F: FTMS + p ESI Full ms [100.00-1500.00]  
 MS Hcurta

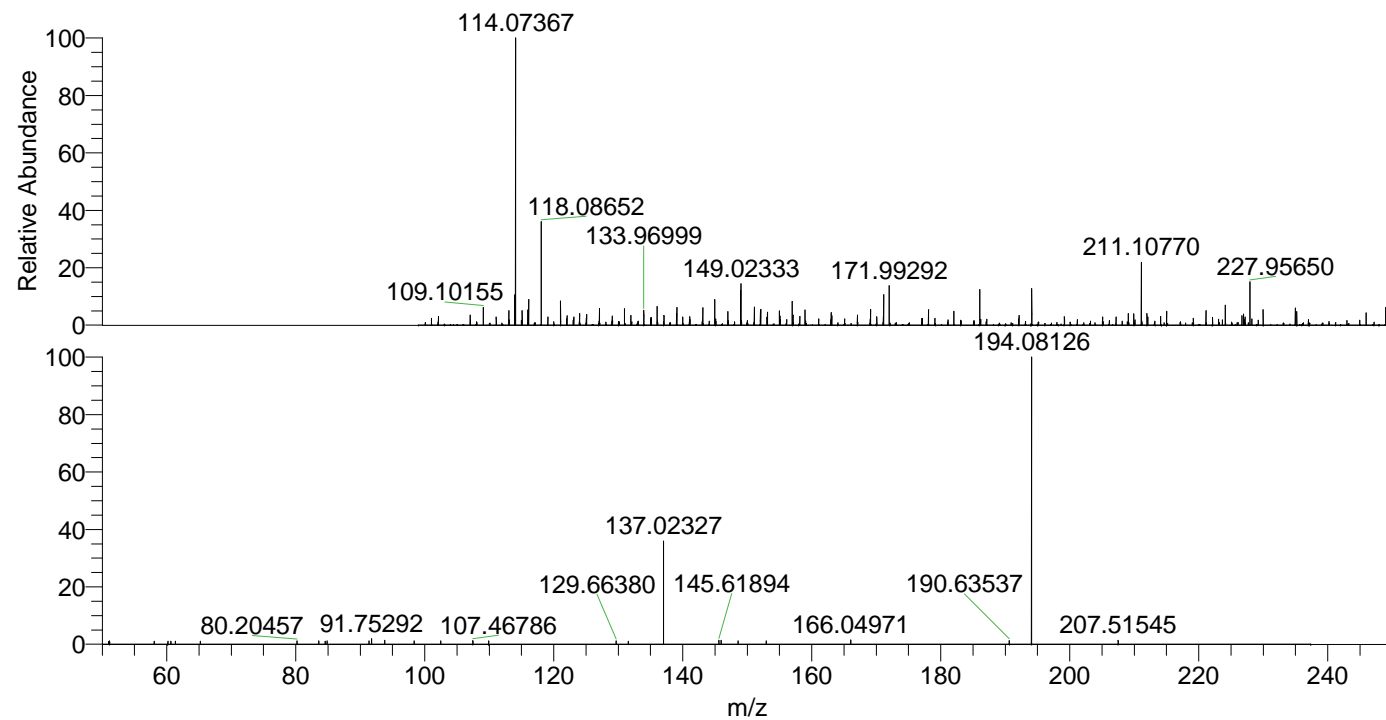
NL: 1.41E5  
 Base Peak m/z= 211.10721-211.10933 F:  
 FTMS + p ESI Full ms [100.00-1500.00]  
 MS Hcurta

NL: 0  
 Base Peak m/z= 106.05752-106.05858 F:  
 FTMS + p ESI Full ms [100.00-1500.00]  
 MS Hcurta

NL: 8.67E4  
 Base Peak m/z= 50.00000-1500.00000 F:  
 FTMS + p ESI d Full ms2  
 211.11@hcd35.00 [50.00-235.00] MS  
 Hcurta

Hcurta#2370-2382 RT: 5.91-5.94 AV: 3  
 F: FTMS + p ESI d Full ms2 211.11 ...  
 m/z= 50.00000-1000.00000

m/z	Intensity	Relative
50.98492	692.6	0.99
51.14110	830.9	1.18
58.06589	753.1	1.07
60.17452	744.7	1.06
60.64446	757.3	1.08
61.34963	744.2	1.06
65.21557	719.6	1.02
80.20457	830.5	1.18
83.56803	806.1	1.15
84.57697	773.6	1.10
84.85726	816.8	1.16
91.36879	822.9	1.17
91.75292	1387.9	1.98
93.78629	1005.1	1.43
98.37686	832.7	1.19
102.49415	838.6	1.19
107.46786	886.5	1.26
109.90527	857.1	1.22
129.66380	859.1	1.22
131.57388	785.9	1.12
137.02327	25372.2	36.12
145.61894	996.8	1.42
145.96963	990.7	1.41
148.57845	867.0	1.23
152.94486	851.5	1.21
166.04971	1070.2	1.52
190.63537	937.6	1.33
194.08126	70249.7	100.00
207.51545	991.7	1.41



NL: 6.31E5  
 Hcurta#2371 RT: 5.92  
 AV: 1 T: FTMS + p ESI  
 Full lock ms  
 [100.00-1500.00]

NL: 7.02E4  
 Hcurta#2336-2444 RT:  
 5.91-5.94 AV: 3 F: FTMS  
 + p ESI d Full ms2  
 211.11@hcd35.00  
 [50.00-235.00]