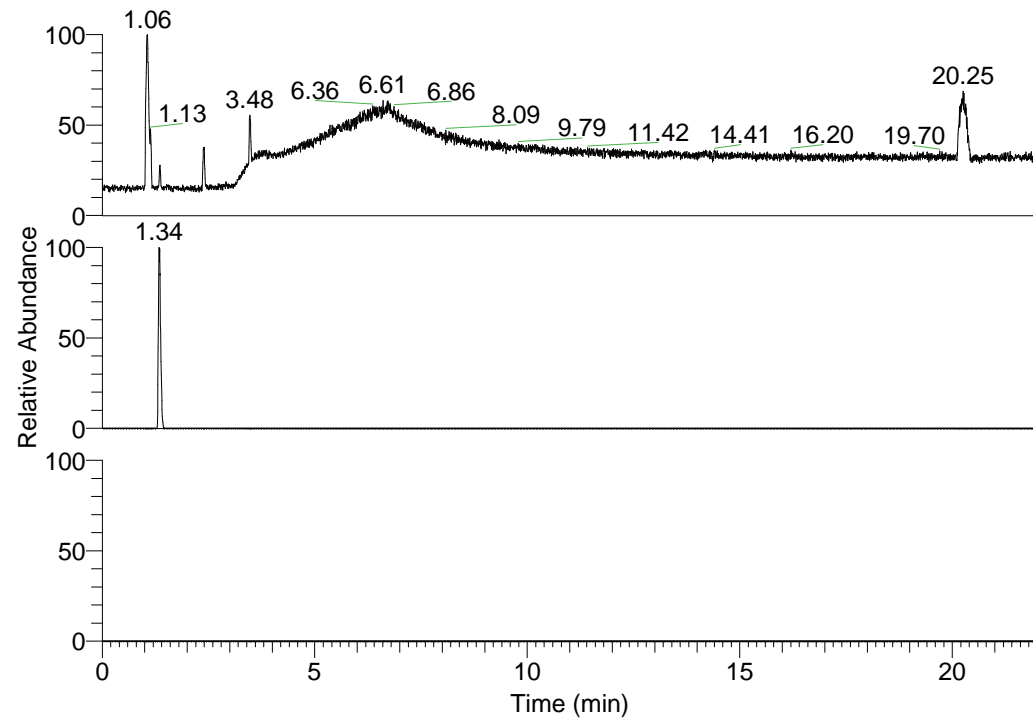


RT: 0.00 - 22.01



NL: 5.19E7  
Base Peak m/z=  
100.00000-1500.00000 F:  
FTMS + p ESI Full ms  
[100.00-1500.00] MS  
Hcaroliensis\_HDX

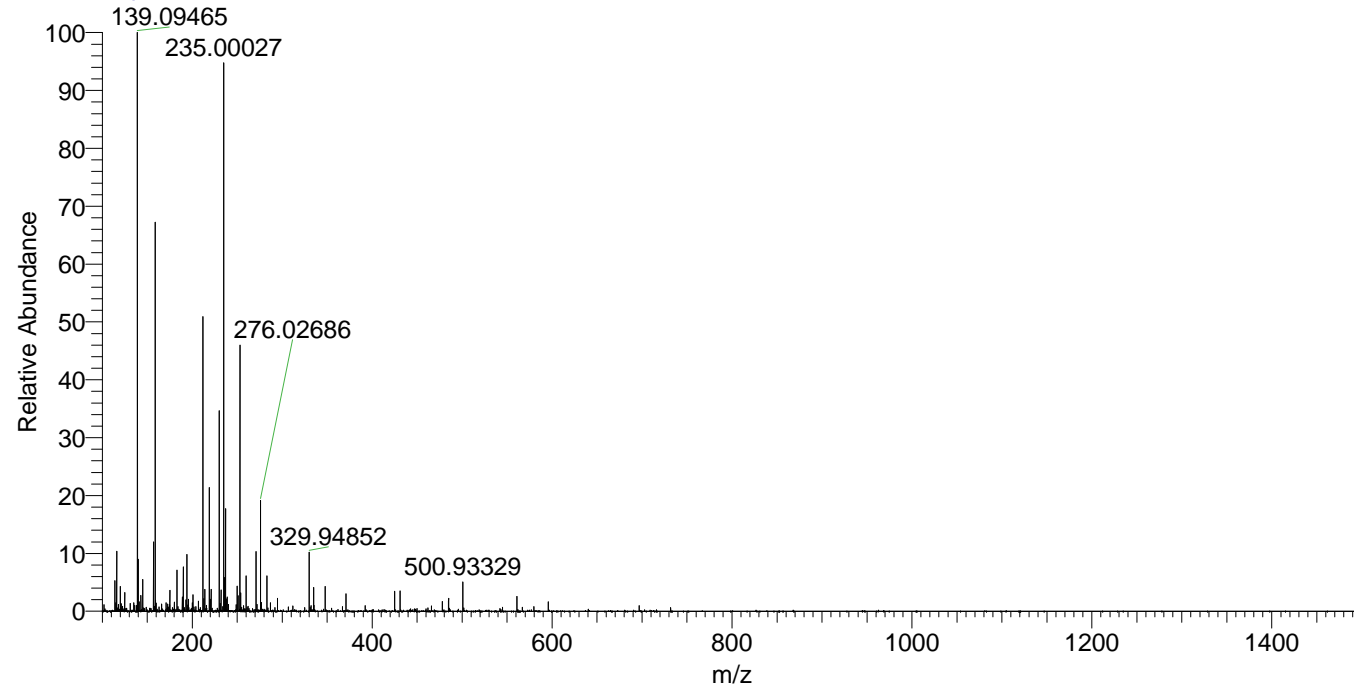
NL: 4.06E5  
Base Peak m/z=  
250.12975-250.13225 F: FTMS  
+ p ESI Full ms  
[100.00-1500.00] MS  
Hcaroliensis\_HDX

NL: 0  
Base Peak m/z=  
203.68301-203.68505 F: FTMS  
+ p ESI Full ms  
[100.00-1500.00] MS  
Hcaroliensis\_HDX

Hcaroliensis\_HDX#203 RT: 1.34  
T: FTMS + p ESI Full ms [100.00-1500.00]  
m/z= 250.00000-251.00000

m/z	Intensity	Relative	Delta (ppm)	Composition
250.13054	373860.8	100.00	0.33	C <sub>9</sub> H <sub>8</sub> <sup>2</sup> H <sub>6</sub> O <sub>5</sub> N <sub>3</sub>

Hcaroliensis\_HDX #202 RT: 1.34 AV: 1 NL: 9.29E6  
T: FTMS + p ESI Full ms [100.00-1500.00]



Hcaroliensis\_HDX #203 RT: 1.34 AV: 1 NL: 3.82E6  
T: FTMS + p ESI Full ms [100.00-1500.00]

