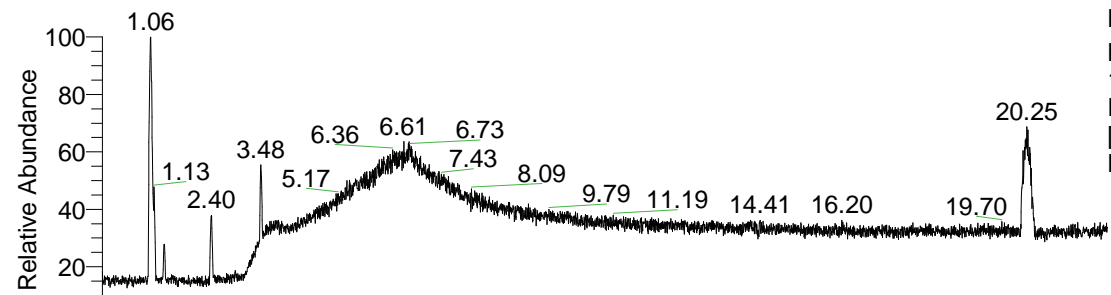


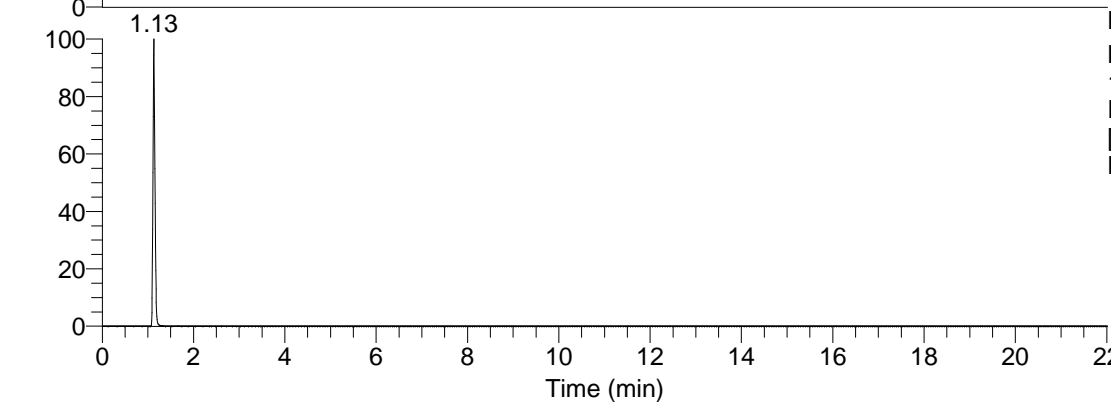
RT: 0.00 - 22.01



NL: 5.19E7
Base Peak m/z=
100.00000-1500.00000 F:
FTMS + p ESI Full ms
[100.00-1500.00] MS
Hcaroliensis_HDX

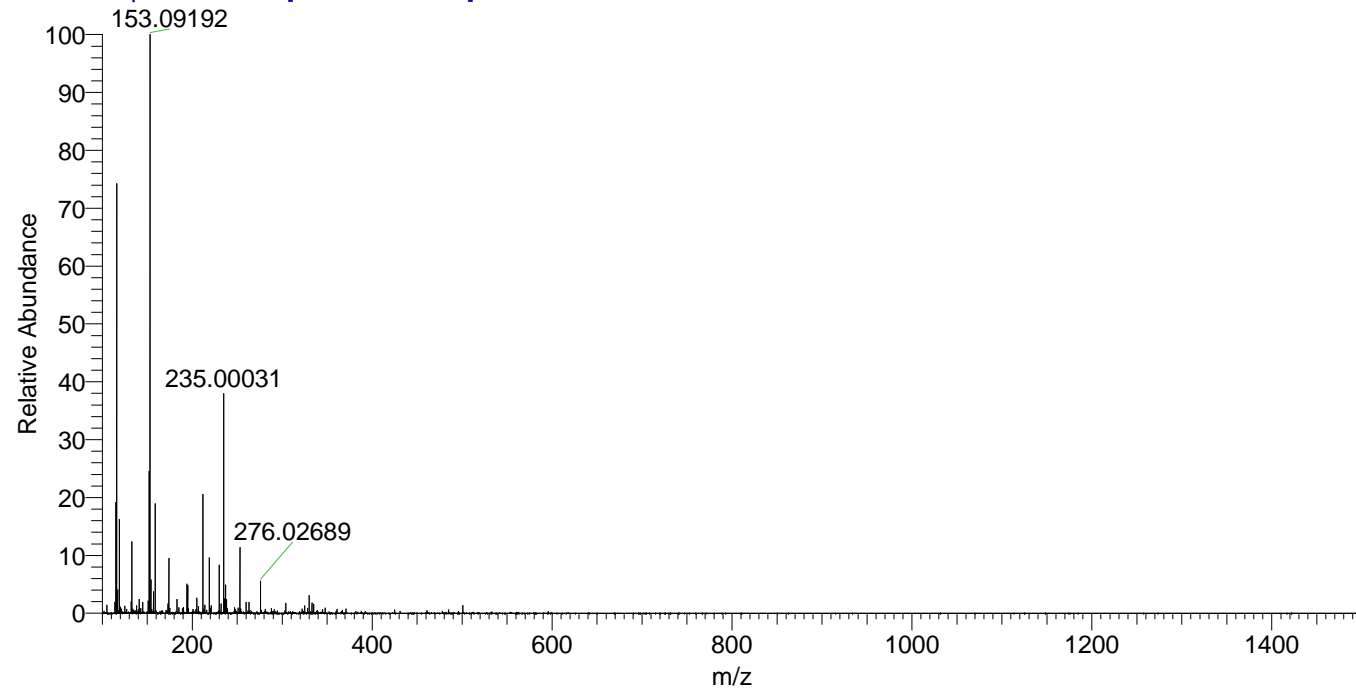
Hcaroliensis_HDX#170 RT: 1.13
T: FTMS + p ESI Full ms [100.00-1500.00]
m/z= 119.00000-120.00000

m/z	Intensity	Relative	Delta (ppm)	Composition
119.09287	3719570.0	100.00	2.86	C ₅ H ₁₁ ² H O ₂ N



NL: 3.72E6
Base Peak m/z=
119.09248-119.09368 F:
FTMS + p ESI Full ms
[100.00-1500.00] MS
Hcaroliensis_HDX

Hcaroliensis_HDX #170 RT: 1.13 AV: 1 NL: 2.29E7
T: FTMS + p ESI Full ms [100.00-1500.00]



Hcaroliensis_HDX #170 RT: 1.13 AV: 1 NL: 1.70E7
T: FTMS + p ESI Full ms [100.00-1500.00]

