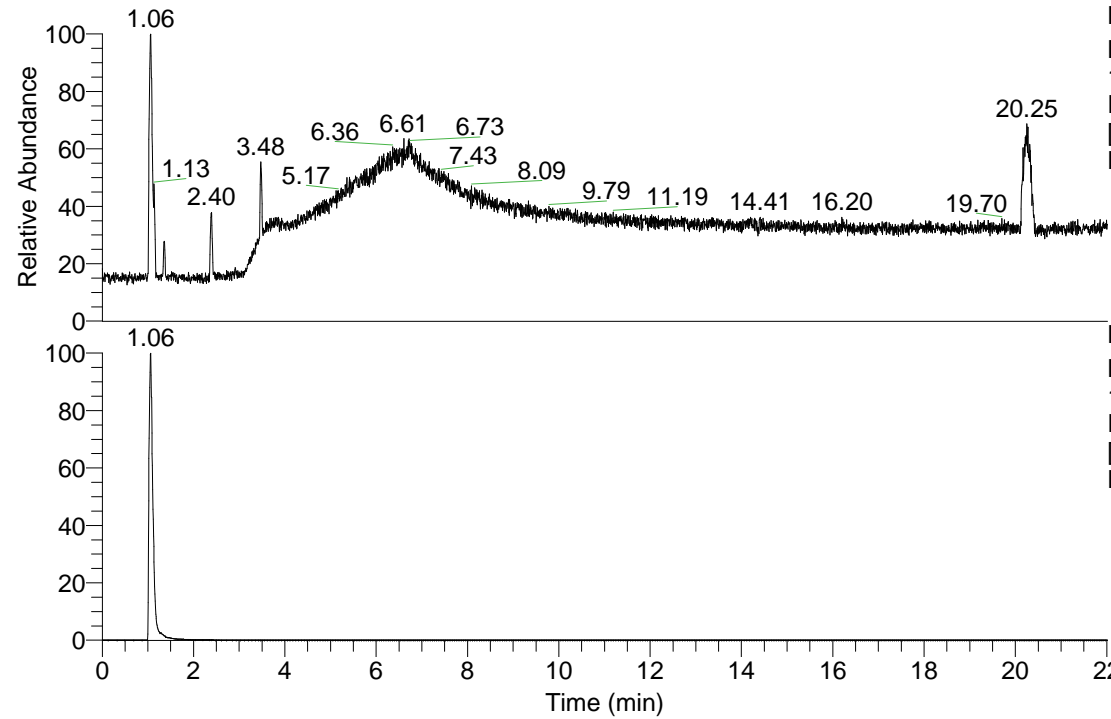


RT: 0.00 - 22.01

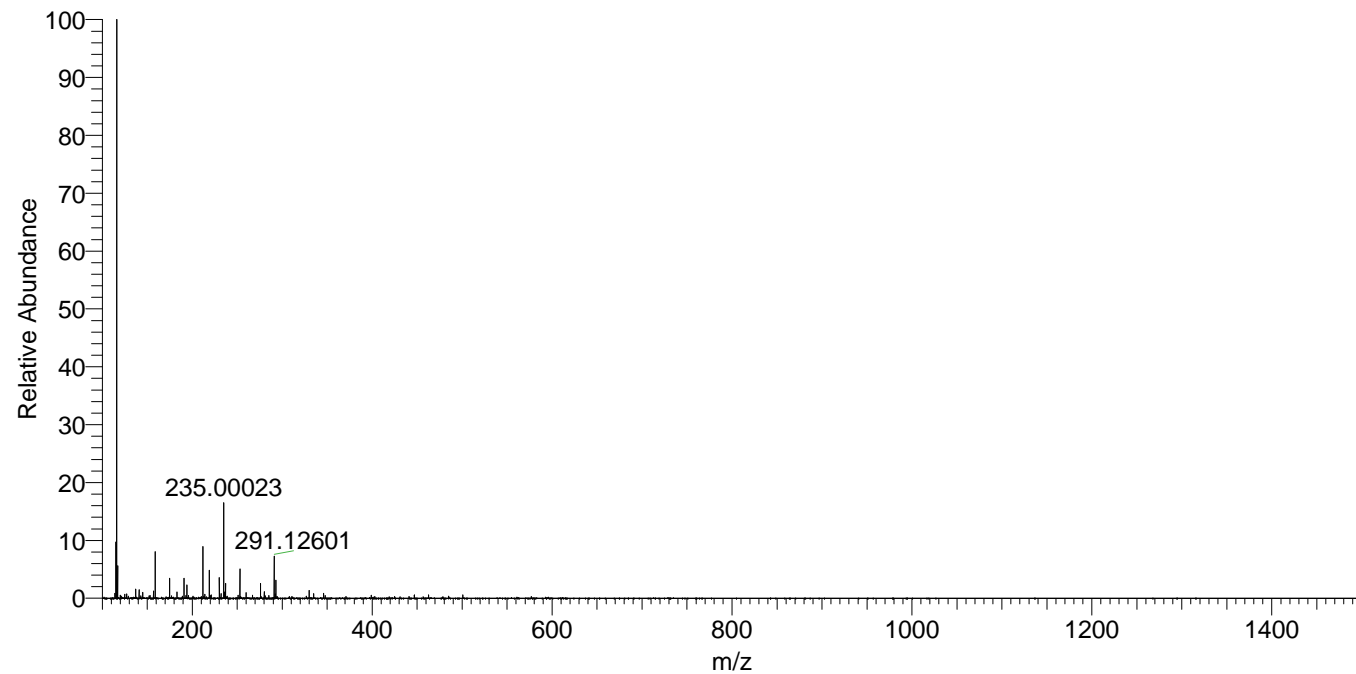


Base Peak m/z=
100.00000-1500.00000 F:
FTMS + p ESI Full ms
[100.00-1500.00] MS
Hcaroliensis_HDX

Hcaroliensis_HDX#158 RT: 1.06
T: FTMS + p ESI Full ms [100.00-1500.00]
m/z= 116.00000-117.00000

m/z	Intensity	Relative	Delta (ppm)	Composition
116.11234	51687436.0	100.00	2.62	C ₅ H ₆ ² H ₄ N ₃

Hcaroliensis_HDX #158 RT: 1.06 AV: 1 NL: 5.03E7
T: FTMS + p ESI Full ms [100.00-1500.00]



Hcaroliensis_HDX #158 RT: 1.06 AV: 1 NL: 5.03E7
T: FTMS + p ESI Full ms [100.00-1500.00]

