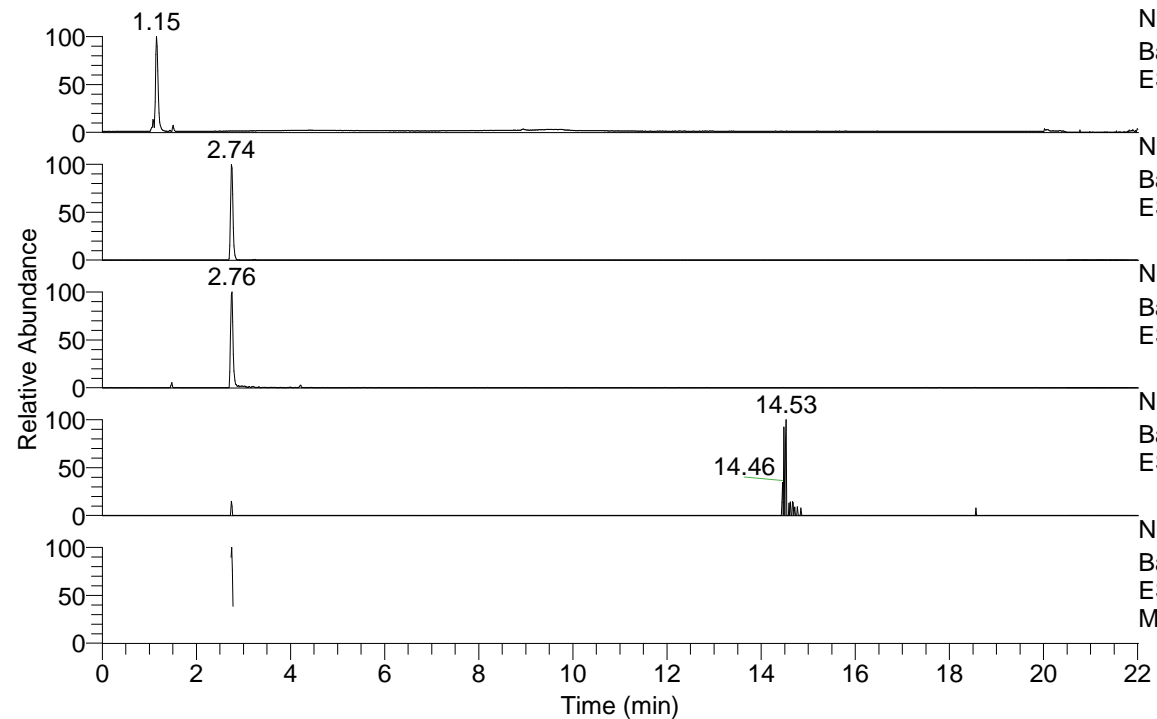


RT: 0.00 - 22.01



NL: 5.04E7  
Base Peak m/z= 50.00000-1500.00000 F: FTMS + p  
ESI Full ms [100.00-1500.00] MS Eresussp2

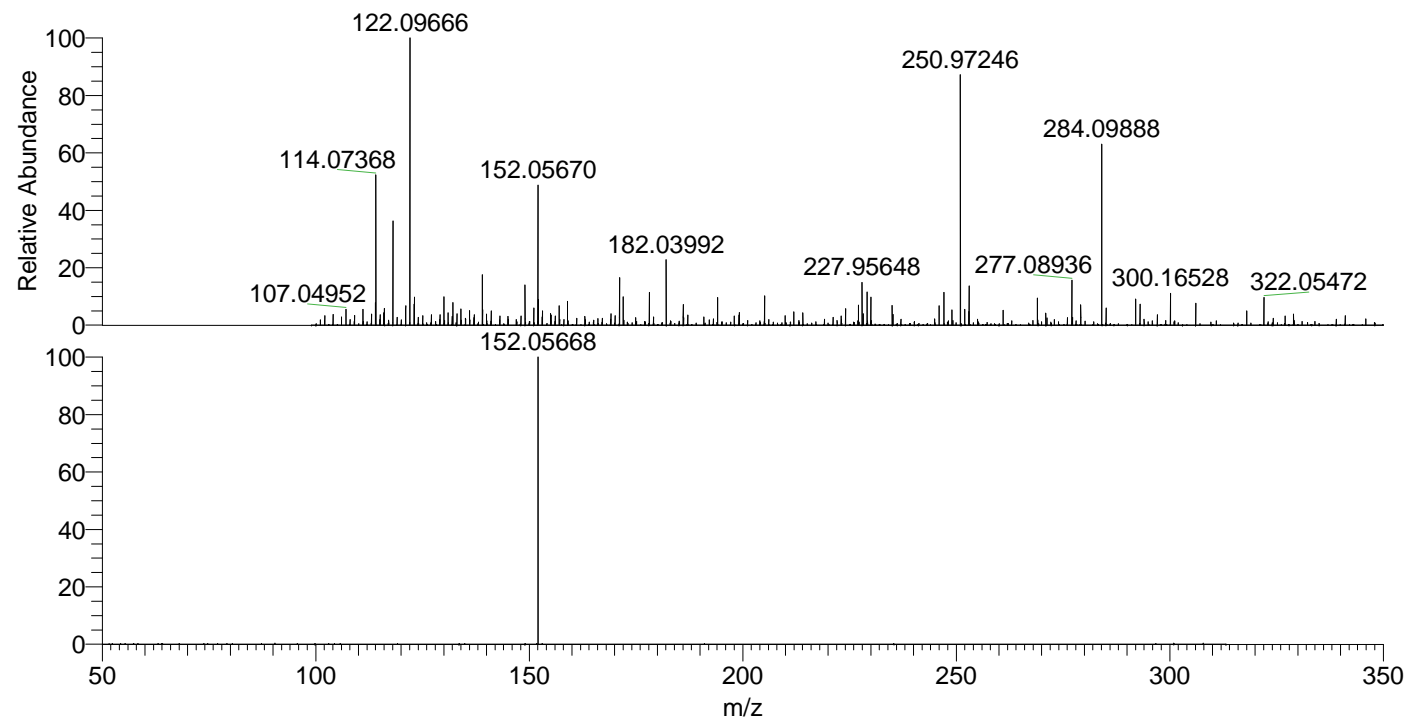
NL: 4.40E5  
Base Peak m/z= 284.09807-284.10091 F: FTMS + p  
ESI Full ms [100.00-1500.00] MS Eresussp2

NL: 3.53E5  
Base Peak m/z= 152.05647-152.05799 F: FTMS + p  
ESI Full ms [100.00-1500.00] MS Eresussp2

NL: 1.57E4  
Base Peak m/z= 567.18832-567.19400 F: FTMS + p  
ESI Full ms [100.00-1500.00] MS Eresussp2

NL: 3.74E5  
Base Peak m/z= 50.00000-1500.00000 F: FTMS + p  
ESI d Full ms2 284.10@hcd35.00 [50.00-310.00]  
MS Eresussp2

Eresussp2#1092-1109 RT: 2.74-2.78 AV:  
F: FTMS + p ESI d Full ms2 284.10 ...  
m/z= 50.00000-1000.00000  
m/z Intensity Relative  
152.05668 264650.3 100.00



NL: 6.95E5  
Eresussp2#1093 RT:  
2.74 AV: 1 T: FTMS + p  
ESI Full lock ms  
[100.00-1500.00]

NL: 2.58E5  
Eresussp2#1056-1141  
RT: 2.74-2.78 AV: 4 F:  
FTMS + p ESI d Full ms2  
284.10@hcd35.00  
[50.00-310.00]