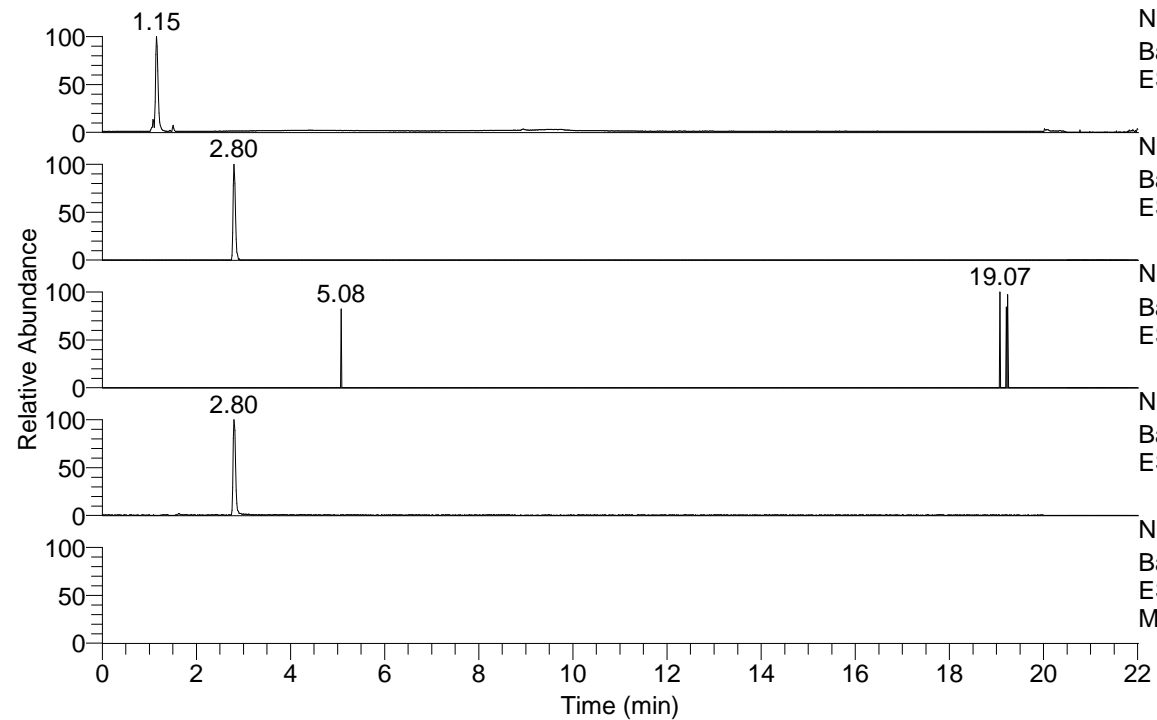


RT: 0.00 - 22.01



NL: 5.04E7  
Base Peak m/z= 50.00000-1500.00000 F: FTMS + p  
ESI Full ms [100.00-1500.00] MS Eresusssp2

NL: 2.44E5  
Base Peak m/z= 269.08724-269.08994 F: FTMS + p  
ESI Full ms [100.00-1500.00] MS Eresusssp2

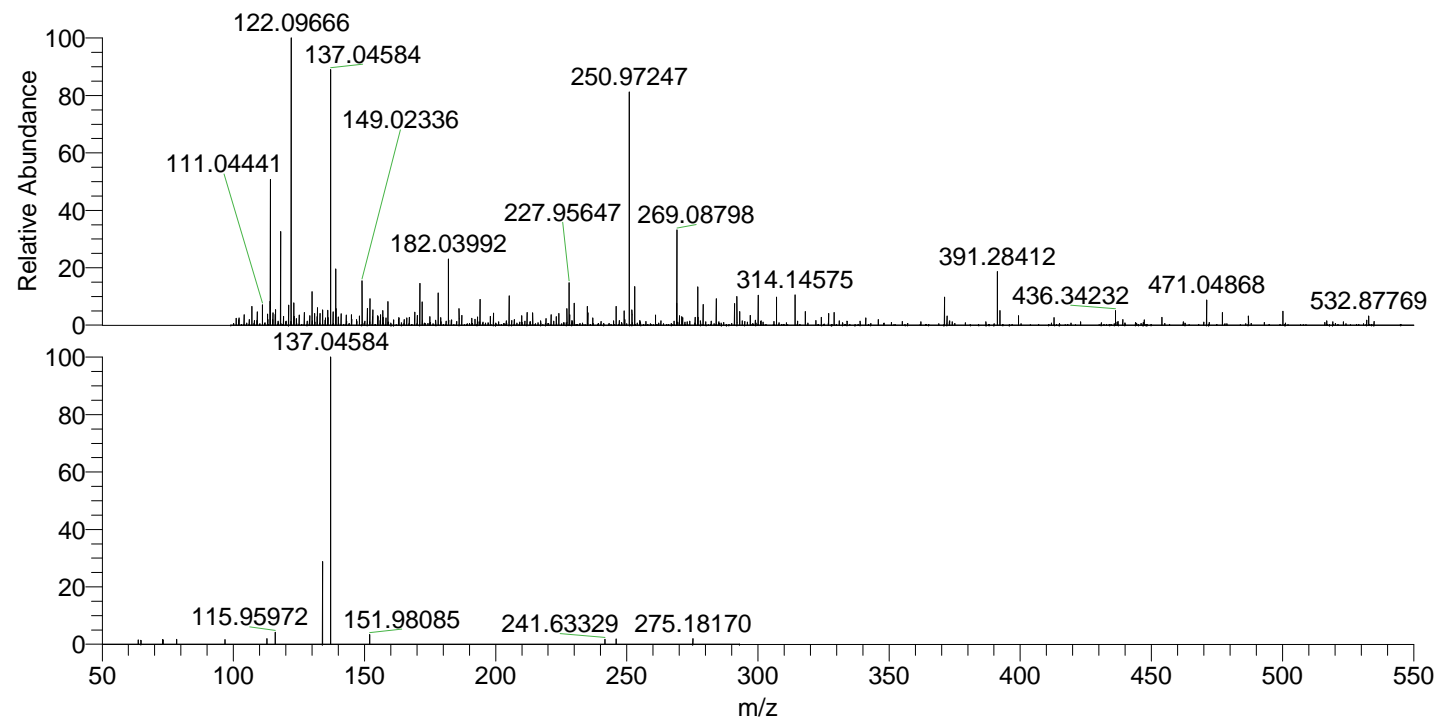
NL: 1.33E3  
Base Peak m/z= 537.16667-537.17205 F: FTMS + p  
ESI Full ms [100.00-1500.00] MS Eresusssp2

NL: 6.26E5  
Base Peak m/z= 137.04565-137.04703 F: FTMS + p  
ESI Full ms [100.00-1500.00] MS Eresusssp2

NL: 1.79E5  
Base Peak m/z= 50.00000-1500.00000 F: FTMS + p  
ESI d Full ms2 269.09@hcd35.00 [50.00-290.00]  
MS Eresusssp2

Eresusssp2#1122 RT: 2.81  
F: FTMS + p ESI d Full ms2 269.09 ...  
m/z= 50.00000-1000.00000

m/z	Intensity	Relative
63.68052	2677.6	1.50
64.76666	2518.5	1.41
73.03557	2755.8	1.54
73.18729	2835.2	1.58
78.33649	2955.7	1.65
96.80004	2852.2	1.59
112.74854	3467.1	1.94
115.95972	7422.7	4.14
133.97014	50733.6	28.33
137.04584	179080.1	100.00
151.98085	6032.2	3.37
241.63329	3157.2	1.76
245.96448	3231.8	1.80
275.18170	3411.0	1.90



NL: 7.03E5  
Eresusssp2#1117 RT:  
2.80 AV: 1 T: FTMS +  
p ESI Full lock ms  
[100.00-1500.00]

NL: 1.75E5  
Eresusssp2#1122 RT:  
2.81 AV: 1 F: FTMS +  
p ESI d Full ms2  
269.09@hcd35.00  
[50.00-290.00]