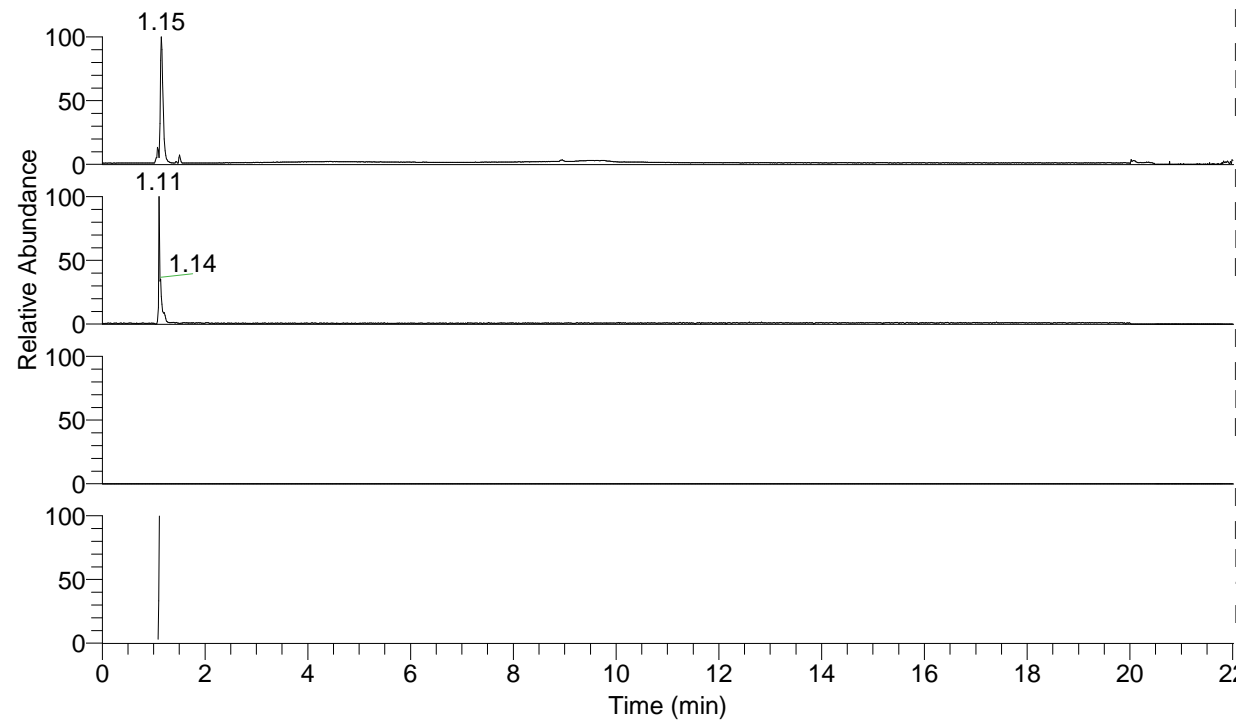


RT: 0.00 - 22.01



NL: 5.04E7
Base Peak m/z= 50.00000-1500.00000 F:
FTMS + p ESI Full ms [100.00-1500.00]
MS Eresussp2

NL: 1.06E6
Base Peak m/z= 175.11862-175.12038 F:
FTMS + p ESI Full ms [100.00-1500.00]
MS Eresussp2

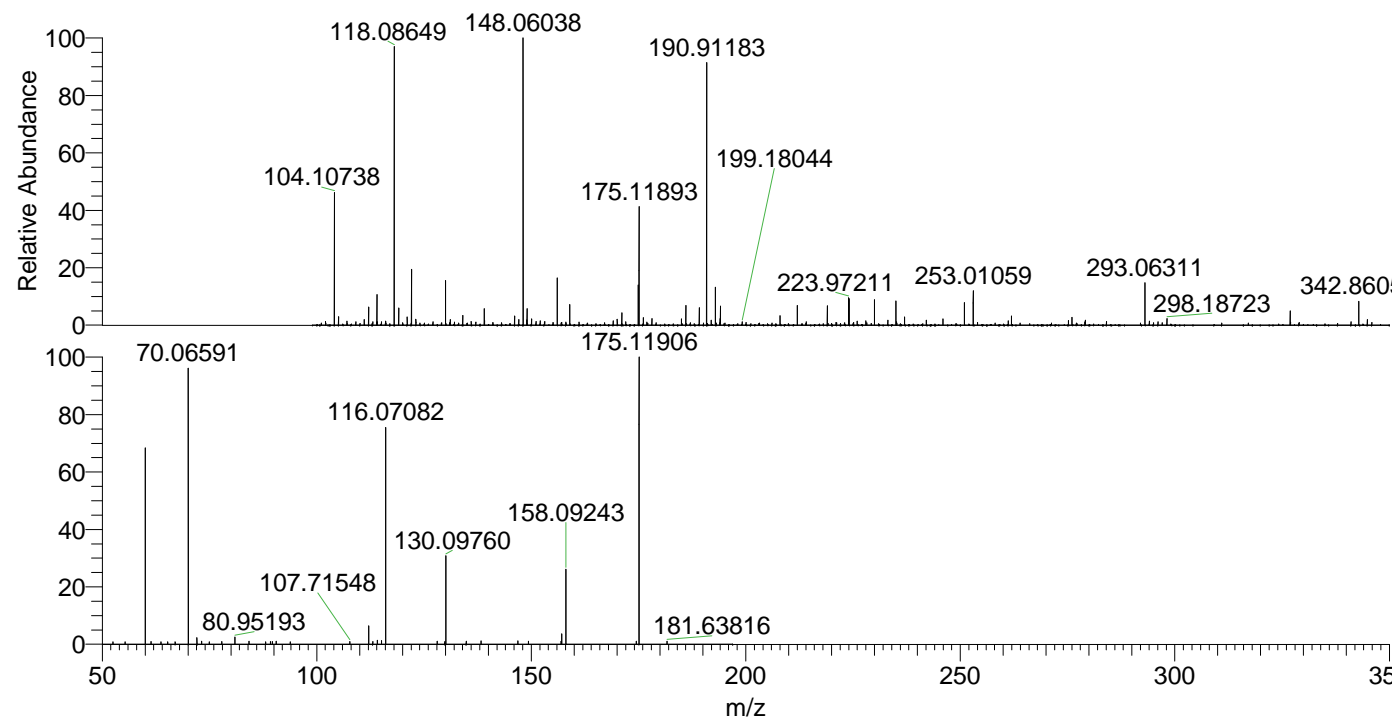
NL: 0
Base Peak m/z= 349.22943-349.23293 F:
FTMS + p ESI Full ms [100.00-1500.00]
MS Eresussp2

NL: 1.82E5
Base Peak m/z= 50.00000-1500.00000 F:
FTMS + p ESI d Full ms2
174.94@hcd35.00 [50.00-195.00] MS
Eresussp2

Eresussp2#430-441 RT: 1.09-1.11 AV: 3

F: FTMS + p ESI d Full ms2 174.94 ...
m/z= 50.00000-1000.00000

m/z	Intensity	Relative
52.51421	670.1	0.85
55.31981	615.2	0.78
60.05357	1817.6	2.32
60.05651	53779.9	68.62
61.39743	759.8	0.97
63.69763	702.5	0.90
65.24845	702.4	0.90
67.01020	661.8	0.84
70.06591	75406.8	96.21
72.08150	1833.7	2.34
73.19624	850.7	1.09
74.93833	651.8	0.83
77.88274	707.6	0.90
80.95193	1962.5	2.50
84.19610	839.1	1.07
88.11287	698.0	0.89
89.23566	774.4	0.99
89.66803	739.6	0.94
89.67365	688.1	0.88
90.53877	832.0	1.06
93.85762	697.8	0.89
107.71548	721.5	0.92
112.08724	5135.4	6.55
113.04685	711.0	0.91
114.10286	1084.5	1.38
115.08740	1006.5	1.28
116.07082	59904.6	76.43
128.08977	799.5	1.02
129.83345	722.4	0.92
130.09760	24399.5	31.13
134.83467	814.3	1.04
138.30508	926.3	1.18
146.88643	933.6	1.19
149.32201	831.9	1.06
156.94272	834.8	1.07
157.10853	2798.7	3.57
158.09243	20870.7	26.63
174.49421	838.7	1.07
175.11906	78376.6	100.00
181.63816	810.6	1.03



NL: 2.57E6
Eresussp2#439 RT: 1.11
AV: 1 T: FTMS + p ESI
Full lock ms
[100.00-1500.00]

NL: 7.82E4
Eresussp2#396-499 RT:
1.09-1.11 AV: 3 F: FTMS
+ p ESI d Full ms2
174.94@hcd35.00
[50.00-195.00]