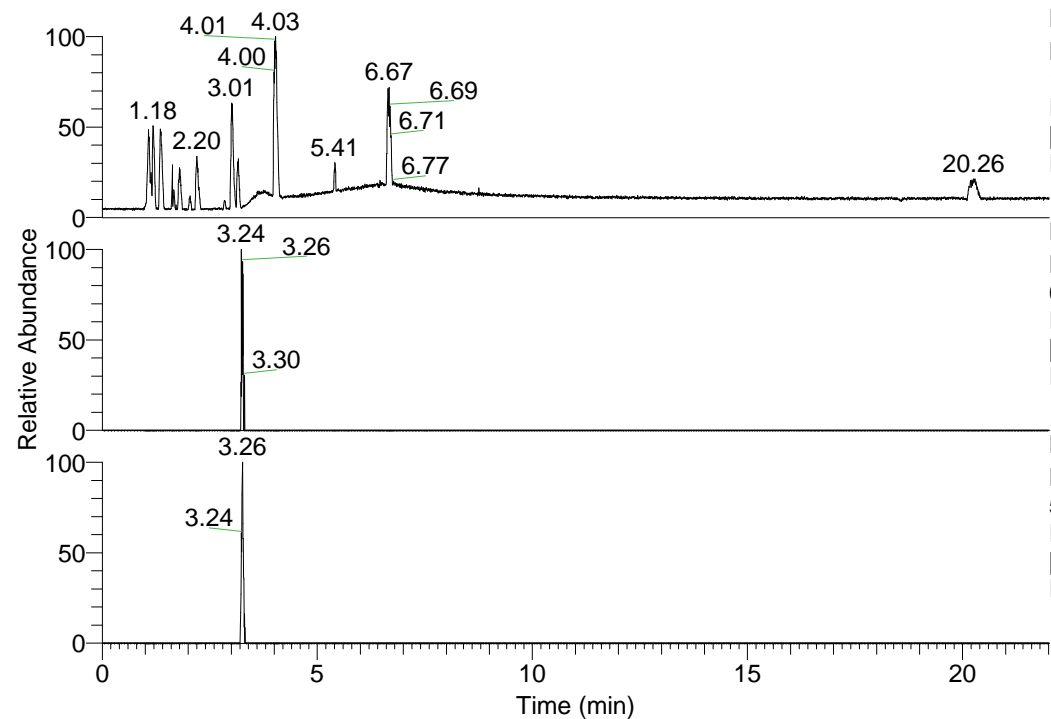


RT: 0.00 - 22.01



NL: 1.58E8
 Base Peak m/z=
 100.00000-1500.00000 F:
 FTMS + p ESI Full ms
 [100.00-1500.00] MS
 Eagrestis_HDX

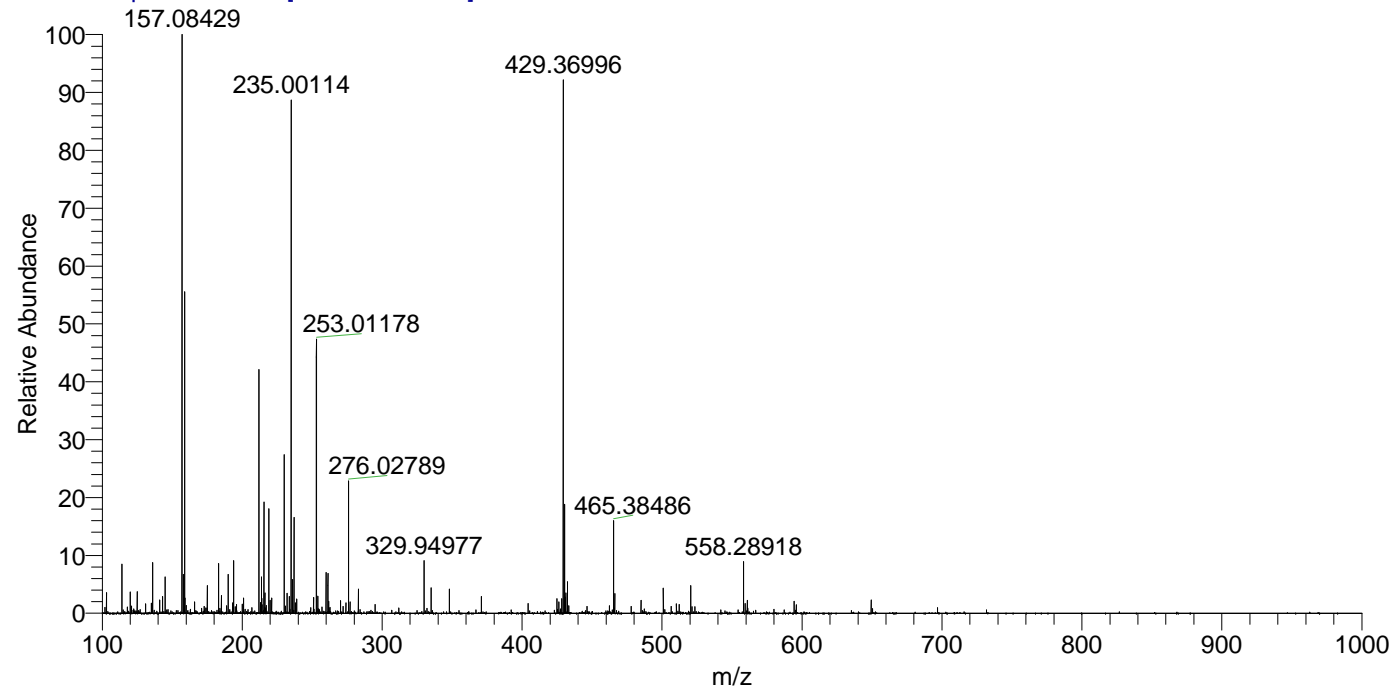
NL: 1.28E4
 Base Peak m/z=
 667.23783-667.24451 F:
 FTMS + p ESI Full ms
 [100.00-1500.00] MS
 Eagrestis_HDX

NL: 5.75E4
 Base Peak m/z=
 587.28142-587.28730 F:
 FTMS + p ESI Full ms
 [100.00-1500.00] MS
 Eagrestis_HDX

Eagrestis_HDX#515 RT: 3.26
 T: FTMS + p ESI Full ms [100.00-1500.00]
 m/z= 587.00000-588.00000

m/z	Intensity	Relative	Delta (ppm)	Composition
587.28613	57483.7	100.00	-1.31	C ₂₂ H ₂₇ ² H ₉ O ₁₃ N ₅
			1.32	C ₂₂ H ₂₅ ² H ₁₀ O ₁₃ N ₅
			-3.95	C ₂₂ H ₂₉ ² H ₈ O ₁₃ N ₅
			3.96	C ₂₂ H ₂₃ ² H ₁₁ O ₁₃ N ₅
			6.60	C ₂₂ H ₂₁ ² H ₁₂ O ₁₃ N ₅
			9.23	C ₂₂ H ₁₉ ² H ₁₃ O ₁₃ N ₅

Eagrestis_HDX #515 RT: 3.26 AV: 1 NL: 9.25E6
 T: FTMS + p ESI Full ms [100.00-1500.00]



Eagrestis_HDX #515 RT: 3.26 AV: 1 NL: 5.50E4
 T: FTMS + p ESI Full ms [100.00-1500.00]

