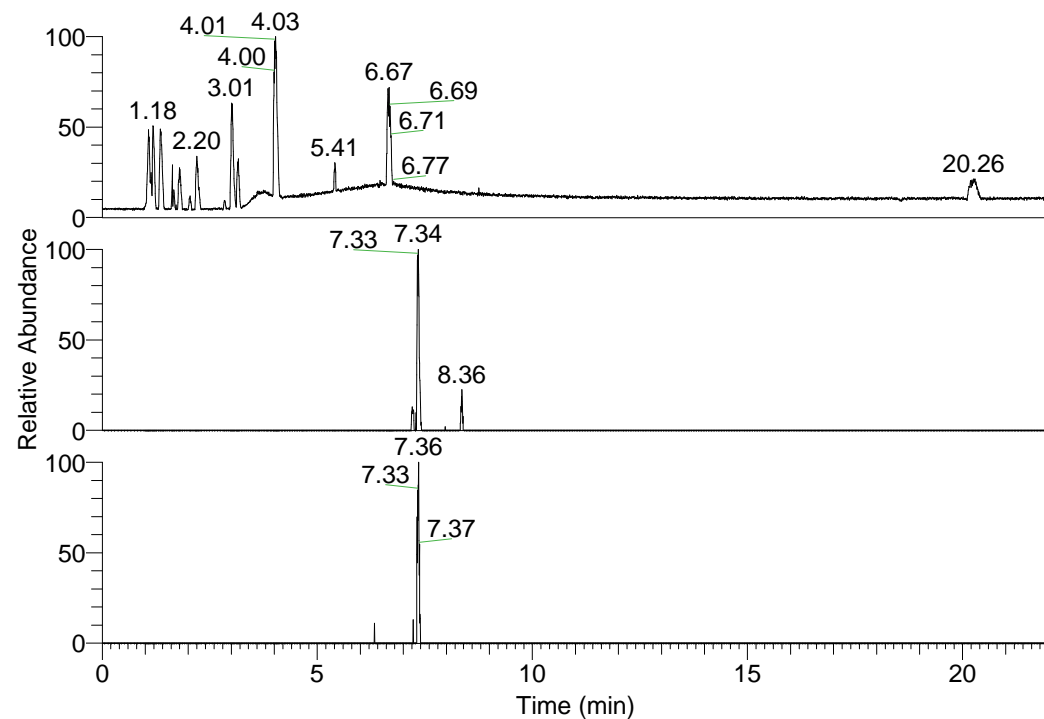


RT: 0.00 - 22.01



NL: 1.58E8
 Base Peak m/z=
 100.00000-1500.00000 F:
 FTMS + p ESI Full ms
 [100.00-1500.00] MS
 Egrestis_HDX

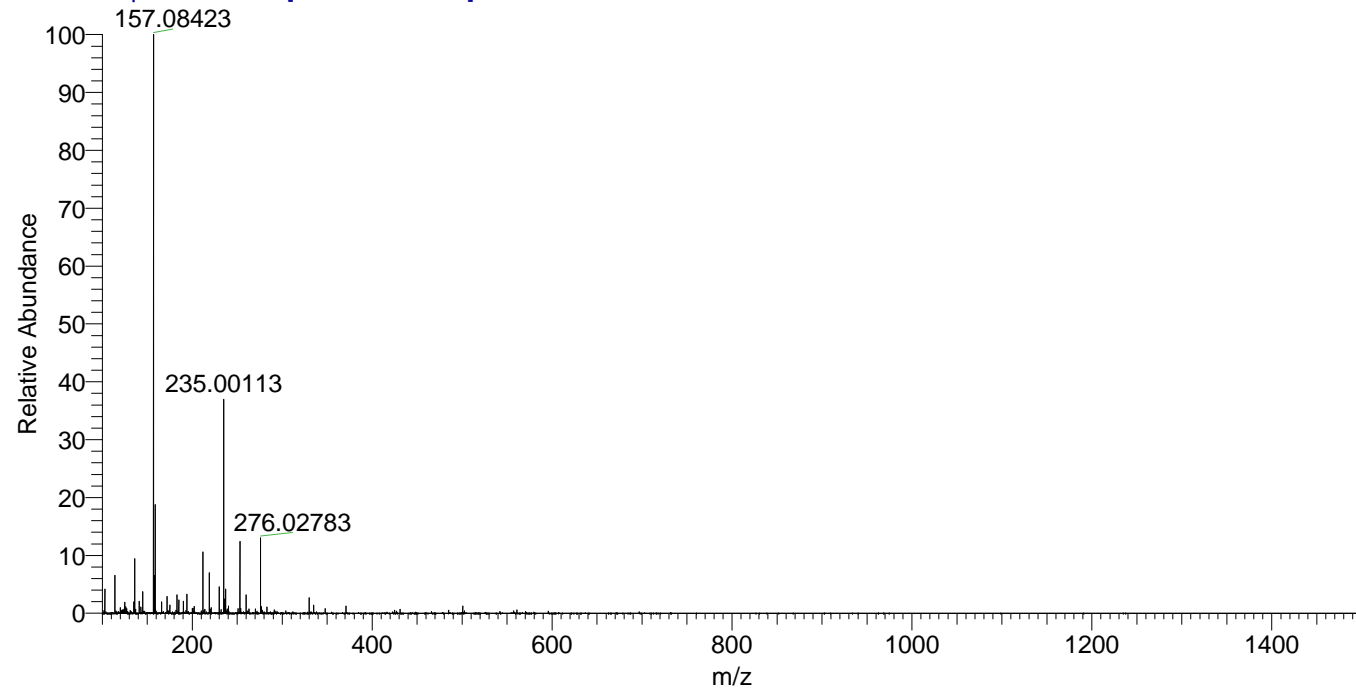
NL: 1.31E5
 Base Peak m/z=
 557.44613-557.45171 F:
 FTMS + p ESI Full ms
 [100.00-1500.00] MS
 Egrestis_HDX

NL: 3.30E4
 Base Peak m/z=
 279.73011-279.73291 F:
 FTMS + p ESI Full ms
 [100.00-1500.00] MS
 Egrestis_HDX

Egrestis_HDX#1186 RT: 7.34
 T: FTMS + p ESI Full ms [100.00-1500.00]
 m/z= 557.00000-558.00000

m/z	Intensity	Relative	Delta (ppm)	Composition
557.45093	97253.3	100.00	-0.97	C ₂₈ H ₄₅ ² H ₇ O ₄ N ₇
			1.81	C ₂₈ H ₄₃ ² H ₈ O ₄ N ₇
			-3.74	C ₂₈ H ₄₇ ² H ₆ O ₄ N ₇
			4.59	C ₂₈ H ₄₁ ² H ₉ O ₄ N ₇

Egrestis_HDX #1186 RT: 7.34 AV: 1 NL: 2.39E7
 T: FTMS + p ESI Full ms [100.00-1500.00]



Egrestis_HDX #1186 RT: 7.34 AV: 1 NL: 1.37E5
 T: FTMS + p ESI Full ms [100.00-1500.00]

