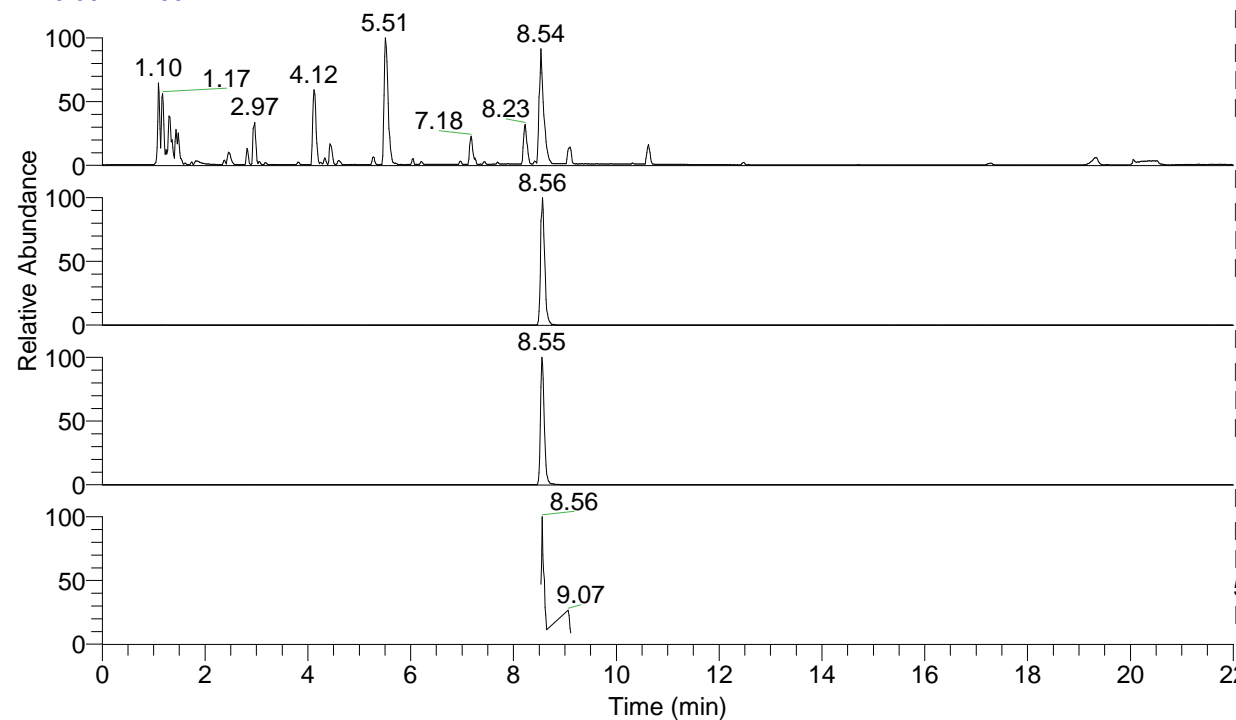


RT: 0.00 - 22.00



NL: 8.71E7  
 Base Peak m/z= 100.00000-1500.00000 F:  
 FTMS + p ESI Full ms [100.00-1500.00]  
 MS Eagrestis

NL: 3.37E6  
 Base Peak m/z= 548.39818-548.40914 F:  
 FTMS + p ESI Full ms [100.00-1500.00]  
 MS Eagrestis

NL: 3.92E6  
 Base Peak m/z= 274.70299-274.70849 F:  
 FTMS + p ESI Full ms [100.00-1500.00]  
 MS Eagrestis

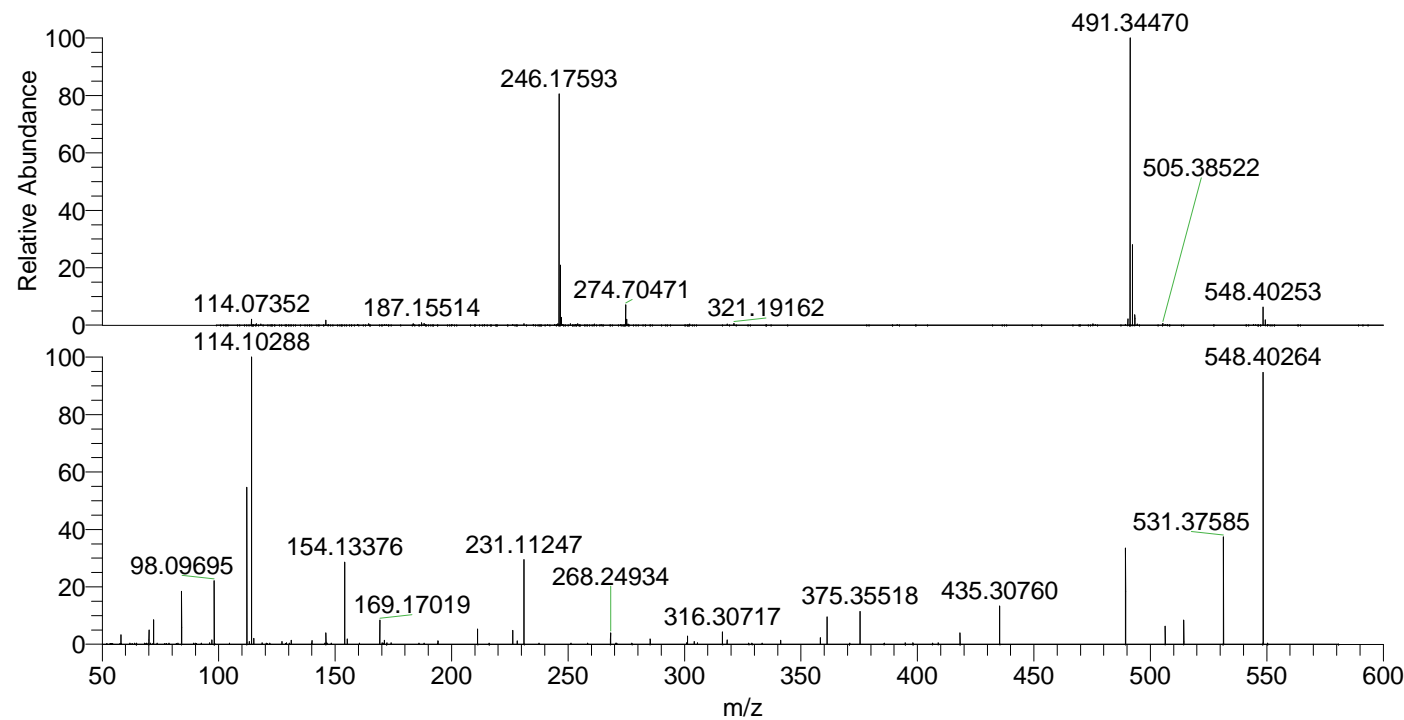
NL: 3.38E5  
 Base Peak m/z= 50.00000-1500.00000 F:  
 FTMS + p ESI d Full ms2  
 548.39@hcd35.00 [50.00-575.00] MS  
 Eagrestis

Eagrestis#3425-3460 RT: 8.53-8.61 AV:

F: FTMS + p ESI d Full ms2 548.39 ...

m/z= 50.00000-1000.00000

m/z	Intensity	Relative
58.06596	5943.6	3.27
70.06586	8979.6	4.94
72.08155	15047.2	8.27
84.08139	33462.1	18.39
97.07666	2710.1	1.49
98.09695	38960.9	21.42
112.11241	96369.4	52.97
113.10776	1590.7	0.87
114.10288	181919.2	100.00
115.12329	3622.2	1.99
127.12311	1734.6	0.95
131.11813	2541.8	1.40
140.11836	2258.0	1.24
146.06009	7032.0	3.87
154.13376	50688.6	27.86
155.15445	3224.1	1.77
169.17019	15166.6	8.34
171.16024	2483.3	1.37
174.05557	997.6	0.55
194.16552	2053.6	1.13
211.19218	9354.7	5.14
226.22771	8583.4	4.72
228.21856	2127.4	1.17
231.11247	52208.8	28.70
268.24934	6940.8	3.82
285.27723	3316.2	1.82
300.88344	928.6	0.51
301.27104	5012.6	2.76
304.16666	1613.9	0.89
316.30717	7652.9	4.21
318.29807	2774.0	1.52
341.30133	2522.5	1.39
358.32814	4013.7	2.21
361.22378	16794.6	9.23
375.35518	20175.6	11.09
418.28141	6904.3	3.80
435.30760	23482.0	12.91
489.35396	59152.1	32.52
506.38083	11144.1	6.13
514.34946	15034.3	8.26
531.37585	65947.3	36.25
548.40264	167081.2	91.84



NL: 5.28E7  
 Eagrestis#3439 RT: 8.56  
 AV: 1 T: FTMS + p ESI  
 Full ms [100.00-1500.00]

NL: 1.76E5  
 Eagrestis#3424-3463 RT:  
 8.53-8.61 AV: 7 F: FTMS  
 + p ESI d Full ms2  
 548.39@hcd35.00  
 [50.00-575.00]