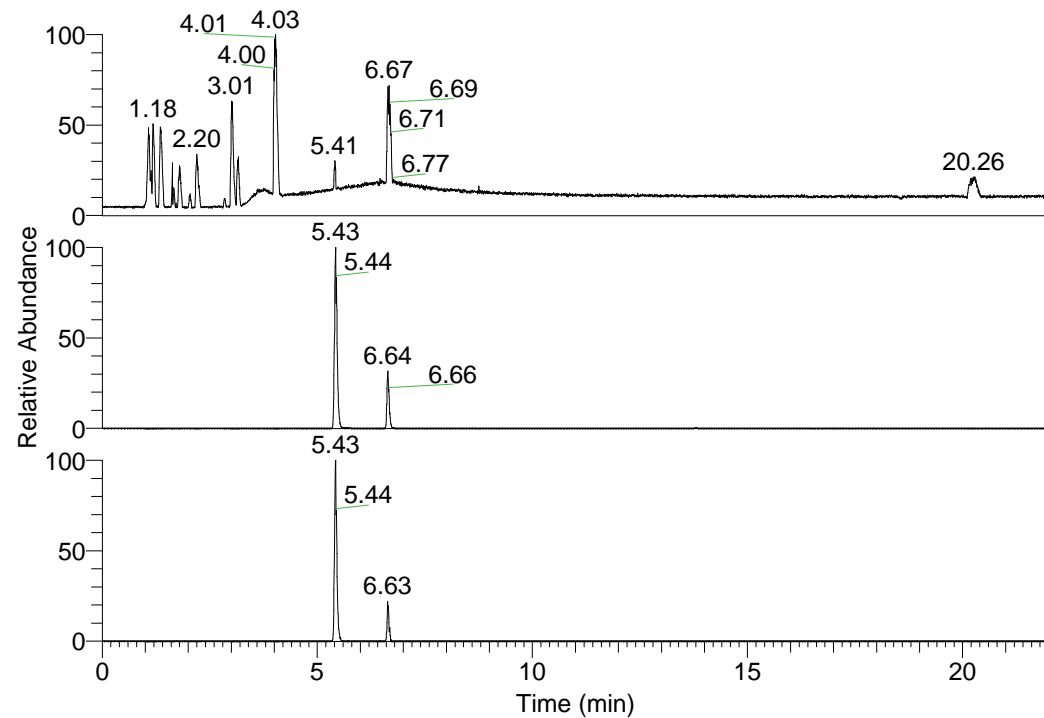


RT: 0.00 - 22.01



NL: 1.58E8
 Base Peak m/z=
 100.00000-1500.00000 F:
 FTMS + p ESI Full ms
 [100.00-1500.00] MS
 Egrestis_HDX

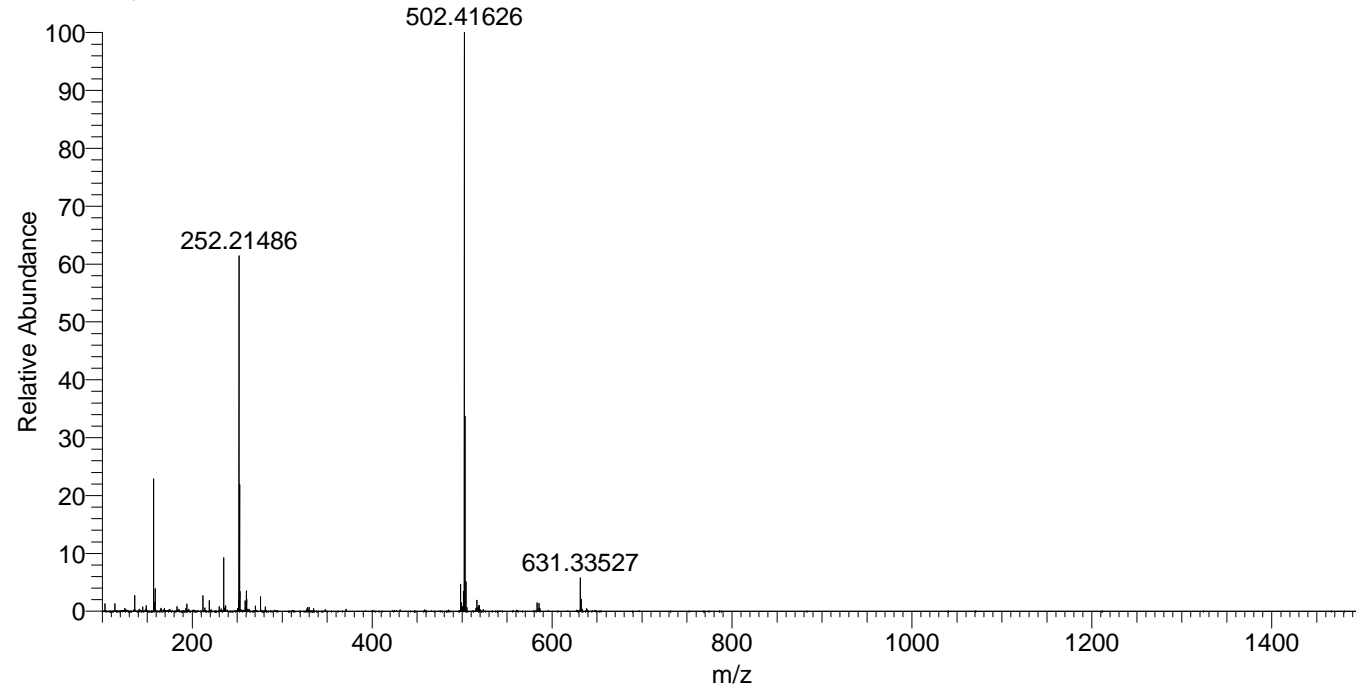
NL: 6.43E6
 Base Peak m/z=
 516.44205-516.44721 F:
 FTMS + p ESI Full ms
 [100.00-1500.00] MS
 Egrestis_HDX

NL: 1.28E6
 Base Peak m/z=
 259.22807-259.23067 F:
 FTMS + p ESI Full ms
 [100.00-1500.00] MS
 Egrestis_HDX

Egrestis_HDX#1069 RT: 6.64
 T: FTMS + p ESI Full ms [100.00-1500.00]
 m/z= 516.00000-517.00000

m/z	Intensity	Relative	Delta (ppm)	Composition
516.44586	2044701.1	100.00	0.45	C ₂₆ H ₄₀ ² H ₉ O ₃ N ₇
			-2.55	C ₂₆ H ₄₂ ² H ₈ O ₃ N ₇
			3.45	C ₂₆ H ₃₈ ² H ₁₀ O ₃ N ₇

Egrestis_HDX #1069 RT: 6.64 AV: 1 NL: 1.05E8
 T: FTMS + p ESI Full ms [100.00-1500.00]



Egrestis_HDX #1069 RT: 6.64 AV: 1 NL: 1.05E8
 T: FTMS + p ESI Full ms [100.00-1500.00]

