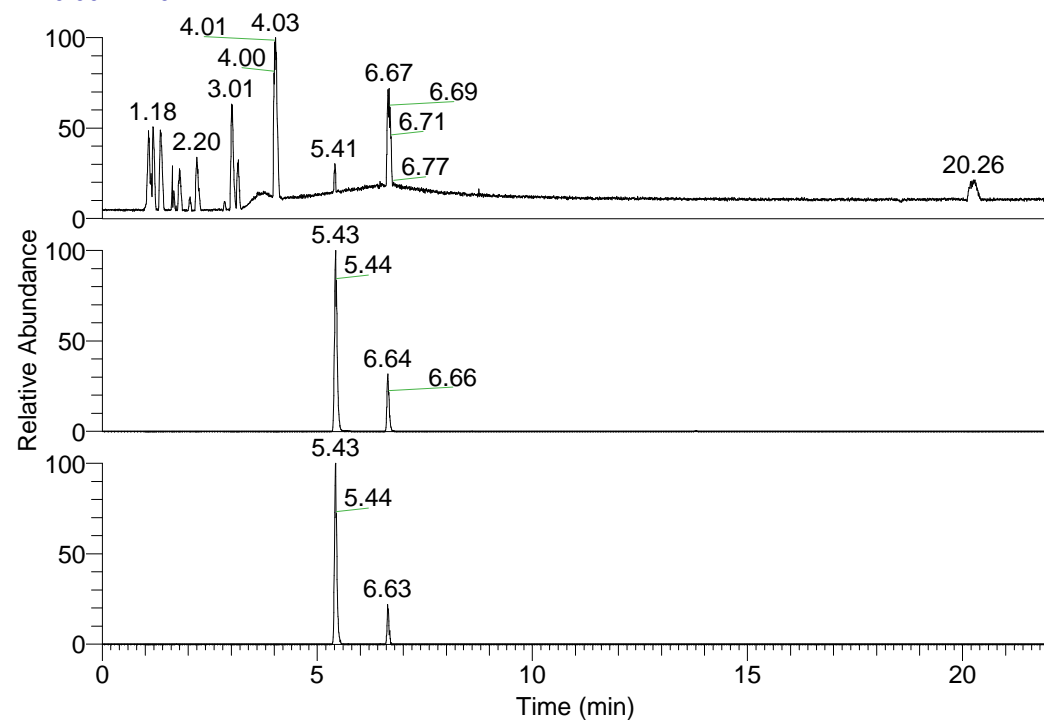


RT: 0.00 - 22.01



NL: 1.58E8
 Base Peak m/z=
 100.00000-1500.00000 F:
 FTMS + p ESI Full ms
 [100.00-1500.00] MS
 Egrestis_HDX

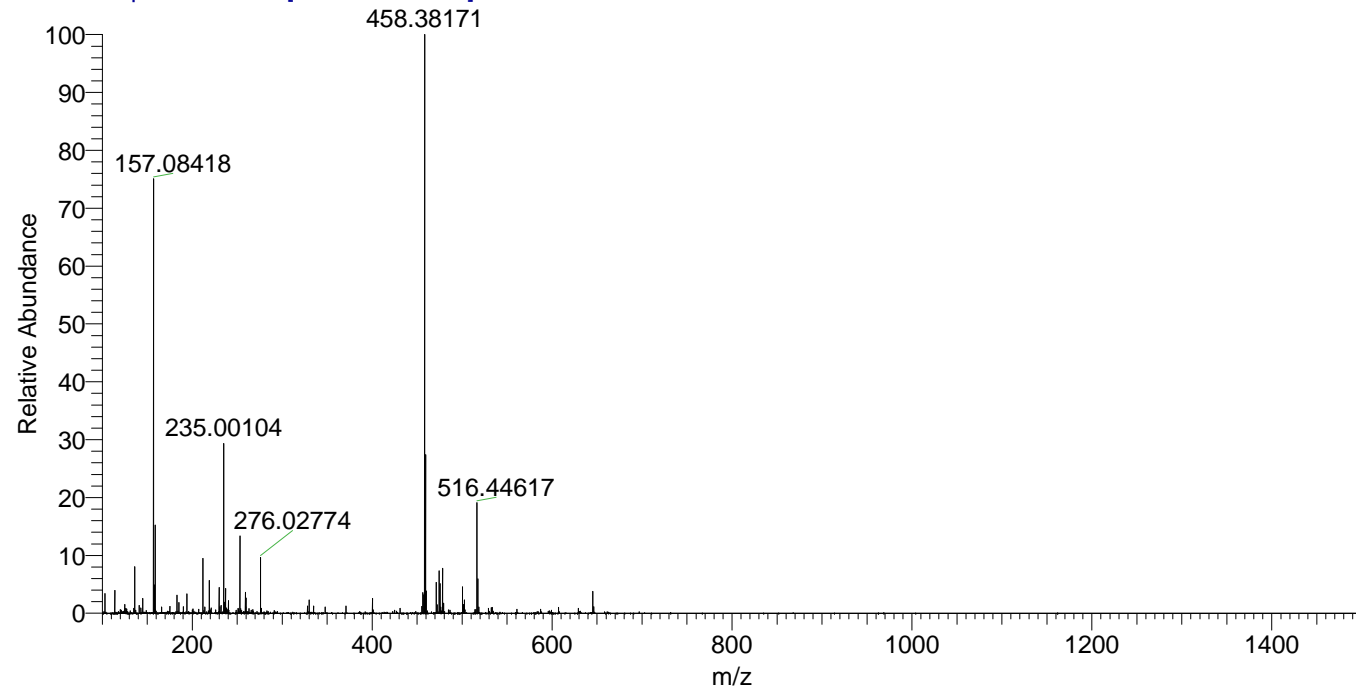
NL: 6.43E6
 Base Peak m/z=
 516.44205-516.44721 F:
 FTMS + p ESI Full ms
 [100.00-1500.00] MS
 Egrestis_HDX

NL: 1.28E6
 Base Peak m/z=
 259.22807-259.23067 F:
 FTMS + p ESI Full ms
 [100.00-1500.00] MS
 Egrestis_HDX

Egrestis_HDX#869 RT: 5.43
 T: FTMS + p ESI Full ms [100.00-1500.00]
 m/z= 516.00000-517.00000

m/z	Intensity	Relative	Delta (ppm)	Composition
516.44617	6102232.0	100.00	1.04	C ₂₆ H ₄₀ ² H ₉ O ₃ N ₇
			-1.96	C ₂₆ H ₄₂ ² H ₈ O ₃ N ₇
			4.04	C ₂₆ H ₃₈ ² H ₁₀ O ₃ N ₇
			-4.96	C ₂₆ H ₄₄ ² H ₇ O ₃ N ₇

Egrestis_HDX #869 RT: 5.43 AV: 1 NL: 3.12E7
 T: FTMS + p ESI Full ms [100.00-1500.00]



Egrestis_HDX #869 RT: 5.43 AV: 1 NL: 5.95E6
 T: FTMS + p ESI Full ms [100.00-1500.00]

