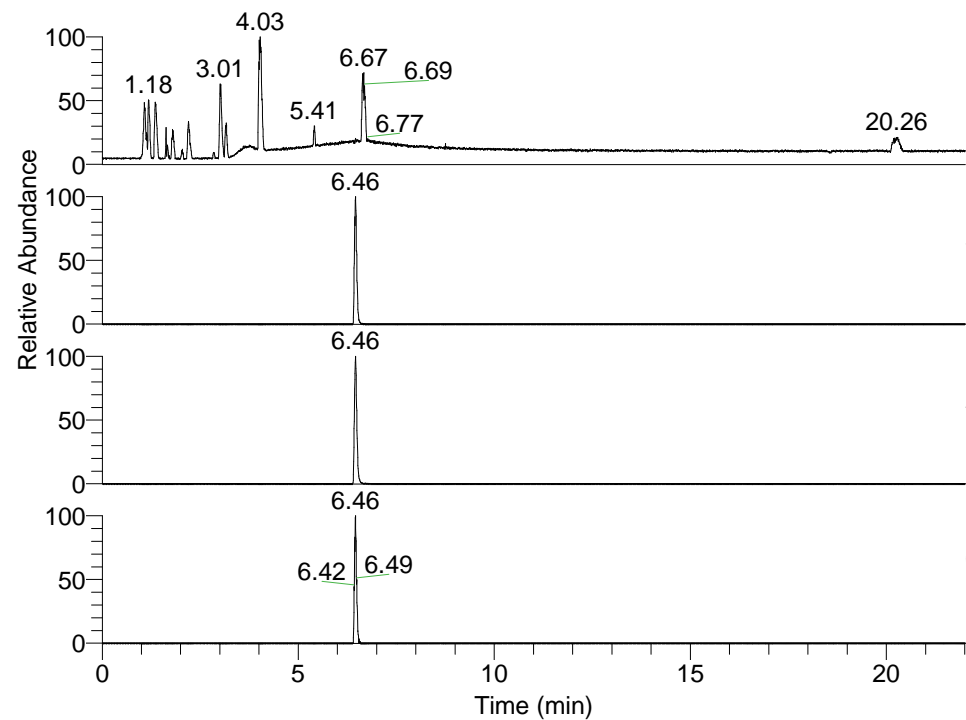


RT: 0.00 - 22.01



NL: 1.58E8
 Base Peak m/z=
 100.00000-1500.00000 F: FTMS + p
 ESI Full ms [100.00-1500.00] MS
 Eagrestis_HDX

NL: 2.26E7
 Base Peak m/z=
 511.42172-511.42684 F: FTMS + p
 ESI Full ms [100.00-1500.00] MS
 Eagrestis_HDX

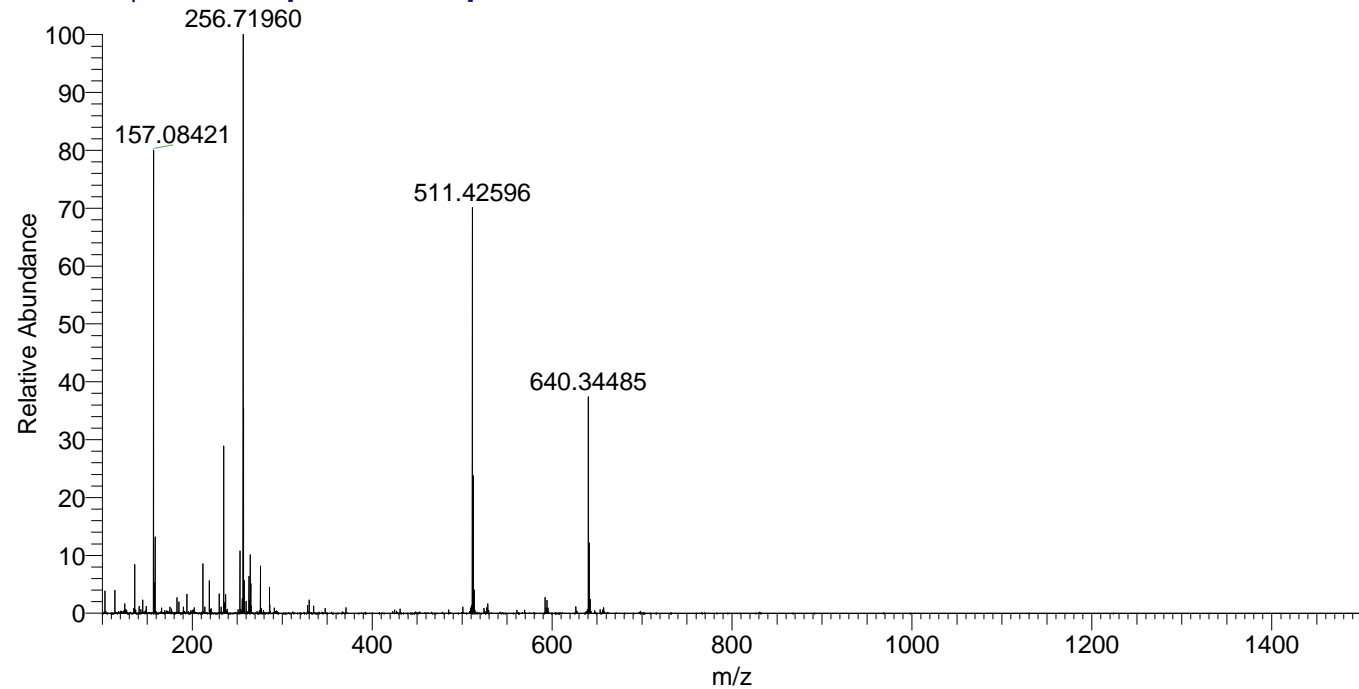
NL: 3.23E7
 Base Peak m/z=
 256.71791-256.72047 F: FTMS + p
 ESI Full ms [100.00-1500.00] MS
 Eagrestis_HDX

NL: 3.66E5
 Base Peak m/z=
 626.42029-626.42655 F: FTMS + p
 ESI Full ms [100.00-1500.00] MS
 Eagrestis_HDX

Eagrestis_HDX#1038 RT: 6.46
 T: FTMS + p ESI Full ms [100.00-1500.00]
 m/z= 511.00000-512.00000

m/z	Intensity	Relative	Delta (ppm)	Composition
511.42596	22603170.0	100.00	1.35	C ₂₇ H ₄₅ ² H ₅ O ₃ N ₆
			-1.68	C ₂₇ H ₄₇ ² H ₄ O ₃ N ₆
			4.38	C ₂₇ H ₄₃ ² H ₆ O ₃ N ₆
			-4.71	C ₂₇ H ₄₉ ² H ₃ O ₃ N ₆

Eagrestis_HDX #1038 RT: 6.46 AV: 1 NL: 3.20E7
 T: FTMS + p ESI Full ms [100.00-1500.00]



Eagrestis_HDX #1038 RT: 6.46 AV: 1 NL: 2.24E7
 T: FTMS + p ESI Full ms [100.00-1500.00]

