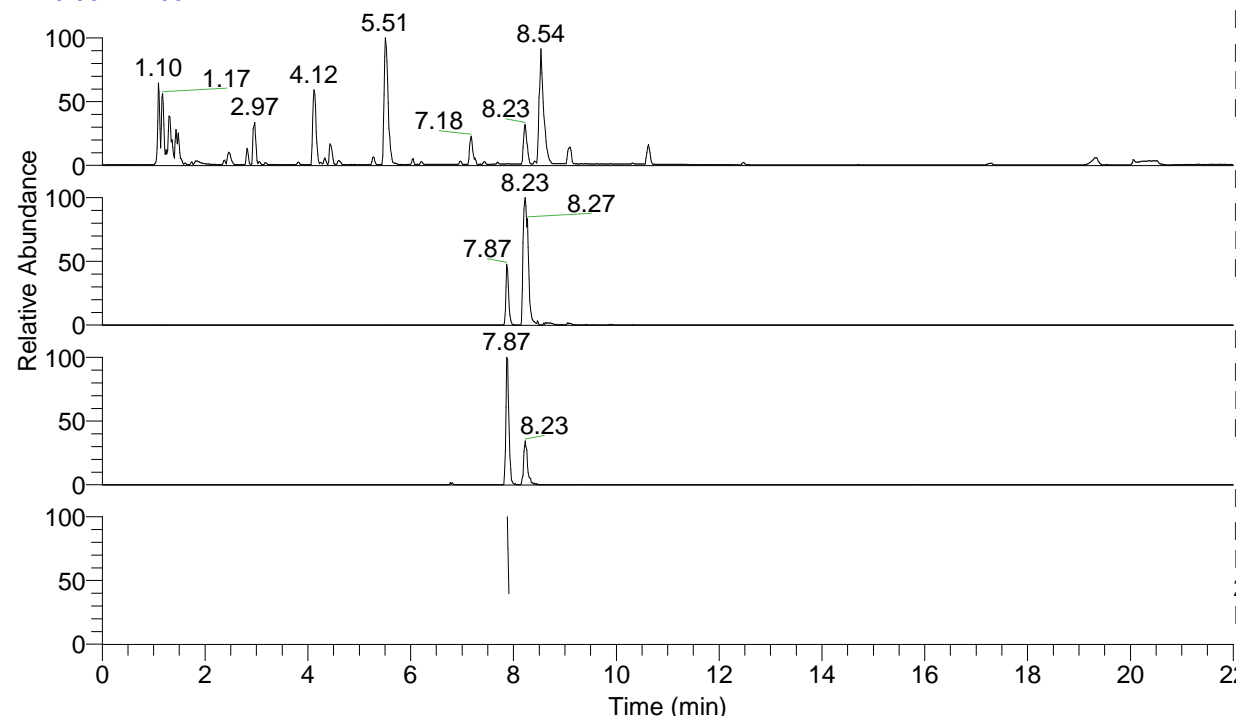


RT: 0.00 - 22.00



NL: 8.71E7
 Base Peak m/z= 100.00000-1500.00000 F:
 FTMS + p ESI Full ms [100.00-1500.00]
 MS Eagrestis

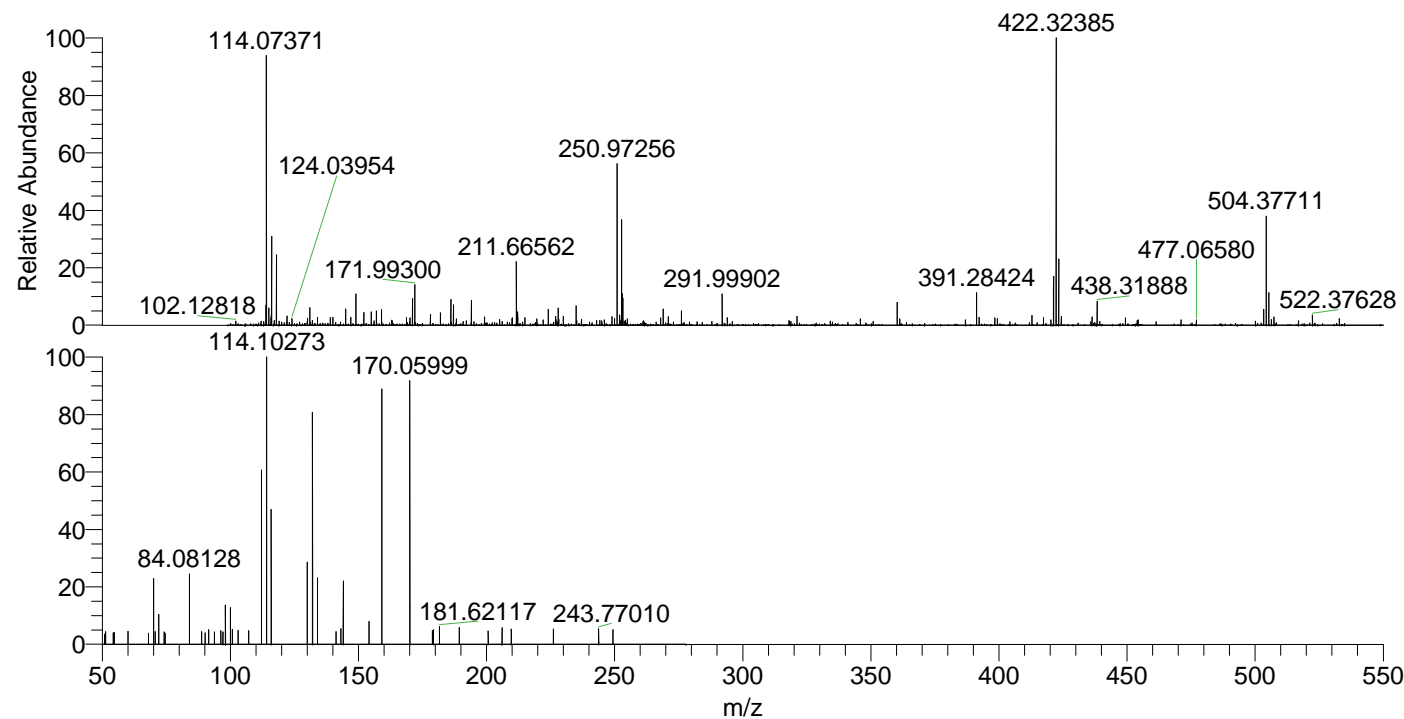
NL: 7.18E5
 Base Peak m/z= 504.37241-504.38249 F:
 FTMS + p ESI Full ms [100.00-1500.00]
 MS Eagrestis

NL: 3.48E5
 Base Peak m/z= 252.69011-252.69517 F:
 FTMS + p ESI Full ms [100.00-1500.00]
 MS Eagrestis

NL: 3.35E4
 Base Peak m/z= 50.00000-1500.00000 F:
 FTMS + p ESI d Full ms2
 252.69@hcd35.00 [50.00-275.00] MS
 Eagrestis

Eagrestis#3161-3174 RT: 7.88-7.91 AV:
 F: FTMS + p ESI d Full ms2 252.69 ...
 m/z= 50.00000-1000.00000

m/z	Intensity	Relative
50.91760	689.0	3.47
51.32555	919.8	4.63
51.32786	709.3	3.57
54.30338	792.9	3.99
54.73275	848.2	4.27
54.74503	794.9	4.00
60.05655	906.2	4.56
67.99628	775.6	3.90
70.06583	4558.3	22.93
70.69908	900.8	4.53
72.08145	2143.1	10.78
74.20047	848.9	4.27
74.50741	773.6	3.89
84.08128	4856.9	24.43
88.83138	889.6	4.47
90.20344	816.5	4.11
91.53873	1040.3	5.23
93.77901	868.9	4.37
96.31419	959.0	4.82
97.10242	867.8	4.37
98.09700	2747.2	13.82
99.98756	2574.2	12.95
100.74348	1026.5	5.16
103.01261	987.8	4.97
107.14274	958.1	4.82
112.11260	12072.0	60.72
114.10273	19880.4	100.00
115.96446	9494.1	47.76
130.06501	5744.8	28.90
132.08072	16276.2	81.87
133.97515	4606.5	23.17
141.26603	880.0	4.43
143.12812	1084.4	5.45
144.08080	4521.6	22.74
154.13396	1593.0	8.01
159.09210	17702.5	89.05
170.05999	18279.8	91.95
178.91919	950.1	4.78
179.29903	1006.8	5.06
181.62117	1233.2	6.20
189.34567	1179.2	5.93
200.66762	921.6	4.64
206.05735	1185.7	5.96
209.66938	1051.7	5.29
226.05759	1047.4	5.27
243.77010	1081.0	5.44
249.30335	1005.6	5.06



NL: 9.04E5
 Eagrestis#3157 RT: 7.87
 AV: 1 T: FTMS + p ESI
 Full ms [100.00-1500.00]

NL: 1.99E4
 Eagrestis#3157-3176 RT:
 7.88-7.91 AV: 3 F: FTMS
 + p ESI d Full ms2
 252.69@hcd35.00
 [50.00-275.00]