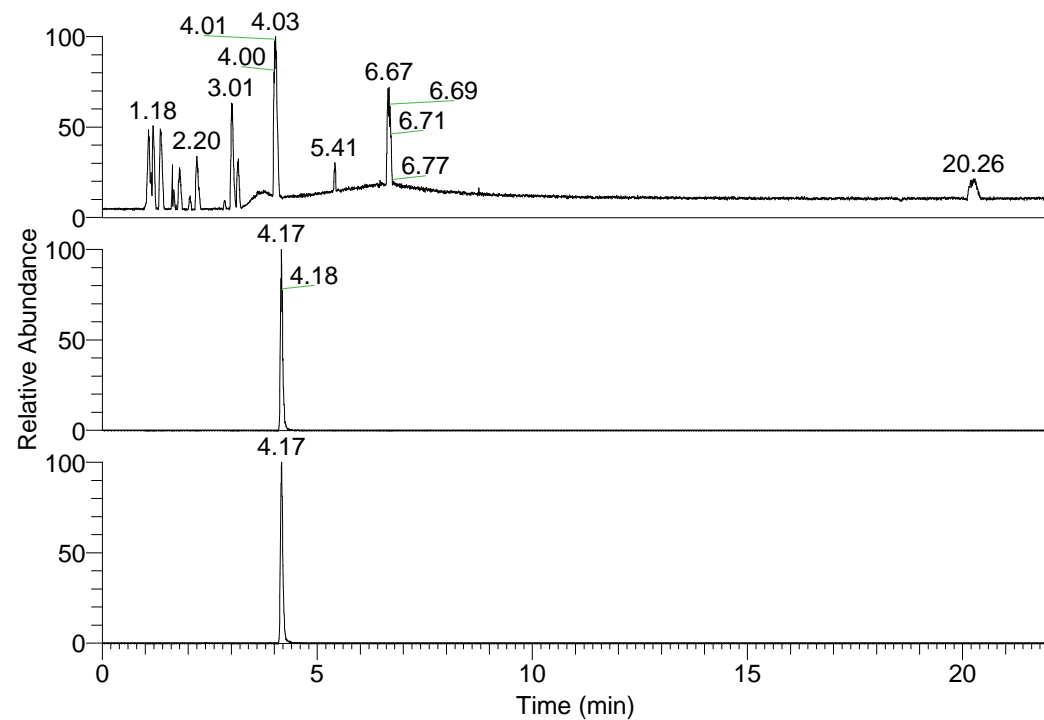


RT: 0.00 - 22.01



NL: 1.58E8  
 Base Peak m/z=  
 100.00000-1500.00000 F:  
 FTMS + p ESI Full ms  
 [100.00-1500.00] MS  
 Eagrestis\_HDX

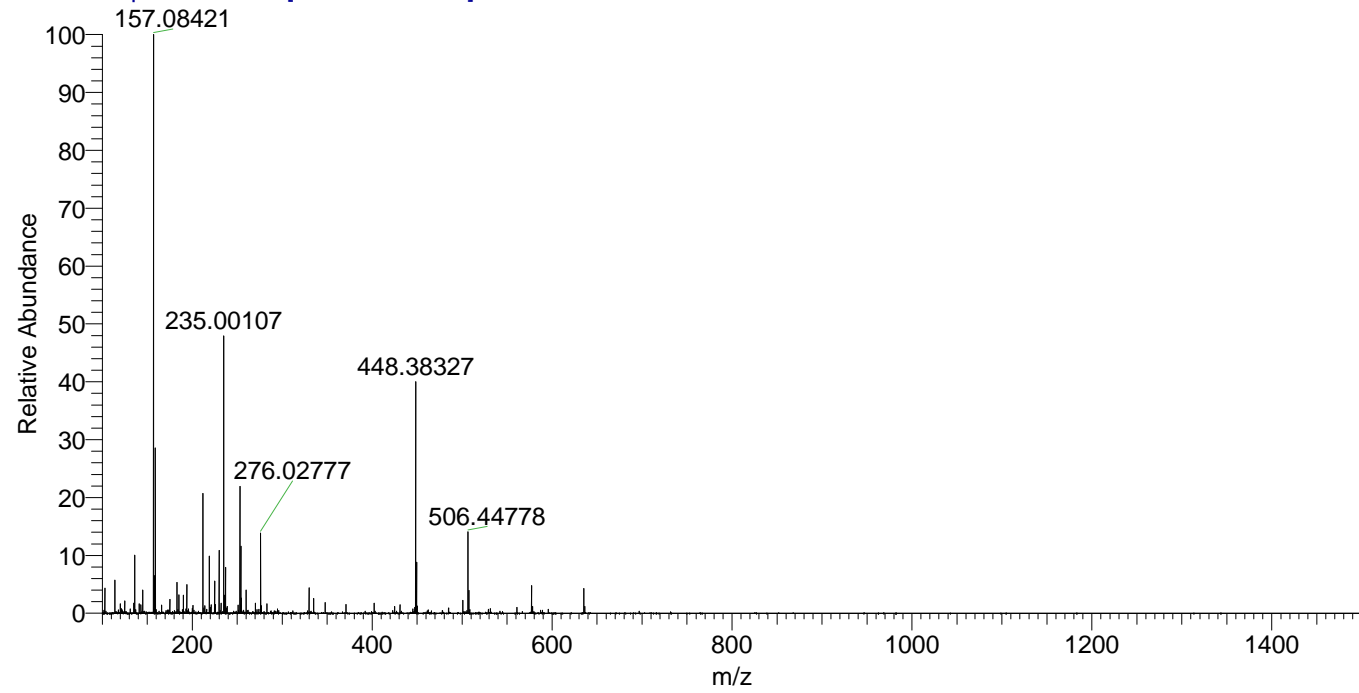
NL: 2.85E6  
 Base Peak m/z=  
 506.44363-506.44869 F:  
 FTMS + p ESI Full ms  
 [100.00-1500.00] MS  
 Eagrestis\_HDX

NL: 2.07E6  
 Base Peak m/z=  
 254.22886-254.23140 F:  
 FTMS + p ESI Full ms  
 [100.00-1500.00] MS  
 Eagrestis\_HDX

Eagrestis\_HDX#665 RT: 4.17  
 T: FTMS + p ESI Full ms [100.00-1500.00]  
 m/z= 506.00000-507.00000

m/z	Intensity	Relative	Delta (ppm)	Composition
506.44778	2599510.0	100.00	1.24	C <sub>24</sub> H <sub>38</sub> <sup>2</sup> H <sub>10</sub> O <sub>3</sub> N <sub>8</sub>
			-1.82	C <sub>24</sub> H <sub>40</sub> <sup>2</sup> H <sub>9</sub> O <sub>3</sub> N <sub>8</sub>
			4.30	C <sub>24</sub> H <sub>36</sub> <sup>2</sup> H <sub>11</sub> O <sub>3</sub> N <sub>8</sub>
			-4.87	C <sub>24</sub> H <sub>42</sub> <sup>2</sup> H <sub>8</sub> O <sub>3</sub> N <sub>8</sub>

Eagrestis\_HDX #665 RT: 4.17 AV: 1 NL: 1.78E7  
 T: FTMS + p ESI Full ms [100.00-1500.00]



Eagrestis\_HDX #665 RT: 4.17 AV: 1 NL: 2.50E6  
 T: FTMS + p ESI Full ms [100.00-1500.00]

