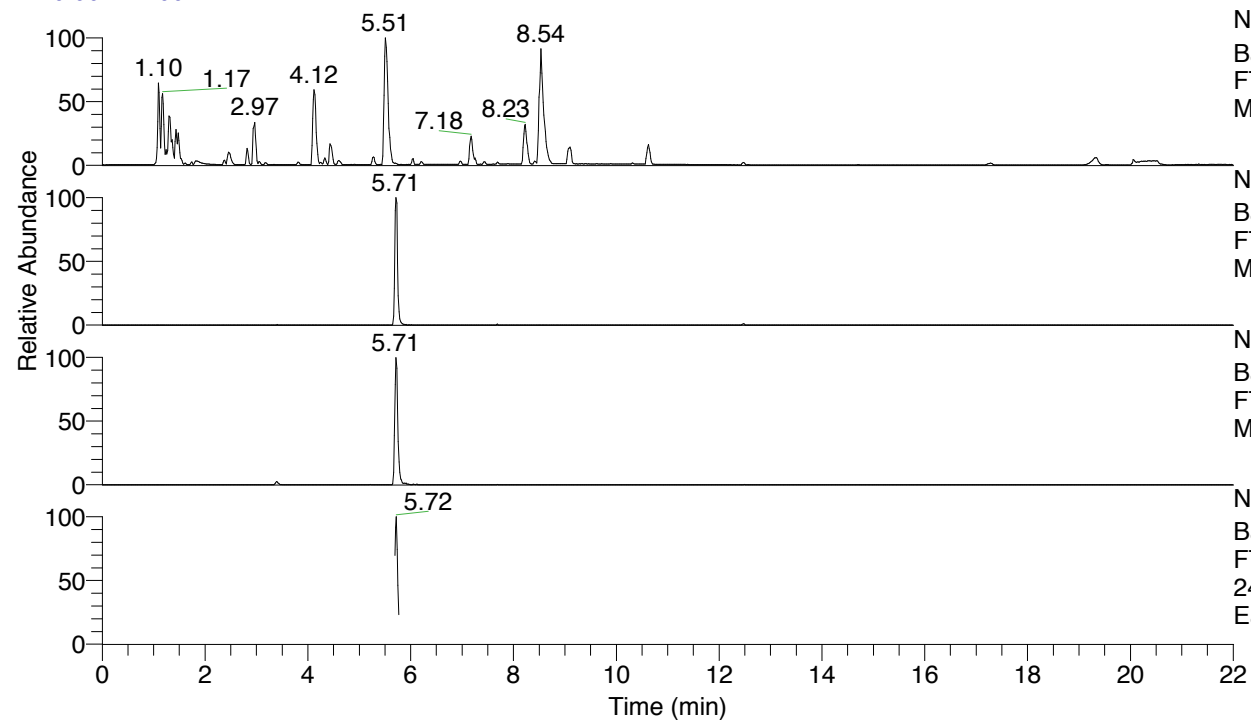


RT: 0.00 - 22.00



NL: 8.71E7
 Base Peak m/z= 100.00000-1500.00000 F:
 FTMS + p ESI Full ms [100.00-1500.00]
 MS Eagrestis

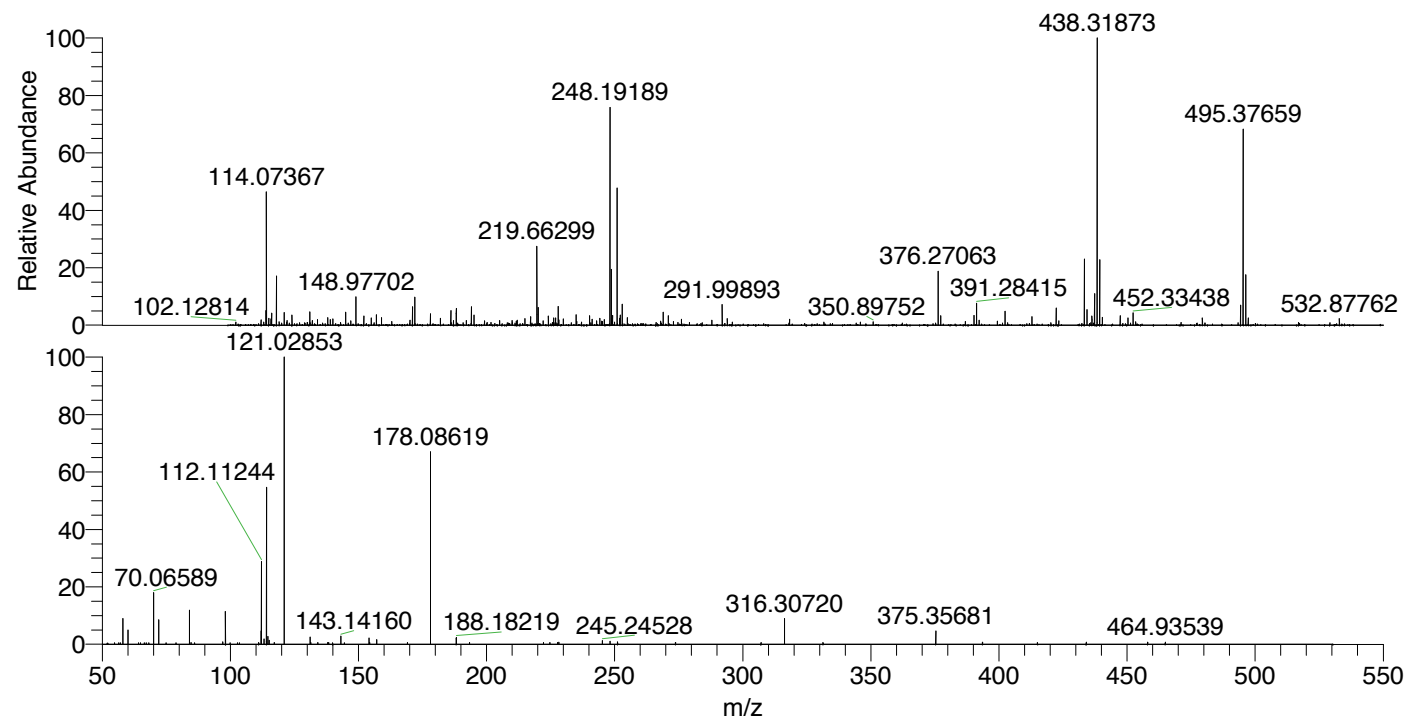
NL: 8.83E5
 Base Peak m/z= 495.37216-495.38206 F:
 FTMS + p ESI Full ms [100.00-1500.00]
 MS Eagrestis

NL: 9.94E5
 Base Peak m/z= 248.18999-248.19495 F:
 FTMS + p ESI Full ms [100.00-1500.00]
 MS Eagrestis

NL: 1.37E5
 Base Peak m/z= 50.00000-1500.00000 F:
 FTMS + p ESI d Full ms2
 248.19@hcd35.00 [50.00-525.00] MS
 Eagrestis

Eagrestis#2292-2313 RT: 5.70-5.75 AV:
 F: FTMS + p ESI d Full ms2 248.19 ...
 m/z= 50.00000-1000.00000

m/z	Intensity	Relative
58.06596	9016.0	9.03
60.05643	4908.0	4.92
64.90781	532.9	0.53
68.23610	532.7	0.53
70.06589	17902.1	17.93
72.08162	8297.6	8.31
84.08154	11992.0	12.01
84.66784	559.4	0.56
86.01816	550.5	0.55
97.07658	826.2	0.83
98.09703	11294.8	11.31
102.76098	530.5	0.53
111.09242	622.1	0.62
112.08735	4657.9	4.67
112.11244	28317.2	28.36
113.10787	1804.2	1.81
114.09165	1029.7	1.03
114.10283	53659.3	53.75
114.61329	2672.1	2.68
115.12346	1376.8	1.38
117.17474	578.6	0.58
121.02853	99831.9	100.00
121.03640	1657.0	1.66
131.11824	2427.8	2.43
131.40207	570.3	0.57
134.11579	624.8	0.63
138.05510	628.8	0.63
138.35362	581.2	0.58
139.95150	551.5	0.55
143.14160	2787.5	2.79
144.50104	541.1	0.54
154.13374	2111.9	2.12
154.37775	571.9	0.57
157.14528	1635.0	1.64
169.16987	635.4	0.64
178.08619	65627.9	65.74
188.18219	2328.0	2.33
193.40434	582.3	0.58
222.26064	600.2	0.60
224.69152	621.3	0.62
227.70888	614.0	0.62
228.21810	679.6	0.68
245.24528	1266.6	1.27
248.19386	1053.8	1.06
251.14164	877.2	0.88
273.76243	611.6	0.61
307.13594	601.1	0.60
316.30720	8739.4	8.75
331.34977	653.2	0.65
375.35681	4478.9	4.49
393.57904	682.9	0.68
415.02496	631.5	0.63
434.09131	707.3	0.71
458.04106	665.1	0.67
464.93539	732.3	0.73



NL: 1.27E6
 Eagrestis#2299 RT: 5.71
 AV: 1 T: FTMS + p ESI
 Full ms [100.00-1500.00]

NL: 9.78E4
 Eagrestis#2289-2318 RT:
 5.70-5.75 AV: 5 F: FTMS
 + p ESI d Full ms2
 248.19@hcd35.00
 [50.00-525.00]

Egrestis#2292-2313 RT: 5.70-5.75 AV: 5

F: FTMS + p ESI d Full ms2 248.19@hcd35.00 [50.00-525.00]

m/z= 50.00000-1000.00000

m/z	Intensity	Relative
56.48400	524.0	0.52
57.02563	518.3	0.52
58.06596	9016.0	9.03
60.05643	4908.0	4.92
64.90781	532.9	0.53
66.41403	519.4	0.52
67.13116	502.7	0.50
68.23610	532.7	0.53
70.06589	17902.1	17.93
72.08162	8297.6	8.31
84.08154	11992.0	12.01
84.66784	559.4	0.56
86.01816	550.5	0.55
97.07658	826.2	0.83
98.09703	11294.8	11.31
99.85647	525.2	0.53
102.76098	530.5	0.53
103.57224	521.3	0.52
111.09242	622.1	0.62
112.08735	4657.9	4.67
112.11244	28317.2	28.36
113.10787	1804.2	1.81
114.09165	1029.7	1.03
114.10283	53659.3	53.75
114.61329	2672.1	2.68
115.12346	1376.8	1.38
117.17474	578.6	0.58
121.02853	99831.9	100.00
121.03640	1657.0	1.66
131.11824	2427.8	2.43
131.40207	570.3	0.57
134.11579	624.8	0.63
138.05510	628.8	0.63
138.35362	581.2	0.58
139.95150	551.5	0.55
143.14160	2787.5	2.79
144.50104	541.1	0.54
154.13374	2111.9	2.12
154.37775	571.9	0.57

Eagrestis#2292-2313 RT: 5.70-5.75 AV: 5

F: FTMS + p ESI d Full ms2 248.19@hcd35.00 [50.00-525.00]

m/z= 50.00000-1000.00000

m/z	Intensity	Relative
157.14528	1635.0	1.64
169.16987	635.4	0.64
178.08619	65627.9	65.74
188.18219	2328.0	2.33
193.40434	582.3	0.58
222.26064	600.2	0.60
224.69152	621.3	0.62
227.70888	614.0	0.62
228.21810	679.6	0.68
245.24528	1266.6	1.27
248.19386	1053.8	1.06
251.14164	877.2	0.88
273.76243	611.6	0.61
307.13594	601.1	0.60
316.30720	8739.4	8.75
331.34977	653.2	0.65
375.35681	4478.9	4.49
393.57904	682.9	0.68
415.02496	631.5	0.63
434.09131	707.3	0.71
458.04106	665.1	0.67
464.93539	732.3	0.73