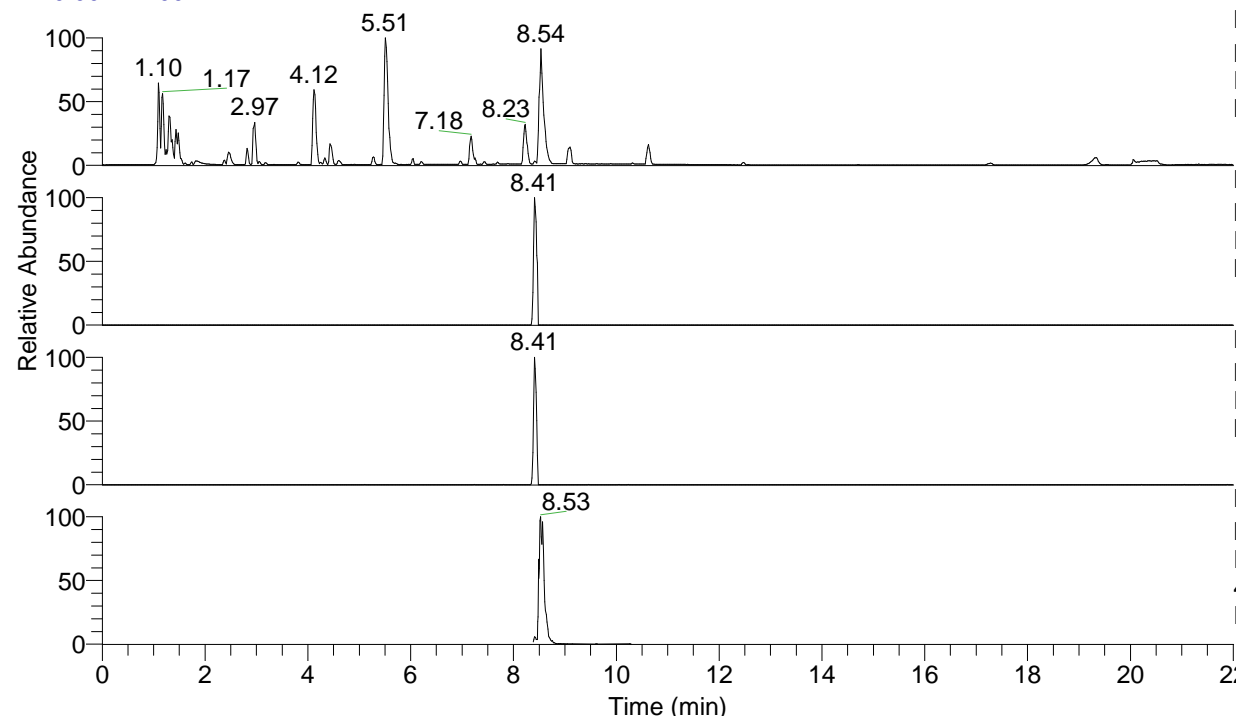


RT: 0.00 - 22.00



NL: 8.71E7  
 Base Peak m/z= 100.00000-1500.00000 F:  
 FTMS + p ESI Full ms [100.00-1500.00]  
 MS Eagrestis

NL: 2.89E6  
 Base Peak m/z= 491.36605-491.37587 F:  
 FTMS + p ESI Full ms [100.00-1500.00]  
 MS Eagrestis

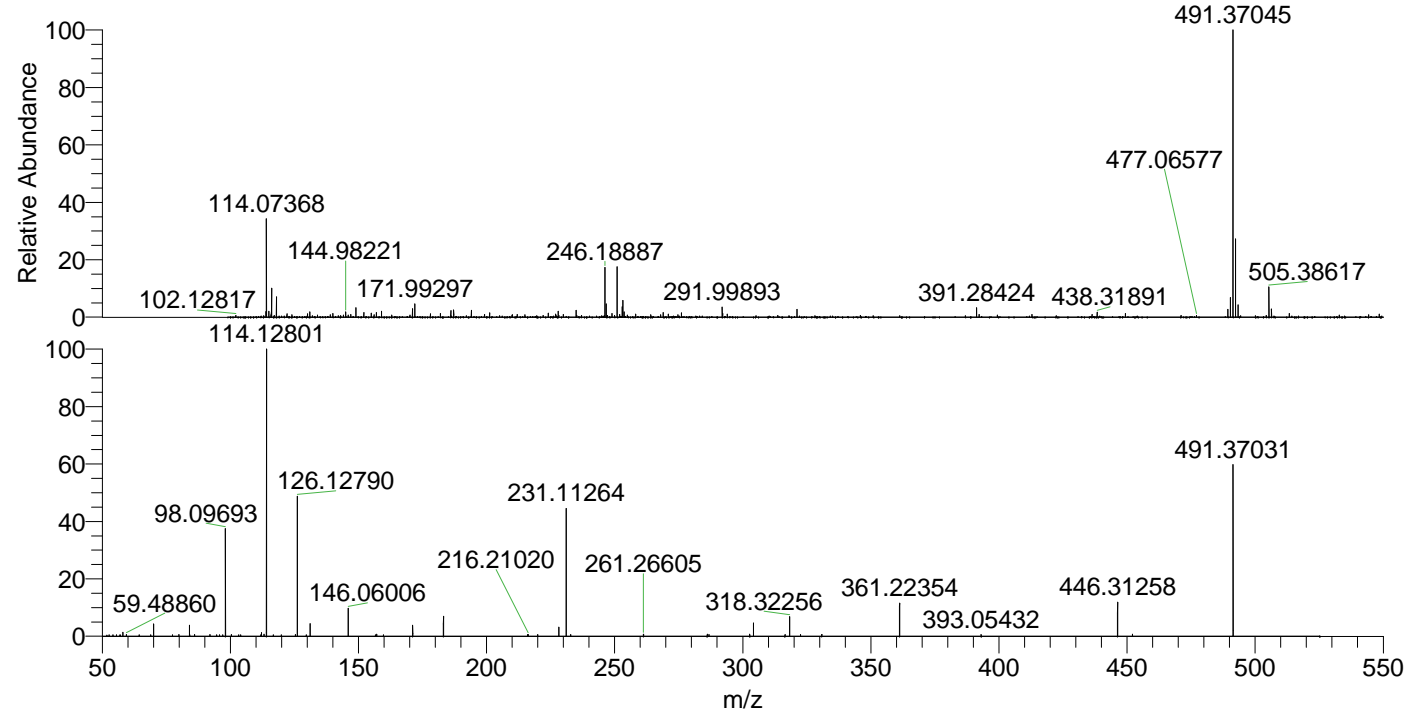
NL: 5.19E5  
 Base Peak m/z= 246.18693-246.19185 F:  
 FTMS + p ESI Full ms [100.00-1500.00]  
 MS Eagrestis

NL: 6.85E6  
 Base Peak m/z= 50.00000-1500.00000 F:  
 FTMS + p ESI d Full ms2  
 491.33@hcd35.00 [50.00-520.00] MS  
 Eagrestis

Eagrestis#3364-3374 RT: 8.39-8.41 AV:

F: FTMS + p ESI d Full ms2 491.33 ...  
 m/z= 50.00000-1000.00000

m/z	Intensity	Relative
52.64728	1317.3	0.52
54.18820	1299.0	0.52
58.06584	3480.9	1.38
59.48860	1611.7	0.64
68.95833	1323.6	0.53
70.06583	11019.5	4.38
77.46631	1283.9	0.51
79.97614	1579.4	0.63
84.08148	9925.8	3.95
84.19644	1353.7	0.54
86.09693	1714.6	0.68
92.02655	1688.3	0.67
94.66685	1345.2	0.53
95.73377	1318.0	0.52
97.08880	1354.8	0.54
98.09693	94993.3	37.76
100.44670	1422.4	0.57
103.22931	1316.4	0.52
104.05754	1370.5	0.54
111.85667	1287.1	0.51
112.11250	3191.4	1.27
113.10874	1716.3	0.68
114.09173	3530.2	1.40
114.12801	251603.2	100.00
116.79920	1308.0	0.52
119.87633	1358.4	0.54
125.42913	1530.6	0.61
126.12790	125699.6	49.96
129.68580	1333.5	0.53
131.11796	11205.8	4.45
146.06006	24597.7	9.78
156.58640	1408.3	0.56
157.17052	1820.5	0.72
159.79574	1371.0	0.54
171.18517	9682.2	3.85
183.18573	17978.5	7.15
216.10386	1474.1	0.59
216.21020	1709.5	0.68
219.96460	1478.1	0.59
228.24368	8193.5	3.26
231.11264	112151.6	44.57
232.82368	1453.2	0.58
261.26605	1794.9	0.71
286.15427	1912.4	0.76
286.84916	1528.6	0.61
302.73078	1764.8	0.70
304.16515	11814.7	4.70
316.51688	1650.3	0.66
318.32256	17320.9	6.88
322.57262	1623.1	0.65
330.85778	1648.3	0.66
361.22354	29395.1	11.68
393.05432	1632.4	0.65
446.31258	30446.8	12.10
452.11677	1754.8	0.70
491.37031	152073.2	60.44



NL: 2.85E6  
 Eagrestis#3373 RT: 8.41  
 AV: 1 T: FTMS + p ESI  
 Full ms [100.00-1500.00]

NL: 2.52E5  
 Eagrestis#3364-3379 RT:  
 8.39-8.41 AV: 3 F: FTMS  
 + p ESI d Full ms2  
 491.33@hcd35.00  
 [50.00-520.00]