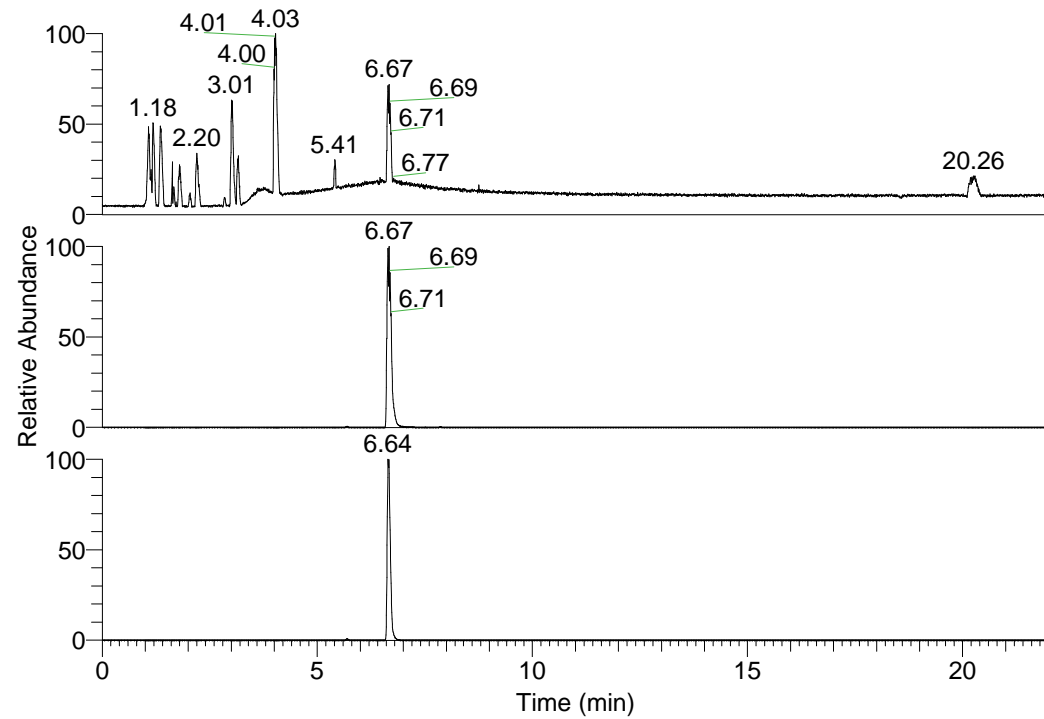


RT: 0.00 - 22.01



NL: 1.58E8
Base Peak m/z=
100.00000-1500.00000 F:
FTMS + p ESI Full ms
[100.00-1500.00] MS
Egrestis_HDX

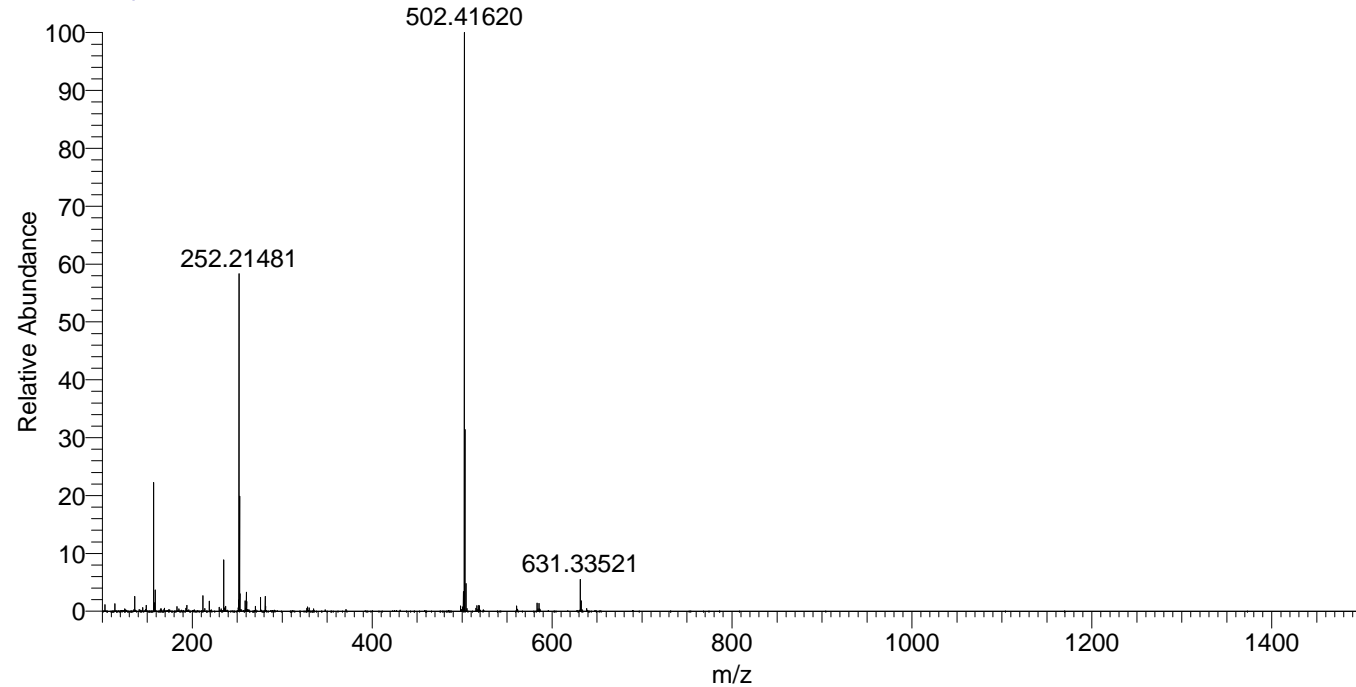
Egrestis_HDX#1075 RT: 6.67
T: FTMS + p ESI Full ms [100.00-1500.00]
m/z= 502.00000-503.00000

m/z	Intensity	Relative	Delta (ppm)	Composition
502.41620	113739336.0	100.00	0.68	C ₂₄ H ₃₄ ² H ₁₀ O ₃ N ₈
			-2.40	C ₂₄ H ₃₆ ² H ₉ O ₃ N ₈
			3.76	C ₂₄ H ₃₂ ² H ₁₁ O ₃ N ₈

NL: 1.14E8
Base Peak m/z=
502.41235-502.41737 F:
FTMS + p ESI Full ms
[100.00-1500.00] MS
Egrestis_HDX

NL: 7.34E7
Base Peak m/z=
252.21322-252.21574 F:
FTMS + p ESI Full ms
[100.00-1500.00] MS
Egrestis_HDX

Egrestis_HDX #1075 RT: 6.67 AV: 1 NL: 1.12E8
T: FTMS + p ESI Full ms [100.00-1500.00]



Egrestis_HDX #1075 RT: 6.67 AV: 1 NL: 1.12E8
T: FTMS + p ESI Full ms [100.00-1500.00]

